



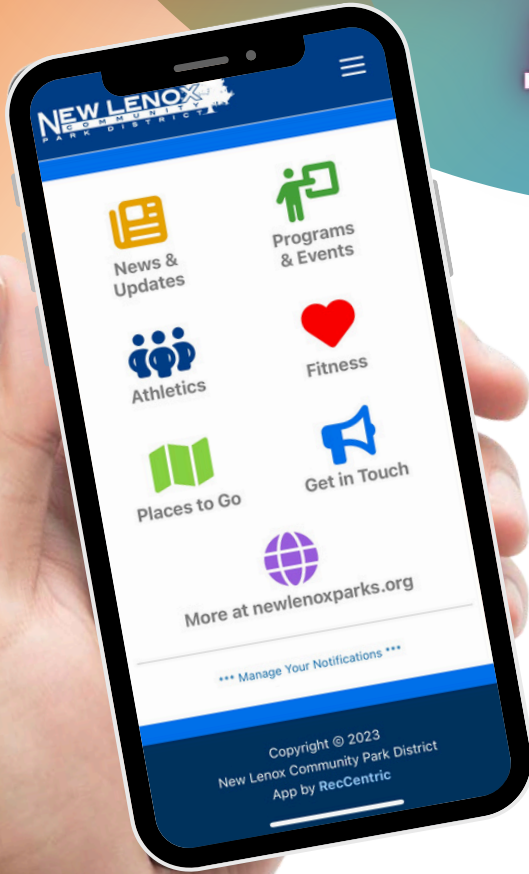
newlenoxparks.org

FALL 2024 PROGRAM GUIDE

***Registration Begins
Monday, August 5***



Download Our New App!



Introducing our mobile app, designed for effortless program and event registration. Explore all we have to offer with ease!



Scan the QR code on your mobile device.



On the bottom of your screen, click the  icon.



Scroll down to locate the "Add to Home Screen" option, then tap "Add"



In the top right corner of your screen, click



or



Tap "Install" twice

SCAN ME



You can now close your device's browser and access the app at any time from the Home Screen!



Apple



Android

GREETINGS FROM YOUR NEW LENOX COMMUNITY PARK DISTRICT!

As the summer season comes to a close for the Park District, I am thrilled by the momentum we have built. Exciting things are on the horizon as we transition into fall.

The fall season will feature youth sports leagues including soccer and basketball, providing a great opportunity for kids to learn new skills and foster teamwork in a supportive environment. Don't miss out on family fun at the Big Bad Pumpkin Party, the Halloweenie Roast, and our Noon Year's Eve Party!

Additionally, the Friends of the Parks Foundation will host their Empty Bowls event at the Village of New Lenox's Last Call Before Fall on September 21, supporting the New Lenox Township Food Pantry. They will also organize their annual Meta-Mucil 50+ Golf Outing on October 15. For more details and registration, visit their website at nlfop.square.site.

Explore unique bus trips this fall, including Oktoberfest with the Die Kellerknaben Polka Band, The Full Monty at Paramount Theaters, Autumn on the River, the Christkindlmarket Aurora, and a trip to Newport, Rhode Island. Experience these adventures with us!

The Sanctuary Golf Course was bustling this summer, with our new driving range attracting golfers of all levels and outings keeping the staff busy. Visit The Sanctuary website for fall driving range and tee time availability.

At the New Lenox Community Park District, we are dedicated to providing exceptional recreational and educational opportunities for all residents. Whether you're looking to stay fit, explore new hobbies, or simply connect with neighbors, we have something for you this fall.

Remember...try a new program, attend a new event and be active in your community!

Sincerely,

Ted Schulz
Park Board President

OUR MISSION

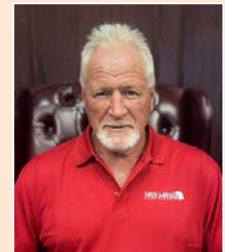
is to provide safe recreational opportunities through diverse programs, facilities and open space, with the overall goal being improvement of the quality of life in our community.



Ted Schulz, President



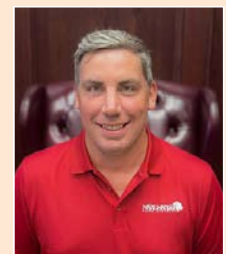
Brian Fischer, Vice President



Dale Larson, Secretary



Garry Kraemer, Treasurer



Mark Ott Jr., Commissioner

PARK BOARD MEETINGS

OPEN TO PUBLIC

Anyone wishing to address the Park Board must notify the Board in writing by noon on the Friday before the regular meeting. Meetings will be held at 6:00pm on the third Wednesday of the month at the Village of New Lenox (1 Veterans Parkway) in the Board Room - 2nd Floor.

PARK DISTRICT FACILITIES & STAFF

OUR MISSION

is to provide safe recreational opportunities through diverse programs, facilities and open space, with the overall goal being improvement of the quality of life in our community.



NLCPD ADMINISTRATION BUILDING

701 W. HAVEN AVENUE, NEW LENOX, IL 60451

PH: (815) 485-3584 • FAX: (815) 485-3589

****Registration available at this location only.**

HOURS OF OPERATION:

Monday-Friday, 8:30am-4:30pm

Executive Services

Greg Lewis, CPRP, Executive Director

Business Services Staff

Kathy Lynch, Director of Business Services

- Jason Braglia, CPRP, Deputy Director of Business Services
- Nicole Saltzman, Deputy Director of Business Services
- Janine White, Business Services Generalist

Parks & Maintenance Staff

Ken Stephens, Director of Parks Maintenance

- Gary Wilde, CPSI, Parks Maintenance Assistant Director
- Shaun Elder, Parks Maintenance Supervisor
- Dylan Tobias, Parks Maintenance Laborer
- Owen Sigrist, Parks Maintenance Laborer
- Larry Hensley, Parks Maintenance Laborer
- Nick Bojan, Parks Maintenance Laborer
- Mike Tarrant, Parks Maintenance Laborer

Recreation Staff

Lea Pipiras, CPRP, Director of Recreation

- Olga Viano, CPRP, Deputy Director of Recreation
- Kelly Matson, Recreation Supervisor
- Amy Maher, Marketing/Public Relations Supervisor
- Dominic Cooper, Recreation Supervisor
- Bethany Lerch, CPRP, Recreation Supervisor
- Brooke Krol, Recreation Supervisor
- Missy McGrath, Guest Services Supervisor
- Christina Studlow, Recreation Supervisor
- Caitlin Eichhorn, Marketing and PR Coordinator
- Aurora Abbott, Office Coordinator
- John Camp, Facilities Maintenance Supervisor
- Jeff Franson, Custodial Maintenance Supervisor
- Deborah Barks, Custodial Maintenance Laborer
- Paul Pandow, Custodial Maintenance Laborer



LIONS COMMUNITY CENTER

1 MANOR DRIVE, NEW LENOX, IL 60451 (Not a Mailing Address)

PH: (815) 485-3584 • FAX: (815) 485-5952

THE SANCTUARY GOLF COURSE

485 N. MARLEY ROAD, NEW LENOX, IL 60451 (Not a Mailing Address)

golfsanctuary.com

PH: (815) 462-4653 • FAX: (815) 462-4659

HOURS OF OPERATION:

Open Daily (weather permitting)

Robert Schulz, PGA, Director of Golf

- Ethan Bedsaul, PGA, Golf Course Assistant Director
- Ben McAdams, PGA, Golf Course Assistant Manager
- Bill McInerney, PGA, Golf Course Assistant Professional
- Michael Ledvina, Golf Course Food and Beverage Supervisor
- Madelyn Burdelik, Golf Course Food and Beverage Manager
- Douglas Eggert, GCSAA, Golf Course Superintendent
- Michael Wesolowski, Golf Course Assistant Director



Fall 2024

Please check Lincoln-Way
Community High School website
for Team Asset information at
lw210.org/page/asset



CREATE A CLASS

The Park District is looking for local hidden talent to instruct or lead various recreational classes. Do you like to set your own work schedule? Do you have a background in fitness, early childhood, craft design or any other special ability? If so, join our staff and contribute to "Quality Community Life" in New Lenox. We are always looking for new instructors with creative ideas. If you have a particular skill or are willing to lead activities, please call (815) 485-3584.

Commemorative Tree and Bench Program

Are you looking for a special way to honor a loved one or to commemorate a special event? The New Lenox Community Park District's Commemorative Tree and Bench Program is dedicated to planting a tree or placing a bench in honor of a loved one, organization or to celebrate your special occasion. There are a variety of trees that can be purchased and planted. Please keep in mind that trees may be purchased at any time but are only planted in the spring and fall and benches will be installed weather permitting. Please note that these trees and/or benches may be placed within a park site or at our Sanctuary Golf Course, but restrictions do apply. Each commemorative donation will be designated with a plaque honoring your request. For further information, please call (815) 485-3584.

Reminder to Pet Owners

When visiting local parks with your pet, please remember that the Park District and Village ordinances require dogs to be leashed at all times. Owners are responsible for cleaning up any animal excrement from public property.

What is the S.T.O.P. PROGRAM?

S.T.O.P. stands for Stop Trashing Our Parks and is represented by our mascot, Bucky the Beaver. Bucky's mission is to keep our parks safe and free of vandalism. To help support Bucky's mission, cash rewards will be paid for information leading to the apprehension of park vandals (individuals providing information are not required to identify themselves). Hopefully, kids of all ages can relate to our friendly mascot and his mission.



Find us on Facebook, X,
Instagram & YouTube.



TABLE OF CONTENTS

Information Categories

T.E.A.M. Asset of the Month	4
Athletic Associations	10
Community News You Can Use	11
Commemorative Bench/Tree Program	5
Lincolnway Special Recreation Association	15
Mission Statement	4
New Lenox Fire Protection District	10
New Lenox Friends of the Parks	10

ONLINE REGISTRATION 8

Park Board	3
Park District Staff	4
Park District News	5
Park Map/Amenities	43-44
Park Partners	10
Park Policies	6
Park Shelter Rentals/Trail Guide	42
Parties and Rentals	40-41
President's Letter	3
Program Requirements	6

REGISTRATION INFORMATION & FORM 7-9

Sanctuary Golf Course	12
"STOP" Trashing Our Parks Program	5

Programs Offered

ACES	14
Adult Athletics	16-17
Adult Programs	20-21
Bus Trips	22-23
Children's Athletics	27-32
Children's Programs	24-26
Dance	37
Fitness	19
Gymnastics/Cheerleading	36
Kiddie Kampus	33-35
Special Events	38-39
Spencer Trailblazers	13

PROGRAM REQUIREMENTS

- Children must be the correct age by 9/1/24, unless otherwise specified. In order to provide your child with the best possible recreational and/or learning experience, all our programs are planned according to the ages listed in our Program Guide.
- Children must meet the age requirements of a class. The Recreation Department reserves the right to request a birth certificate if the age of the child is in question. If a child is not the appropriate age for a class, he/she will be dropped from the program.
- Classes are for the registered child only, except for classes with an adult. Parents will drop child off at the designated location, you will not be able to remain in the classroom, gymnasium or the Lions Community Center. This is in the child's best interest, as continual interruptions tend to affect participants' attention span and inhibit the establishment of peer relationships.
- All children must be potty-trained unless they are attending a class where an adult stays with them or is otherwise stated in the class description. Diapers are not permitted in independent classes unless stated in the class description.
- Please do not bring food to any class unless previously arranged.
- For your child's safety, all children enrolled in programs must be picked up from the specific classroom or program site by their parent(s) or designated guardian. No child will be released from the classroom to anyone other than individuals from the pick-up list.
- A mandatory sign-in and sign-out procedure for all participants is required for all Park District Programs. Children must be accompanied by an adult when escorted to and from class.

REFUND POLICY

No refunds are given: (1) once a program begins unless a replacement is found; (2) on material fees unless we cancel a program; (3) on bus trips; or (4) for special events or one-day programs. A full refund is issued if we cancel a program or trip.

- When a participant cancels out of a program, a full refund, less a \$5 service charge (per program), will be granted. A \$5 service charge will also be assessed on all program transfers.
- These requests will only be honored if the request is submitted three business days prior to the start of the program or activity.
- All refunds less than \$10 will be applied as a credit to the customer's account.
- Every effort will be made to process refunds within 30 days, but in some instances it may take longer.
- New Lenox Community Park District reserves the right to change program details at any time.

CANCELLATIONS

Staff reserves the right to consolidate, postpone, reschedule, or cancel any program due to changes in day, dates, times, instructor or insufficient enrollment. If program enrollment does not meet the minimum number of registrants, we try to cancel the program seven days prior to the start date or by the registration deadline.

For cancellations due to unforeseen circumstances (i.e., inclement weather, facility emergencies or scheduling conflicts), which are announced by Lincoln-Way District 210 or New Lenox School District 122 at facilities where Park District programs are scheduled, Park District programming will be cancelled as well. All attempts will be made to reschedule cancelled classes. However, the New Lenox Community Park District is sometimes unable to accommodate make-up classes and will not refund money in such instances.

PROGRAM BEHAVIOR POLICY

Participants are expected to exhibit appropriate behavior. The following guidelines have been developed to help make Park District programs safe and enjoyable for all participants. Additional rules may be developed for programs and athletic leagues as deemed necessary by staff.

- Show respect to participants and staff and take direction from staff.
- Refrain from using abusive or foul language or from causing bodily harm to self, other participants or staff.
- Show respect to equipment, supplies and facilities. The New Lenox Community Park District reserves the right to terminate a party's participation in a Park District program due to that party's disruptive behavior or conduct.

PROGRAM GUIDE DISTRIBUTION

To provide you the most up-to-date information, the Program Guides will be available online only at newlenoxparks.org. We continue to review guidelines to determine the best way to safely serve the community while fulfilling our mission of providing quality community life.

PHOTO DISCLAIMER

Registrants and participants permit to the taking of photos and videos of themselves and their children during Park District activities for publication and use as the Park District deems necessary.

LIABILITY

The New Lenox Community Park District is unable to assume responsibility for injuries, accidents or loss of personal property occurring during programs or activities, in parks or facilities. Such insurance would make programs and user fees prohibitive.

PROGRAM INFORMATION ICONS

Throughout the Program Guide, you will recognize icons adjacent to programs. These icons are to assist you with additional information.

- Programs that require a parent and child to attend are shown with this icon:



- The Park District runs programs for the community through a partnership with different businesses. They provide knowledgeable and background-checked instructors who will direct each program. Programs that are contracted are shown with this icon:



- Please note that for selected ticketed or special events as well as some ongoing programs, online registration is not available. Programs that do not allow online registration are shown with this icon:



AMERICAN DISABILITIES ACT (ADA)

A request for ADA modifications or assistance at a program is required at the time of registration. Please mark the ADA box on the Registration Form and call our Administration Building at (815) 485-3584. Early registration, along with a request for accommodation, is strongly suggested to assure that appropriate modifications are secured prior to the start of the program. We recommend at least four weeks' notice to have modifications in place.



Find us on Facebook, X, Instagram & YouTube.



REGISTRATION POLICIES

- A government issued birth certificate is required for all participants two (2) years and younger before registration will be accepted.
- Parents/guardians may register for immediate family members only. Each adult must sign the Registration Form.
- Phone-in registrations are not accepted.
- If there is a problem with your registration, we will contact you by phone or email. If we cannot reach you, the Registration Form will be returned by mail and your place in the program cannot be saved. Be sure to include a valid daytime phone number and e-mail on all Registration Forms.
- Registration is not complete until a printed confirmation or email receipt has been issued.
- The New Lenox Community Park District is not responsible for lost or late mail or faxes.
- All Registration Forms must be signed. Those without signatures will be returned to the sender, thereby jeopardizing registration and program placement.
- A \$25 service charge will be assessed on all rejected credit card payments for families utilizing our installment billing system and \$30 service charge on all returned checks.
- The New Lenox Community Park District reserves the right to suspend participation in activities of customers whose account is in "bad standing" until all fees are paid. Failure to pay may result in collection costs added to outstanding balances.

RESIDENT REGISTRATION (R)

Resident Registration and Online Registration will begin on Monday, August 5, at 8:30am at the Administration Building, 701 W. Haven Avenue.

Registration Forms are accepted as soon as our Program Guide is posted on our website, but will not be processed until Monday, August 5, at 8:30am. Early submission of registration does not guarantee enrollment in a program.

NONRESIDENT REGISTRATION (NR)

Nonresident participants can register for New Lenox Community Park District programs beginning Monday, August 12. Additional fees for nonresidents may apply. We do not charge a nonresident fee for special events or bus trips.

*See our Adult Athletics
on pages 16-17.*

REGISTRATION INFO

FIRST-TIME REGISTRATION

When registering for the first time, residents will need to provide proof of residency by showing proper documentation. Those documents include:

One Item from Category 1

- Most recent property tax bill
- Most recent mortgage statement (we do not accept mortgage coupon payment books)
- Signed and dated lease or letter from manager (on letterhead) and proof of last month's payment
- Mortgage closing statement (if you have moved in the last 30 days)

Two Items from Category 2

- Valid Illinois Driver's License or State I.D. Card
- Most recent gas, electric and/or water bill
- Most recent cable television bill, credit card bill and/or bank statement
- Voter Registration
- Vehicle Registration
- Current Public Aid Card

Nonresidents will need to provide a valid Driver's License or State I.D. Card at the time of registration.

PAYMENT

- Full payment must be paid to the New Lenox Community Park District at time of registration
- Cash, credit/debit cards or checks are acceptable forms of payment
- Checks should be made payable to New Lenox Community Park District or NLCPD
- We do not accept payments over the phone

SCHOLARSHIP PROGRAM

If you are a New Lenox resident and cannot participate for financial reasons, you may be eligible for financial aid. Please e-mail completed Financial Aid Application and supporting documentation to Olga Viano at oviano@newlenoxparks.org. Forms are located on our website under district information. All required documentation must be submitted with the completed application two weeks prior to the start of the program. Please note that the maximum household scholarship benefit is \$1,000 per year.

MILITARY DISCOUNT

We are pleased to offer a military discount for those who qualify. A Military Master Form must be filled out completely prior to receiving the military discount. For more information, please visit newlenoxparks.org/registration/.

In-District/Out-of-District Residents

- 50% Active-Duty Discounts – Discount applies to family members who reside in the same household.
- 25% for Veteran Discounts – Discount applies to family members who reside in the same household.

SIMPLE WAYS TO REGISTER

Online

- Begins Monday, August 5, at 8:30am for residents and Monday, August 12, at 8:30am for nonresidents
- Go to newlenoxparks.org and click on Online Registration
- Residents and nonresidents may create their own online account by clicking on "Need an Account?" However, residents who have NOT established residency will be charged nonresident fees (if applicable) for Park District programs until residency has been established. Nonresident fees are non-refundable. Review "First Time Registration" to see how to establish residency.

Mail-In/Drop-Off

- Place the completed and signed Registration Form with your payment in a sealed envelope and mail to:
- New Lenox Community Park District,
701 W. Haven Avenue, New Lenox, IL 60451
- One Item from Category 1 (New Families)
- Two Items from Category 2 (New Families)
- Or place in the Drop Box outside:
 - Administration Building, 701 W. Haven Avenue
- Mail-In/Drop-Off Registration is accepted as soon as our Program Guide is posted on our website and will be retained until registration begins on Monday, August 5, at 8:30am and Monday, August 12, at 8:30am for nonresidents.

Email

- Email your completed and signed Registration Form with credit card information to geninfo@newlenoxparks.org
- Email Registration is accepted as soon as our Program Guide is posted on our website and will be retained until registration begins on Monday, August 5, at 8:30am and Monday, August 12, at 8:30am for nonresidents.

Fax-In

- Fax your completed and signed Registration Form with
- completed credit card information to (815) 485-3589
- Fax-In Registration is accepted as soon as our Program Guide is posted on our website and will be retained until registration begins on Monday, August 5, at 8:30am and Monday, August 12, at 8:30am for nonresidents.

Walk-In

- Register in person at the Administration Building, 701 W. Haven Avenue during regular business hours beginning on Monday, August 5, at 8:30am for residents and Monday, August 12, for nonresidents.

*See our Special Events
on pages 38-39.*



REGISTRATION FORM

Under the Americans with Disabilities Act, if you need any accommodations to participate in an activity, please indicate: Yes No

**Please indicate for whom below.*

Household Information

Primary Number: _____ Cell Phone: _____
Last Name: _____ Work Phone: _____
Home Address: _____ Emergency Contact: _____
City: _____ State: _____ Zip Code: _____ Emergency Contact Relation: _____
Email: _____ Emergency Phone: _____

Participant's Name	ACTV#	Program Name	Birth Date	Grade	M/F	Fee	Allergies or ADA Requested*

FOR OFFICE USE ONLY: INITIALS: _____ DATE: _____ TYPE: _____

First and Last Name of Five Adults that will be picking up your child(ren) from our Program. You must include parent/guardian

names: 1. _____

2. _____

3. _____

4. _____

5. _____

YOU MUST SIGN AND DATE WAIVER TO PARTICIPATE IN PARK DISTRICT PROGRAMS.

Please read carefully and be aware that in registering yourself or your minor child/ward for participation in the program(s), you will be waiving and releasing all claims for injuries you or your child/ward might sustain arising out of the program(s).

I recognize and acknowledge that there are certain risks of physical injury to participants in the program(s) and I agree to assume the full risk of any such injuries, damages or loss regardless of severity, which my child/ward or I may sustain as a result of participating in any activities connected or associated with any such program(s). I waive and relinquish all claims I or my child/ward may have against the New Lenox Community Park District and its officers, agents, servants, and employees, and any other cooperative Park District and its officers, agents, servants and employees as a result of participation or the participation of my child/ward any of the program(s) and cooperative programs with other park districts. I further agree to indemnify and hold harmless and defend the Park District(s) and its officers, agents, servants and employees from any and all claims resulting from injuries, damages and loss sustained by me or by my child/ward, arising out of, connected with, or in any way associated with the activities of any of the program(s). I have read and fully understand the program details and waiver and release claims.

Mandatory Signature of Participant, Parent, or Legal Guardian

Date

Please mark payment type: <input type="checkbox"/> CASH <input type="checkbox"/> CHECK <input type="checkbox"/> VISA <input type="checkbox"/> MASTERCARD <input type="checkbox"/> DISCOVER <input type="checkbox"/> AMERICAN EXPRESS	Billing Address Zip Code: _____ Account Number: _____ Expiration Date: ____/____ Security Code: ____ Cardholder Name: _____ Billing Address: _____ Address City/State Amount of Charge: \$ _____ Authorized Signature: _____ (The NLCPD reserves the right to change a payment to reflect the correct fee.)	Check or Money Order Payable To: New Lenox Community Park District "NLCPD" Mail To: New Lenox Community Park District 701 W. Haven Avenue New Lenox, IL 60451 E-mail To: geninfo@newlenoxparks.org Upon Receipt of Your Catalog: Mail, Fax(815.485.3589), E-mail or Drop Off Your Registration.
---	---	--

PARK PARTNERS

The New Lenox Community Park District is pleased to provide contact information for many of the organizations with whom we partner with. It is through the Park District's successful partnerships with these groups that we all contribute to improving the quality of life in the community of New Lenox.

AREA AGENCIES

Lincoln-Way Community High School District 210	(815) 462-2345
New Lenox Chamber of Commerce	(815) 485-4241
New Lenox Cub Scout Packs 6, 49, 94	(815) 942-4450
New Lenox Girl Scouts	(815) 723-3449
New Lenox Community Channel 6	(815) 462-6428
New Lenox Township (Dial A Ride)	(815) 485-6431
New Lenox Fire Protection District (Administration)	(815) 463-4500
New Lenox Library	(815) 485-2605
New Lenox Police (Administration & Non-Emergency)	(815) 462-6100
New Lenox School District 122.	(815) 485-2169
Senior Services Center of Will County	(815) 723-9713
Village of New Lenox	(815) 462-6400

SCHOOL DISTRICTS AND NEW LENOX TOWNSHIP

The New Lenox Community Park District would like to extend a thank you to the school districts serving the area (122 and 210) and New Lenox Township. It is through the cooperation of the school board and administrative staff of these districts that we can offer more programs in satellite locations to members of the community. Thank you for allowing our programs to grow and enhance our community!

NEW LENOX YOUTH ATHLETIC ASSOCIATIONS

The Park District maintains the athletic fields; independent athletic associations run these programs. Registration is handled through each individual association and NOT the Park District. Listed below is the contact information provided to us from our Athletic Associations.

NL Soccer Association/Legacy Soccer Club

newlenoxsoccer.org

NL Girls Softball

nlgsa.org

NL Rebels Baseball

newlenoxrebels.com

NL Mustangs Football

newlenoxfootball.com

NLYFA Jr. Knights/Jr. Warriors Football

nlyfa.com

2024 CPR CLASSES

New Lenox Fire Protection District

Please check the fire district's website at nlfire.com for monthly class dates and times. NLFPD is an authorized American Heart Association (AHA) Training Center providing courses in Adult CPR, Child CPR, Infant CPR, for Healthcare Providers and the laypersons.



All classes are at New Lenox Fire Station 1, 261 E. Maple Street, and begin at 8:30am unless otherwise noted on the website. Registration is required to attend.

For more information and to register, visit nlfire.com.

The Fire District conducts several other public events throughout the year. For information, contact the Fire and Life Safety Educator at (815) 463-4500 for dates and details.

JOIN NOW

New Lenox Friends of the Parks members needed!



Create ~ Promote ~ Develop ~ Maintain ~ Improve
New Lenox Community Park District

For more information contact
newlenoxfriendsofthepark@gmail.com
779.803.3246

A Matter of Balance



This program can help seniors improve their quality of life and remain independent. Participants learn to set realistic goals to increase activity, change their environment to reduce fall risk factors and learn simple exercises to increase strength and balance. Please call Daniel Martin, Safe Community Coordinator, for further information at (815) 462-6493 or via email at dmartin@newlenox.net.

Triad Meetings

The Manhattan-New Lenox TRIAD for Older Adults would like to invite older adults (age 50 and up) from the area to attend their monthly meeting. A major purpose of TRIAD is to develop, expand and implement effective crime prevention and health and safety educational programs for seniors in our community. TRIAD works to improve the quality of life for older adults by providing an opportunity for the exchange of information between public safety (police & fire), social services and seniors. There is no registration or membership needed to attend this or any of the TRIAD meetings. These meetings are for all older adults in and around our community. Please join us!

Day	Date	Time	Topic
TH	9/26	1:30-2:30pm	Falls Prevention
TH	10/24	1:30-2:30pm	Medicare Update
TH	11/21	1:30-2:30pm	Winter & Car Safety
TH	12/12	1:30-2:30pm	Triad Holiday Party

Location: Will County Sherriff Office
16911 W. Laraway Rd, Joliet IL.

If you have any questions, please contact:

- Marisa Schrieber, New Lenox Fire, (815) 463-4527
- Officer Kristine Kioltyka, New Lenox Police, (815) 462-6145

Friends Over 50 1340 WJOL

Friends Over 50 with Ed & Michelle Kerfin is a talk show dedicated to topics affecting everyone including financial, healthcare and lifestyle issues. This talk show is fun and informative and will always make you laugh. You never know who you will meet on the show. Tune in Fridays from 10:00am-1:00pm.

Need a Ride to One of our Programs?

Call the Transportation Service at the New Lenox Township at (815) 485-6431 for safe, affordable, and on-time rides for all New Lenox residents. Please visit newlenox.org/transportation-service for rates.



Find us on Facebook, X, Instagram & YouTube.

New Lenox Public Library Homebound Service

Adult

The Homebound Library Delivery Service at the New Lenox Library provides free library services to individuals who are residents within our district boundaries, have a current New Lenox Library card and are unable to physically come to the library. Delivery or pick up is available to individuals unable to come to the library due to mobility, health or disability barriers. Whether you are at home, in assisted living or in a nursing facility, you are eligible. For further information, please call the New Lenox Public Library Homebound Coordinator at (815) 485-2605, Ext. 134.



Donate used Cell Phones to "Cells for Seniors"

The cell phones are free to seniors and can only be used to access 911 in case of an emergency. Drop off your used cell phones at these New Lenox locations:

- Administration Building, 701 W. Haven Avenue
- New Lenox Township, 1100 S Cedar Road
- New Lenox Police Department, 200 Veterans Parkway

"ONE FALL CAN CHANGE IT ALL" HEALTHY AGING FAIR



A Falls Prevention Awareness Event Free Hot Breakfast ~ Door Prizes!

Wednesday, September 18
8:30 AM- 11:00 AM

VFW Post 9545
323 Old Hickory Road
New Lenox



For more information, contact:
Dan Martin,
New Lenox Safe Community Coordinator
815-462-6493

safe
COMMUNITIES
AMERICA
NEW LENOX, IL

Lions Vision and Hearing
Screening Bus ON SITE

Blood Pressure Checks

Balance Screening

Local Services for Seniors

Free Vaccines provided by
Osco Pharmacy

Entertainment!



485 N. Marley Road
New Lenox, IL 60451

Call (815) 462-GOLF (4653)
Fax (815) 462-4659

Visit golfsanctuary.com for current rates, events, junior and adult golf classes, and private lessons.



Leagues



Adult Classes
Jr Classes

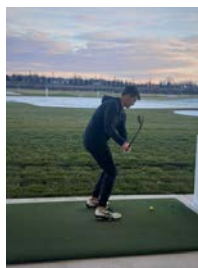


Private
Lessons



Events

Come out and enjoy our **Toptracer Driving Range** featuring individual practice and multi-player games - including virtual golf. All in the comfort of our covered and heated hitting bays.



SPENCER TRAILBLAZERS

Grade K (2024-2025 School Year)

Spencer Trailblazers is an extended childcare program held in the blue neighborhood at Spencer Trail for AM and PM Kindergarten students. Our staff strives to foster growth academically, socially, and emotionally. Children will enjoy structured activities, games, outdoor play and a variety of arts and crafts. A snack will be provided but children should still bring a lunch and drink with them each day. Parents must commit to a set schedule for 3, 4 or 5 days a week. The Automatic Payment Plan is required for this program. Participants will be billed weekly on Wednesdays. There will be a \$50 service/late fee charged if your card declines. Our Spencer ACES program is available if your child needs care before/after Kindergarten/Trailblazers.

ePACT for Trailblazers

All families are required to use ePACT. ePACT information must be completed prior to the first day participant attends program. ePACT is a secure emergency network that we will use to collect medical and emergency contact information electronically. Not only will ePACT replace paper forms, but it will also ensure we have a way to communicate with you.

NUMBER OF DAYS	5	4	3
Morning Trailblazers (PM K Students) 8:25am-12:20pm	\$100	\$84	\$67
Afternoon Trailblazers (AM K Students) 10:55am-3:00pm	\$100	\$84	\$67

Online or In Person Registration is currently open with limited space remaining.

Online Registration

- Check that your account is set to resident status. If not, contact our office 815-485-3584 for further details.
- Ensure your child's grade is listed (0.5), as your child must be attending Spencer Trail Kindergarten to attend the program.



BEYOND THE BELL

Grades K-6th

LCC (Room 1) Entry C

School's off! Join us for an action-packed, fun-filled day. We will provide age-appropriate activities including organized games, arts and crafts, field trips and much more. We have divided the day to offer additional options for working parents who may not need the full 12-hour care.

- Before Care: 6:30-9:00am, a light breakfast will be provided.
- Beyond the Bell: 9:00am-3:30pm, Please bring a lunch with their name on it.
- After Care: 3:30-6:30pm, a snack and drink will be provided.

If the participant is not currently enrolled in ACES or Trailblazers, they will be required to pay a one-time nonrefundable registration fee of \$35.

Payment is due by Tuesday of the previous week or a \$25 late fee per child will be added after the registration deadlines. Late registration will be taken until the previous Thursday at Noon. No registration at the program is allowed. For more information, call the Park District at (815) 485-3584.

November

Day	Date	Registration Deadline
TU	11/5	Tuesday, 10/29
M-W	11/25-11/27	Tuesday, 11/19

December

Day	Date	Registration Deadline
M,TH,F	12/23, 12/26-12/27	Tuesday, 12/17
M	12/30	Tuesday, 12/24

January

Day	Date	Registration Deadline
TH-F	1/2- 1/3	Tuesday, 12/24
M	1/6	Tuesday, 12/31
M	1/20	Tuesday, 1/14

Beyond the Bell	Times	5 days	4 days	3 days	2 days	1 day
1st Child	9:00am-3:30pm	\$163	\$143	\$115	\$82	\$60
2nd Child	9:00am-3:30pm	\$153	\$134	\$108	\$77	\$56
Add'l Out of District Fee	9:00am-3:30pm	\$25	\$22	\$18	\$13	\$9
Before Care	Times	5 days	4 days	3 days	2 days	1 day
1st Child	6:30-9:00am	\$67	\$56	\$46	\$34	\$20
2nd Child	6:30-9:00am	\$62	\$52	\$42	\$31	\$18
Add'l Out of District Fee	6:30-9:00am	\$12	\$10	\$8	\$6	\$4
After Care	Times	5 days	4 days	3 days	2 days	1 day
1st Child	3:30-6:30pm	\$83	\$68	\$55	\$39	\$23
2nd Child	3:30-6:30pm	\$77	\$63	\$51	\$36	\$21
Add'l Out of District Fee	3:30-6:30pm	\$12	\$10	\$8	\$6	\$4

ACES POWERPLAY!

ACES/BEYOND SCHOOL PROGRAM

Grades K-6 (2024-2025 School Year)

Registration Began Monday, July 8.

The ACES program is designed to provide a safe, structured before and after school program for children attending District 122 schools in grades Kindergarten through sixth. The program hours are 6:30am until school begins and after school until 6:30pm.

Online registration will be available after your one-time nonrefundable \$35 registration fee has been paid.

- Weekly payment is due on Tuesday of the previous week
- After Tuesday a \$25 late fee per child will be charged
- Late registration will be taken until the previous Thursday at Noon, online or through our office
- Registration will not be taken after the cutoff, no exceptions
- No registration will be taken at the program
- We do not credit accounts for days absent or transfer days

Payment can be made online, emailed to geninfo@newlenoxparks.org, in person during business hours, or dropped off at the drop box located outside of the NLCPD Administration Building, 701 W. Haven Avenue.

We offer an Automatic Payment Plan option for those individuals who are attending ACES on a set schedule.

Please view the Commitment Form and the Financial Agreement Form on our website. To enroll in the Automatic Payment Plan, you must complete and submit these forms to the Park District office one week prior to starting the program. There will be a \$50 service/late charge if your card declines.

ePACT For ACES

All families are required to use ePACT. ePACT information must be completed prior to the first day participant attends program. ePACT is a secure emergency network, that we will use to collect medical and emergency contact information electronically.



Price List	5 DAYS	4 DAYS	3 DAYS	2 DAYS	1 DAY	PROGRAM LOCATIONS
BEFORE SCHOOL	\$67	\$56	\$46	\$34	\$20	Spencer ACES Spencer Crossing School Cafeteria Nelson ACES Nelson Prairie School Cafeteria Tyler/Bentley ACES Tyler School Cafeteria Haines/Oakview ACES Haines School Cafeteria
2nd child	\$62	\$52	\$42	\$31	\$18	
AFTER SCHOOL	\$83	\$68	\$55	\$39	\$23	
2nd child	\$77	\$63	\$51	\$36	\$21	
½ Day Early Dismissal Upcharge	9/20, 10/31, 11/22, 12/20 2/14, 3/14, 5/9, 5/30				\$20	



Lincolnway
SPECIAL RECREATION
ASSOCIATION

BUILDING A COMMUNITY WITHOUT LIMITS

About Us

Since 1976, the Lincolnway Special Recreation Association (LWSRA) has provided recreation services for individuals with disabilities through a cooperative agreement with its eight member park districts: Crete, Frankfort, Frankfort Square, Manhattan, Mokena, New Lenox, Peotone and Wilmington Park Districts. Participants enjoy active, healthy and more independent lifestyles through a variety of recreational and social opportunities.

Benefits of Recreation

- ✓ Discover new experiences & interests
- ✓ Build confidence & friendships
- ✓ Socialize in an inclusive setting



Our services



Social Programs

Engage with similar-aged peers in a structured but fun-filled social environment. Staff create opportunities to develop skills and try new experiences. Popular programs include dances, bingo, trivia, community trips, adult day program, summer camps and social groups.



Interest-based Programs

Find programs centered around fitness or cultural arts. Try competitive Special Olympics and adapted sports or fitness outlets such as strength & conditioning and introductory sports skills. Enjoy creative arts through cooking, drawing & painting, dancing and more!



Inclusion Programs

Park Districts welcome participation of individuals with disabilities in all recreational programs. The district works cooperatively with LWSRA to facilitate successful participation for individuals who request an inclusion aide. Inclusion services give participants the needed support in a typical park district setting.

LEARN MORE AT WWW.LWSRA.ORG



(815) 320-3500
support@lwsra.org



1900 Heather Glen Drive
New Lenox, IL 60451

ADULT ATHLETICS

Pickleball League

Adult
Lincoln-Way Central High School Field House

In this 2-on-2 pickleball league, teams will play an 8-game regular season followed by a single-elimination tournament based on the season's standings. This is a fun yet competitive and laid-back league with no referees, players must call their own game. League matches will be kept track of through the entire season. Game times are at 9:30am or 10:30am with the time changing each week. Scheduled start/end dates and game times are subject to change. Only the captain of the team needs to register. Each player must bring their own paddle. League information will be emailed to each captain prior to the season.
Registration deadline is Friday, September 13.

Activity	Day	Date	Time	R/NR
28360-A1	SU	9/22-11/24	9:30 or 10:30am	\$140/team

Flag Football Turkey Tournament

Adult
Fieldstone Park

Prior to sitting down in front of the television for Thanksgiving football, get some practice in for yourself in this one-day, double-elimination Flag Football Tournament. We will play two 20-minute halves with a running clock; all players are eligible receivers. This is an 8-on-8 tournament, and each roster can have a maximum of 20 players. Limited spots are available so don't wait to register a team. Prizes will be awarded to the top two teams of the tournament. Check-in begins at 8:00am. In the chance of the tournament being cancelled due to weather conditions, games will be rescheduled to Saturday, November 9.
Registration deadline is Wednesday, October 16.

Activity	Day	Date	Time	R/NR
24230-A1	SA	11/2	8:30am	\$266/team

Daddy/Daughter
Date Night

Friday, November 1
6:00-8:00PM

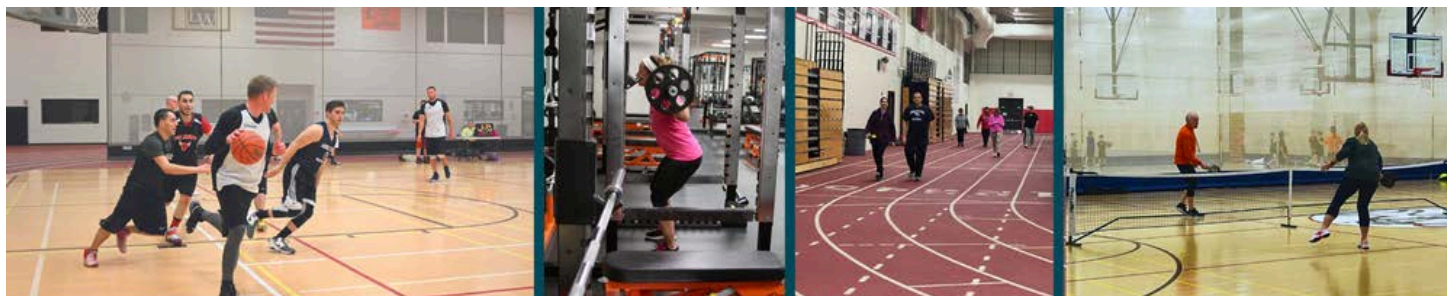


See page 39 for more details!

Adult Drop-in Programs

Lincoln-Way West and Lincoln-Way Central High School Field House

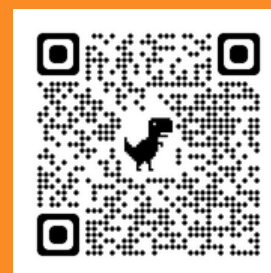
Get off the couch and come play! Patrons must follow drop-in procedures and show a valid picture ID. Drop-in participants must pay at the front desk when arriving to the Field House. Cash only. Sign up for a season pass for a discounted rate!



ACTV#	LOCATION	DAY/TIME	DATES	FEES
Pickleball ACTV#26298-A1	LW Central Field House	Mon., 7:00-9:00pm	9/9-12/9	\$66/LWR Season Pass \$76/NR Season Pass \$10/LWR • \$20/NR per night
Women's Open Fun Basketball ACTV#27291-A1	LW Central Field House	Mon., 7:00-9:00pm	9/9-10/21	\$35/LWR Season Pass \$45/NR Season Pass \$10/LWR • \$20/NR per night
Women's Open Fun Volleyball ACTV#27296-A1	LW Central Field House	Mon., 7:00-9:00pm	9/9-12/9	\$66/LWR Season Pass \$76/NR Season Pass \$10/LWR • \$20/NR per night
Volleyball ACTV#27295-A1	LW Central Field House	Wed., 7:00-9:00pm	9/4-12/11	\$66/LWR Season Pass \$76/NR Season Pass \$10/LWR • \$20/NR per night
Open Gym (Badminton, Volleyball, Basketball) ACTV#27299-A1	LW Central Field House	Thurs., 6:00-9:00pm	9/5-10/24	\$10/LWR • \$20/NR per night
Men's 35 & Older Basketball ACTV#27293-A1	LW West Field House	Mon. & Wed., 7:00-9:00pm	9/4-12/11	\$116/LWR Season Pass \$126/NR Season Pass \$10/LWR • \$20/NR per night
Open Basketball ACTV#27299-A1	LW West Field House	Thurs., 6:00-9:00pm	9/5-10/24	\$10/LWR • \$20/NR per night

Skip Day Information

- Scan the code for the Lincoln-Way Field House and Fitness Center monthly schedules.
- The Field House may end earlier due to lack of attendance. Patrons are encouraged to arrive at the program's start time.
- Due to circumstances beyond our control, additional skip days may be added. These dates will be posted as we are notified



LINCOLN-WAY WEST INDOOR WALKING TRACK



INDOOR WALKING TRACK INFORMATION

Utilizing the Walking Track is **FREE** for Lincoln-Way Residents.
Non-Residents must pay a rate of \$5 per visit.

Field House Entrance

September 9-December 20

Lincoln-Way West Walking Hours

Mon., Wed.-Fri., 6:00-9:00pm

Sat., 1:00-4:00pm

Sun., 9:00am-1:00pm

Lincoln-Way Central Walking Hours

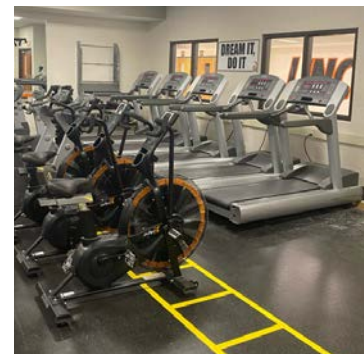
Mon., Wed. & Thurs., 6:00-9:00pm

Track Information

Age 18 & Older

Must have photo ID

- A temporary walking pass will be provided at the Park District check-in desk at the Field House
- Approximately 8-9 laps in lanes 5 or 6 equal one mile
- Be alert for others around you
- Slower moving users shall stay on the inner side of the track and faster moving users shall stay to the outside. Only two side-by-side users allowed during programs. Users may not be three abreast across the track.
- Inappropriate behavior will not be tolerated. Such behavior will result in the revocation of participant's pass. All revocations are subject to the Director of Recreation's review/interpretation.
- Only gym shoes will be allowed in the Field House
- No food or beverages other than water are allowed in the Field House



LINCOLN-WAY WEST FITNESS CENTER:

September 9-December 20

Age 14 & Older

The Lincoln Way West Fitness Center has been renovated and now only includes free weights and cardio machines. Patrons must provide a valid picture ID upon entering the Fitness Center.

Day	Time
M-F	6:00-9:00pm
SA	1:00-4:00pm
SU	9:00am-1:00pm

- Drop-In participants under the age of 18 must have a signed Parent Permission Slip which can be found on our website under the Drop-In Programs tab
- Registration is only taken at the Park District office or at the fitness center during the Park District's scheduled hours. You are NOT able to register through Lincoln-Way.

Fees & Membership

Ages 14-22 (LW Resident Student with ID)

Activity LWR

27512-A1 \$51

Age 18-54

Activity LWR/NR

27512-A2 \$81/\$91

Ages 55 & Older

Activity LWR/NR

27512-A3 \$26/\$36

Daily Drop-In Rate

LWR/NR \$10/\$20

Skip Day Information

- Scan the code for the Lincoln-Way Field House and Fitness Center monthly schedules.
- The Field House may end earlier due to lack of attendance. Patrons are encouraged to arrive at the program's start time.
- Due to circumstances beyond our control, additional skip days may be added. These dates will be posted as we are notified



FITNESS Age 12 & Older

This Fall, choose to make health and fitness a lifestyle change! Studies show that exercise helps you feel better, sleep better, and have more energy! Join one of our many programs to help you stay focused. Participants under the age of 16 are required to be registered along with a parent.

Hatha Yoga

Ages 12+

LCC (Room 2) Entry C

Instructed By: Heather Letts

Hatha Yoga is used to create balance in the body and the mind. This is accomplished by looking to the eight limbs of yoga including asana (physical movement) and pranayama (breathing exercises). During the course we will discover how the linking of physical movement and breath work can begin to slow the mind and release stress. This class is great for people who are looking to decompress from their day or need low impact exercises that will still build strength. All levels of experience and flexibility are welcome! For your comfort, please come to class on an empty stomach (eat two hours before class) and wear loose-fitting clothing. Bring your own yoga mat and strap to class.



Activity	Day	Date	Time	R/NR
27519-A1	TH	9/5-10/10	7:30-8:30pm	\$54/\$64
27519-A2	TH	10/17-11/21	7:30-8:30pm	\$54/\$64



FIT4MOM: Body Ignite

Lincoln-Way West High School Dance Studio

Instructed By: Fit4Mom Certified Instructors

Body Ignite is a one-stop body shock. Targeting each muscle with specially designed sequences and a weighted bar or dumbbells will leave you stronger and begging for more. Dedicated core and flexibility work are also included to help you move and feel better. A perfect complement to any cardio class or activity you currently enjoy, this easy-to-follow strength-based program will increase your metabolism, athleticism, and ability to lift, lunge and lug everything mom-life throws at you! To learn more and to register for class, please visit lemont.fit4mom.com or email meghanstone@fit4mom.com.

Day	Date	Time	Skip Dates
TH	Sep.-Dec	6:30-7:30am	10/31, 11/28

Frankfort New Lenox Running Club

Adult

The Frankfort New Lenox Running Club is an easy going, all volunteer club, focused on running. There is no fee or pace requirements. Everyone is welcome; just show up and run! We do not host sanctioned or timed events. We host weekly group runs, which are posted on our Facebook page. To join, visit their Frankfort New Lenox Running Club Facebook page. Please refer to the events tab on their Facebook page for potential changes to either the run location or cancellations due to weather.

Note: All members must complete the waiver on the Facebook page before being added to the group.



779-324-7144

91 Bankview Dr, Frankfort, IL 60423

ADULT PROGRAMS

Active Adult Exercise

Age 55 & Older

Administration Building (All-Purpose Room)



Get in shape and have fun during this fitness class designed for active adults! Stretching and cardiovascular exercises are included. All fitness levels are welcome. No instructor: class follows along to a CD called "Fun & Fitness Over 50".

Activity	Day	Date	Time	Skip Date
29190-A1	M/W/F	9/4-12/20	10:00-11:00am	10/14, 11/11 11/29

Women's Workout Club

Age 55 & Older



Join our Women's Workout Club and experience the convenience and effectiveness of exercising along with an audio CD. Get ready to enjoy staying active and improving your fitness goals in a supportive community of like-minded women who motivate each other on your fitness journey.

Activity	Day	Date	Time	Skip Date
27253-A1	M/W/F	9/4-12/20	10:00am-11:00am	10/14, 11/11 11/29

Location: Senior Housing Community Room
1090 South Cedar Road, New Lenox

Tai Chi

Age 50 & older

This class is offered by Will County Senior Services. The goal of this class is to improve balance to prevent falls, increase flexibility and reduce stress. Its slow, soothing movements incorporate deep breathing and relaxing postures that help calm the mind and body each time you go through gentle movements.

Intermediate Level

Day	Date	Time
TU	7/2-9/24	1:30-2:30pm
TU	10/1-12/17	1:30-2:30 pm

Beginner Level

Day	Date	Time
TU	7/2-9/24	2:30-3:30pm
TU	10/1-12/17	2:30-3:30pm

Fee:

Must have a Will County Senior Services Membership. Please call Senior Services at 815-723-9713 for details or visit www.willcountyseniors.org

Location: Senior Housing Community Room
1090 South Cedar Road, New Lenox

Golden Disc Golf

Age 55 & Older

Haines Wayside Park



Embrace the joy of disc golf, connect with fellow enthusiasts, and enjoy friendly competition. Grab your discs and head to the newly re-designed disc golf course located at Haines Wayside Park. Must supply your own discs.

Activity	Day	Date	Time
27572-A1	TU	9/10	10:00am-11:30am
27572-A2	TU	10/15	10:00am-11:30am

Scams and Frauds: How Not to Become a Victim

Adult

Administration Building (All-Purpose Room)

Presented by: Sonya Tomkins, Community Outreach Liaison,
Office of the Illinois Attorney General



Join us for an informative presentation hosted by the Illinois Attorney General's Office, where we will discuss the alarming increase in scams and frauds targeting our community, particularly our seniors. With the rise of technology and evolving tactics by fraudsters, it's more important than ever to be vigilant and informed about these threats.

In this presentation, we will:

- Explore Current Trends: Learn about the latest scams and frauds circulating in our community, including common tactics used by fraudsters to deceive and exploit victims.
- Understand Vulnerabilities: Understand why seniors are often targeted and identify common factors that make individuals susceptible to scams and frauds.
- Recognize Red Flags: Discover key warning signs of scams and frauds, including suspicious phone calls, emails, and online messages, as well as tactics used to create a sense of urgency or fear.
- Access Resources and Support: Learn about the resources and support services available through the Illinois Attorney General's Office for victims of scams and frauds, including guidance on reporting incidents and accessing assistance.

By attending this presentation, you will be equipped with the knowledge and tools necessary to safeguard yourself and your community against scams and frauds. Together, we can work towards creating a safer and more resilient community where everyone can thrive without fear of exploitation.

Registration deadline is Tuesday, September 10.

Activity	Day	Date	Time
24542-A1	TU	9/17	10:00am-11:30am



Coloring Club

Age 55 & Older

Administration Building (All-Purpose Room)



Coloring isn't just for kids anymore! You will rediscover the simple relaxation and joy of coloring. This is a great activity to explore your artistic side. You will get the joy of creating a beautiful work of art with no artistic skills required. Coloring is known to reduce stress and improve hand-eye coordination. This club will meet on selected Wednesdays and all materials are included. Please register at least one week prior to the beginning of the session or the class may be cancelled.

Activity	Day	Date	Time
29592-A1	W	9/4, 9/18, 10/2, 10/16 10/30, 11/13, 12/4, 12/18	1:00-2:30pm

Jam Session & Social Time

Adult

LCC (Room 1) Entry C



Gather for an afternoon of music! Can't play an instrument? Join us to listen, sing along and meet new friends. If you do play, tune up your instrument and come join this group of musicians that meet the first Tuesday of each month. All types of music are played from the American Song Book, the Swing Era, Dean Martin and Frank Sinatra. Email kmatson@newlenoxparks.org for more details. Bring your sheet music to share.

Day	Dates	Time
TU	9/3, 10/1, 11/7, 12/5	2:30-4:30pm

Quilting Club

Age 55 & Older

Attention all quilting enthusiasts! Join us on select Wednesdays and Fridays along with other quilters. On Wednesdays, we take turns sharing and showing. Fridays at our Quilting Club are set aside to work on your unfinished projects. We occasionally go on quilting road trips and donate quilts to charities. All talent levels are welcome. This club meets on the first Wednesday and the third Friday of each month. Don't forget your machine! Our group continues to grow and is always looking for new members.

Activity	Day	Date	Time	R/NR
29241-A1	W	9/4, 10/2, 11/6, 12/4	10:00am-3:30pm	\$20/Yr
	F	9/20-10/18 11/15, 12/20	10:00am-3:30pm	

Location:

Senior Housing Community Room
1090 South Cedar Road, New Lenox

Left, Center, Right Club

Age 55 & Older

Administration Building (All-Purpose Room)



Left, Center, Right is a simple dice game that can be played with quarters for added excitement. The objective of the game is to be the last player with quarters remaining. It's a game of luck and strategy, where players take turns rolling special LCR dice and passing their quarters based on results. Please bring your own quarters.

Activity	Day	Date	Time
27710-A1	TH	9/12, 10/17, 11/14	10:00-11:30am

Metamucil 50+ Golf Outing

Sanctuary Golf Course

October 15, 2024

9:00am Shotgun Start

Register in person at the
New Lenox Community Park District

OR
SCAN ME
TO REGISTER



BUS TRIPS



TAKE A TRIP with the New Lenox Community Park District!

We have a variety of travel destinations to choose from, so sit back, relax and let us take care of the driving. Call your family, friends and neighbors and join the fun! Please note that there is no additional fee for nonresidents charged for our bus trips. For further details for the trips listed here or to suggest a future travel destination, please contact the Recreation Department at (815) 485-3584, we'd love to hear from you!

How much walking to expect:

Minimal =  Some = 

Mostly = 

Oktoberfest with the Die Kellerknaben Polka Band

Adult
Crest Hill, IL



Join us at Prairie Bluff Banquet Hall for a German feast and entertainment by the Die Kellerknaben Polka Band. From the beer halls of Munich to the taverns of Chicago, Die Kellerknaben has its roots deeply in the heart of polka. Die Kellerknaben plays music that makes you want to dance! Each guest gets a beer ticket and a take home Lebkuchenherzen dessert from Springview Sweets Bakery. Fee includes transportation, performance, lunch, and gratuity.

Registration Deadline is Friday, September 6

Activity	Day	Date	Time	R/NR
21513-A1	TH	9/26	10:45am (Departs LCC Door C) 3:30pm (Return Approximately)	\$60

The Full Monty at Paramount Theaters

Adult
Aurora, IL



From the unemployment line to the self-made man, The Full Monty bares it all! The Full Monty is a side-splitting musical that follows Jerry, Dave and pals, part of a group of unemployed steelworkers in Buffalo, New York. With their backs to the wall, they decide to create a male strip show to help pay their mortgages and provide for their families after layoffs. Facing economic — and in some cases personal — disaster, and their insecurities, these taboo-busting boys bare their souls and their bodies. Thanks to a hearty blue-collar work ethic, they happily abandon the daily unemployment grind for a different kind of grind, stripping off the layers of toxic masculinity to reflect the true ingenuity of the American spirit — gettin' it done! Join us for this empowering tale that proves the naked truth that anything can be accomplished with the right mix of friends and courage. The songs in this 10-time Tony Award nominee capture the spirit of the '90s, delivering the goods with songs like "You Rule My World" and inspiring lyrics in "Breeze Off the River". The Full Monty delivers a feel-good experience that challenges stereotypes and celebrates the triumph of the human spirit.

Registration Deadline is Friday, September 13

Activity	Day	Date	Time	R/NR
29542-A1	W	10/2	11:00am (Departs LCC Door C) 5:15pm (Return Approximately)	\$115

*Our new facility is now open
to serve the community*



Family Owned & Operated since 1928

(815) 485-8697 • 2100 Calistoga Drive, New Lenox • hickeyfuneral.com

Autumn on the River

Adult
Utica, IL



Join us as we travel to Starved Rock to see the beautiful fall colors. Autumn on the River tours are a great way to see the beautiful fall foliage as you cruise along the Illinois River. Our day begins with lunch in the historic dining room at the Lodge, followed by a narrated trolley tour with the history and legends of the area. The trolley will then take you to the new riverboat, "The Eagle I" where you will see the beautiful fall foliage of the Starved Rock State Park area by water. Fee includes lunch, trolley tour, riverboat cruise, and transportation.

Registration Deadline: September 20

Activity	Day	Date	Time	R/NR
21530-A1	W	10/23	9:15am (Departs LCC Door C) 4:45pm (Return Approximately)	\$119

Teatro Zinzanni

Adult
Chicago, IL



Teatro ZinZanni is an original form of entertainment combining a unique fusion of cirque, comedy, cabaret, spectacle, and live music all the while serving up a multi-course feast. A spectacle of unforgettable performances, sumptuous cuisine, and premium entertainment awaits you within the velvet walls of the Spiegeltent ZaZou in the heart of the Chicago Loop. Fee includes show, lunch, non-alcoholic drinks, and transportation.

Registration Deadline: October 1

Activity	Day	Date	Time	R/NR
21532-A1	TH	11/14	10:00am (Departs Frankfort Founders Center) 5:00pm (Return Approximately)	\$169

Christkindlmarket Aurora

Adult
Aurora, IL



Inspired by the Christkindlmarket in Nuremberg, Germany, the Christkindlmarket Aurora brings a cherished German and European tradition to Aurora. There are hand-blown ornaments, classic German goods, wooden handicrafts, and so much more. If you're lucky, you'll witness some crafters at work, then can purchase their goods there on the spot. You absolutely have to sample the assortment of sweet and savory goods offered. Enjoy sausages, potato pancakes, Strudel and more, washed down with traditional hot spiced wine or German beer. Fee includes transportation only.

Registration Deadline is Friday, Nov. 1

Activity	Day	Date	Time	R/NR
21512-A1	TH	11/21	10:15am (Departs LCC Door C) 4:00pm (Return Approximately)	\$30

Holiday Shopping in Woodstock

Adult
Woodstock, IL



See why Woodstock was voted the most festive Christmas town in Illinois. Every year, the Woodstock Chamber hosts a Ladies Night Out event where you can enjoy some holiday shopping in the festively lit shops around Woodstock Square. This year's theme is "Fa La La La" and guests are invited to dress up in their favorite holiday apparel. This delightful evening out will feature seasonal music throughout the downtown area including live performances from local groups. Every guest will receive a complimentary tote bag and a coupon book loaded with local deals and specials. This trip is sure to put you in the holiday spirit! Fee is transportation only.

Registration Deadline: November 12

Activity	Day	Date	Time	R/NR
21504-A1	TH	12/5	1:15pm (Departs LCC Door C) 9:15pm (Return Approximately)	\$55

Newport, Rhode Island

Adult



A world of exceptional elegance! View inspirational architecture and elegant style in Newport's Gilded Age Gothic Revival villas, shingle-style cottages, and opulent Italian and French palaces. Cruise on Newport Harbor and see the town at its picture-perfect best. Tour the oldest synagogue building still standing in the U.S. Sip sparkling wine at a popular local vineyard. Delicious dinners complete your stay in fabulous Newport! This trip includes 5 nights lodging, meals (5 breakfasts & 2 dinners), Historic Tour of Newport, Newport Harbor Cruise, Tours of: "The Breakers," "The Elms" and "Marble House", Greenvale Vineyards Tour and Tasting, Touro Synagogue, Brick Marketplace, Twin River Casino, luggage handling, and all gratuities. Trip insurance is available and highly recommended. It must be purchased within 14 days of paying your \$25 trip deposit. Please request at the time of registration.

Registration Deadline/Final Payment due March 4

The trip departs from the Frankfort Park District Founders Community Center at 8:00am on Sunday, June 1 and returns in the evening on Friday, June 6.

Activity	Day	Date	R/NR
21538-A1	SU-F	6/1-6/6	\$1539 per person single
21538-A2	SU-F	6/1-6/6	\$1139 per person double

To ensure the success of our trips, some are scheduled in cooperation with Frankfort Park District.

Sorry..... there are no refunds on bus trips

CHILDREN'S PROGRAMS

Toddle Time!

Ages 1-3

LCC (Room 1) Entry C



Come join the fun! We will run, jump, play, sing, make crafts and read stories. This class will introduce your child to a class setting, following directions, and listening as a group. This class is taught by a Kiddie Kampus preschool teacher. Infants are also allowed in the class to watch the fun so no need to find a babysitter. Price is for up to two children only.

Activity	Day	Date	Time	R/NR	Skip Dates
20128-A1	TU	9/10-10/15	9:30-10:30am	\$80/\$90	
20128-A2	TU	10/22-12/3	9:30-10:30am	\$70/\$80	11/5, 11/26
20128-A3	TU	9/10-10/15	10:45-11:45am	\$80/\$90	
20128-A4	TU	10/22-12/3	10:45-11:45am	\$70/\$80	11/5, 11/26

School Time!

Ages 1-3

LCC (Room 1) Entry C



Each week the class will cover a letter, number, color, or shape. A parent or caregiver stays to interact with their child to encourage socialization during free play time and participation in circle time learning. This class is taught by a Kiddie Kampus preschool teacher. Infants are also allowed in the class to watch the fun, so no need to find a babysitter. Price is for up to two children only. This class can be taken in conjunction with Toddle Time!

Activity	Day	Date	Time	R/NR	Skip Date
20311-A1	W	9/11-10/16	9:30-10:30am	\$80/\$90	
20311-A2	W	10/23-12/4	9:30-10:30am	\$80/\$90	11/27
20311-A3	W	9/11-10/16	10:45-11:45am	\$80/\$90	
20311-A4	W	10/23-12/4	10:45-11:45am	\$80/\$90	11/27



Two's Kiddie Kampus Preschool Prep

Age 2

LCC (Bi-Centennial Room) Entry E



This is a great preparation class for children entering preschool next year. The alphabet, numbers, colors and shapes will be introduced. Also, a fun craft will be made each week. Session 2 is a continuation of Session 1. The instructor cannot change diapers. Please bring your own nut-free snack each day and a full size backpack.

Activity	Day	Date	Time	R/NR
20132-A1	TU/TH	9/10-10/17	9:45-11:45am	\$216/\$226
20132-A2	TU/TH	10/22-12/5	9:45-11:45am	\$199/\$209

Session 2 Skip Dates: 11/5, 11/26, 11/28

Lil' Learners

Ages 2-3

LCC (Bi-Centennial Room) Entry E

This class will prepare your child for preschool by presenting the basic skills, emphasizing the social development of your child and the importance of learning through play. Group and individual activities will help your child develop new skills and make new friends. Session 2 is a continuation of Session 1. The instructor cannot change diapers. Please bring your own nut-free snack each day and a full size backpack.

Activity	Day	Date	Time	R/NR	Skip Date
20192-A1	F	9/13-10/18	9:45-11:45am	\$108/\$118	
20192-A2	F	10/25-12/6	9:45-11:45am	\$108/\$118	11/29

Wild World

Ages 5-12

Instructed by: Crayola Imagine Arts Academy



Discover nature in a way that inspires empathy, curiosity, and creativity. Learn about many different animals and how wildlife conservationists are working to protect species around the globe. Experiment with a variety of art techniques and use Crayola art materials to create projects like frog paintings, slithering snakes, and coiled turtles.

Activity	Day	Date	Time	R/NR
28156-A1	SA	8/17-9/5	10:00-11:00am	\$147/\$157

Location:

The Program Center Art Room @ Mokena Community Park District
10925 W. La Porte Rd, Mokena, IL 60448

Magic Class!

Ages 5-12

LCC (Room 2) Entry C

Instructed by: Magic Team of Gary Kantor



Children are guaranteed to have a great time as they learn a collection of fascinating and mesmerizing tricks from the Magic Team of Gary Kantor! Amaze family and friends with tricks that involve cards, ropes, coins, mind-reading and more. All materials are provided, and each child receives a magic kit to take home. Children are grouped by age and always learn tricks that are age appropriate. Children can sign up again since new tricks are taught at each class.

Activity	Day	Date	Time	R/NR
21260-A1	F	9/20	6:45-7:40pm	\$32/\$42
21260-A2	TH	11/7	5:00-5:55pm	\$32/\$42

Critter Class Parent & Me

Ages 3-13

LCC (Room 1) Entry C

Instructed by: Crosstown Exotics



Critter class is an introduction to some of the world's most misunderstood creatures. Reptiles, Amphibians, and bugs. We will teach the importance of these creatures to the environment as well as their natural history and how to take care of them as pets. Class will feature live animals. No open toed shoes. An Adult must attend with participants.

Activity	Day	Date	Time	R/NR
21120-A1	W	9/25	6:00-7:00pm	\$38/\$48
21120-A2	W	11/13	6:00-7:00pm	\$38/\$48

STEM Sleuths

Ages 8-12

Instructed by: Little Medical School



Our STEM Sleuths program is a 6-hour course designed to expose students ages 8-12 to the forensic science used to solve a crime. Students will conduct experiments on fingerprinting, collecting shoe prints, chromatography, composite drawing, facial reconstruction, toxicology, and handwriting analysis. The class culminates in the forensic student team working together to solve a crime.

Registration Deadline is Friday, October 25.

Activity	Day	Date	Time	R/NR	Skip Date
28157-A1	W	10/30-12/11	5:30-6:30pm	\$164/\$174	11/27

Location:

The Oaks- Walnut Room @ Mokena Community Park District
10925 W. La Porte Rd, Mokena, IL 60448

Little Veterinarian School Dog

Ages 4-6

Instructed by: Little Medical School



After "adopting" their very own plush puppy, students will roleplay the key responsibilities of a veterinarian, including how to properly perform a nose-to-tail exam. These future veterinarians will learn how to sew stitches, remove ticks, make healthy treats, and vaccinate their dog.

Registration Deadline is Friday, October 25.

Activity	Day	Date	Time	R/NR
26220-A1	W	10/30-12/11	10:00-11:00am	\$151/\$161

Location:

The Oaks- Walnut Room @ Mokena Community Park District
10925 W. La Porte Rd, Mokena, IL 60448



CHILDREN'S PROGRAMS



Rising Star Musical Theater

Ages 6-11

LCC (Room 1) Entry C

Instructed by: All About Music & Children's Theatre



Explore your dramatic and creative side while learning theatrical terms, musical concepts, and basic dance steps. Students will learn acting warmups, improv games and how to make props. They will also prepare a short performance of a popular musical such as "Aladdin", "Moana" or "Willy Wonka" to be given during the final class.

Activity	Day	Date	Time	R/NR	Skip Date
20151-A1	TU	9/10-10/29	6:45-7:45pm	\$137/\$147	10/15



Youth Cooking Class

Ages 8-11

LCC (Kitchen) Entry C

Instructed by: Nutritious Earth



Nutritious Earth is a hands-on cooking program for youth. Participants are introduced to new and fun recipes each session that are colorful, delicious and easy to make. Culinary skills, food safety and sanitation are taught in an environment where nutritional value is explored and celebrated through mindful food awareness.

Activity	Day	Date	Time	R/NR
28301-A1	F	10/4-10/25	6:00-7:00pm	\$216/\$226

I Speak Spanish! – Spanish for Kids

Ages 3-6

Instructed by: Language in Action, Inc.



Expand your child's world! Introduce your child to the Spanish language in this Spanish immersion class developed especially for very young learners. Children will be immersed in the Spanish language through fun and educational activities and music. Each session covers new and exciting material!

Activity	Day	Date	Time	R/NR	Skip Date
24245-A1	TU	9/10-10/15	5:00-5:45pm	\$111/\$121	
24245-A2	TU	10/22-12/3	5:00-5:45pm	\$111/\$121	11/26

Location:

Frankfort Park District, Founders Community Center
140 Oak Street, Frankfort, IL

Vamosos Youth Spanish Club

Ages 6-11

Instructed by: Language in Action, Inc.



Learning a second language can open a world of possibilities for your child. In this class, students will learn Spanish conversation and some Spanish grammar, reading and writing skills through interactive, engaging and fun activities and games. Each session covers new and exciting materials!

Activity	Day	Date	Time	R/NR	Skip Date
24315-A1	TU	9/10-10/15	6:00-6:45pm	\$111/\$121	
24315-A2	TU	10/22-12/3	6:00-6:45pm	\$111/\$121	11/26

Location:

Frankfort Park District, Founders Community Center
140 Oak Street, Frankfort, IL

Fiesta Time Christmas Minicamp - Make Your Own Mini Piñata!

Ages 4-10

Instructed by: Language in Action, Inc.



Did you know that pinatas are a part of the Christmas celebration in many Mexican families? In this one-day camp, children will decorate their very own mini pinata while learning some Christmas words in Spanish and singing Christmas carols, all in Spanish! All material is included.

Activity	Day	Date	Time	R/NR
27185-A1	SA	12/7	9:30-11:00am	\$31/\$41

Location:

Frankfort Park District, Founders Community Center
140 Oak Street, Frankfort, IL

T-Ball Time

Ages 3-4

Spencer Trail School Gymnasium (Entry N)



T-Ball Time will feature parent/child introduction in T-Ball basics such as base running, field positions, batting and sportsmanship. This class will have a lot of repetitive drills to introduce the kids to the game. Adults must participate with children each week. Children must bring their own labeled mitt to class.

Activity	Day	Date	Time	R/NR
20141-A1	W	9/4-9/25	5:00-6:00pm	\$60/\$70
20141-A2	W	10/2-10/23	5:00-6:00pm	\$60/\$70

Sports 101

Ages 5-8

Spencer Trail School Gymnasium (Entry N)

Does your child want to begin playing sports, but may need to learn the basics? If so, these introductory classes are what you are looking for! These classes will have a lot of repetitive drills to make sure each player can master the fundamentals before playing a game at the end of the session. Players will also improve their hand-eye coordination and large motor skills. Participants attending the T-Ball 101 class must bring their own labeled mitt.

T-Ball 101

Activity	Day	Date	Time	R/NR
20331-A1	W	9/4-9/25	6:00-7:00pm	\$60/\$70

Multi-Sport 101

Activity	Day	Date	Time	R/NR
20331-A2	W	10/30-11/20	6:00-7:00pm	\$60/\$70

Pre-Season Fall Basketball

Ages 6-13

This fall league will give your child the opportunity to improve his/her skills before moving to the Basketball League. This league is designed for the player that just wants to get out and play. Each week a basic skill will be taught and then games will be played. This is meant to be a learning opportunity mixed with game play.

Location: Spencer Crossing School Gymnasium (Entry L)

Activity	Day	Date	Time	R/NR
28333-A1	M	9/9-9/30	6:30-7:30pm	\$60/\$70

Location: Spencer Trail School Gymnasium (Entry N)

28333-A2	W	10/2-10/23	6:00-7:00pm	\$60/\$70
----------	---	------------	-------------	-----------



KIDS FIRST SPORTS SAFETY INC.

Kids First Soccer Fundamentals

Ages 5-12



See the Goal! This soccer program teaches fundamentals that all players need to understand when kicking the ball. This prepares kids how to play the game! Coaches will demonstrate ball handling, goalie positioning, first step directional movements, kicking, player positioning, and how to play the game with fundamentals. This program is ideal for beginners to advanced players that will enjoy learning through fun team competitive soccer drills. A championship game will conclude the program. There are new team competitive drills that kids learn and develop for the sport each time!

Location: Spencer Trail School Gymnasium (Entry N)

Activity	Day	Date	Time	R/NR
26674-A1	TH	9/5-9/26	5:00-6:15pm	\$114/\$124

Location: Sharon's Bay Park

Activity	Day	Date	Time	R/NR
26674-A2	SA	9/7-9/28	11:30am-12:45pm	\$114/\$124
26674-A3	SA	10/5-10/26	11:30am-12:45pm	\$114/\$124

Kids First Flag Football Fundamentals

Ages 5-12

Spencer Trail School Gymnasium (Entry N)



Are you ready for some football? Combining flag football fundamental preparation with flag football games, coaches will teach football techniques with body balance and safety positioning, giving a player confidence to enjoy the game of football. The first two weeks are dedicated to understanding the game through team competitive drills of how to play various positions. Flag Football games will be played once the coach feels everyone is ready to play. A championship game will conclude the program. There are new team competitive drills that kids learn and develop for the sport each time!

Activity	Day	Date	Time	R/NR
26675-A1	TH	9/5-9/26	6:15-7:30 pm	\$114/\$124



Kids First Track & Field

Ages 5-12



Coaches will focus on teaching indoor sprints, hurdles, jumps, running and throws in a safe and fundamental way. The program consists of body balance techniques such as speed, quickness, and agility drills. A series of team relay races makes Indoor Track & Field fun and entertaining. The program concludes with an event Championship Series. There are new team competitive drills that kids learn and develop for the sport each time!

Location: Lincoln-Way West High School Field House

Activity	Day	Date	Time	R/NR
26678-A1	SU	9/8-9/29	9:00-10:15am	\$114/\$124
26678-A2	SU	10/13-11/13	9:00-10:15am	\$114/\$124

Location: Sharon's Bay Park

Activity	Day	Date	Time	R/NR
26678-A3	SA	9/7-9/28	9:00-10:15am	\$114/\$124
26678-A4	SA	10/13-11/3	9:00-10:15am	\$114/\$124

Kids First Basketball Fundamentals

Ages 5-12



Let's hoop it up! This basketball program focuses on fundamentals, basketball games and game preparation. Players will learn techniques on shooting, dribbling, passing, floor spacing, basketball safety awareness and sportsmanship. These basketball skills and safety techniques will make your player game ready! There are new team competitive drills that kids learn and develop for the sport each time!

Location: Lincoln-Way West High School Field House

Activity	Day	Date	Time	R/NR
22120-A1	SU	9/8-9/29	10:15-11:30am	\$114/\$124
22120-A2	SU	10/13-11/3	10:15-11:30am	\$114/\$124

Location: Spencer Park

Activity	Day	Date	Time	R/NR
22120-A3	SA	9/7-9/28	10:15-11:30am	\$114/\$124
22120-A4	SA	10/5-10/26	10:15-11:30am	\$114/\$124

Kids First Flag Football 7 on 7

Ages 5-12

Lincoln-Way West High School Field House



This flag football program focuses on techniques like speed, quickness, body balance, first step directional movements, football safety awareness and sportsmanship. Players will learn passing, catching fundamentals, and receiver endzone techniques with a focus of player separation making it easier to score touchdowns. The program will conclude with a championship game! There are new team competitive drills that kids learn and develop for the sport each time!

Activity	Day	Date	Time	R/NR
26676-A1	SU	9/8-9/29	11:30-12:45pm	\$114/\$124
26676-A2	SU	10/13-11/3	11:30-12:45pm	\$114/\$124

Kids First Baseball Fundamentals

Ages 5-12

Spencer Trail School Gymnasium (Entry N)



This baseball program prepares and challenges all players through fun and competitive drills to develop skills that will maximize your player's potential. Players will experience drills in batting, fielding, pitching, base running and throwing. Kids will be divided up into groups based on age and skill. There are new team competitive drills that kids learn and develop for the sport each time!

Activity	Day	Date	Time	R/NR	Skip Date
22111-A1	TH	10/10-11/7	5:00-6:15pm	\$114/\$124	10/31

Kids First Multi-Sport Class

Ages 5-12

Spencer Trail School Gymnasium (Entry N)



This class combines sports, games, events and contests while learning safe fundamentals. Coaches plan a variety of sports and games ranging from competitive to non-competitive and leisure. Activities may include basketball, baseball, softball, soccer, dodgeball, badminton, flag football, track and field events, kickball, frisbee and more. Classes are coordinated weekly, which creates a new experience for all participants. There are new team competitive drills that kids learn and develop for the sport each time!

Activity	Day	Date	Time	R/NR	Skip Date
26677-A1	TH	10/10-11/7	6:15-7:30pm	\$114/\$124	10/31

*See our ACES Program
on page 14.*

Ultimate Beginner Volleyball Class

Ages 6-13

Spencer Crossing School Gymnasium (Entry L)



This program is open to all boys and girls who are beginners and those who want to review fundamental skills. Instruction will cover passing, setting, serving, spiking, team play and rules of the game. Skills will be broken down into simple steps and give players maximum ball contact. Games will be played every session, too!

Ages 6-7

Activity	Day	Date	Time	R/NR
22210-A1	W	9/11-10/16	6:30-7:30pm	\$81/\$91

Ages 8-9

Activity	Day	Date	Time	R/NR
22210-A2	TU	9/10-10/15	6:30-7:30pm	\$81/\$91

Ages 10-13

Activity	Day	Date	Time	R/NR
22210-A3	W	9/11-10/16	7:30-8:30pm	\$81/\$91



Ultimate Volleyball Game Play

Ages 10-13

Spencer Crossing School Gymnasium (Entry L)



This program is open to all boys and girls who are looking to improve their skills in a game-like setting. Practice your skills of passing, setting, serving, and spiking through game simulation drills. Play together as a team by learning in-game strategies from Ultimate Volleyball Coaches. Show off your fresh skills in this new Ultimate Volleyball Game Play Program.

Activity	Day	Date	Time	R/NR
22210-A4	TU	9/10-10/15	7:30-8:30pm	\$81/\$91

Rookie Rugby

Ages 6-8

Lincoln-Way Central High School Field House



Rugby continues to grow in popularity and is expanding to include first, second and third graders. Rookie Rugby is a non-contact program that will introduce rugby skills through fun activities and games. This is a fun and fast-paced program taught by USA Rugby certified coaches from the South Suburban Rugby Club.

Activity	Day	Date	Time	R/NR	Skip Dates
22159-A1	W	11/6-12/11	6:00-7:00pm	\$61/\$71	11/27

Rugby 101

Ages 9-13

Lincoln-Way Central High School Field House



Rugby is one of the fastest growing youth sports in America. Rugby 101 is a non-contact program that will teach new and experienced players the fundamentals of the game while focusing on skills development and game simulations. This is a fun and fast-paced program taught by USA Rugby certified coaches from the South Suburban Rugby Club.

Activity	Day	Date	Time	R/NR	Skip Dates
27220-A1	W	11/6-12/11	7:00-8:00pm	\$61/\$71	11/27

THE NAME YOU CAN TRUST.








630-381-0927



TR Miller
HEATING • COOLING • PLUMBING



www.TRMillerNow.com

CHILDREN'S ATHLETICS

AYSO PLAY! + Soccer Program

Ages 6-14

Nelson Ridge Gymnasium



AYSO extends a warm invitation to children of various ages and skill levels to join soccer sessions guided by licensed, professional coaches. With a 60-year history embraced by millions, AYSO PLAY! nurtures the development of soccer expertise and fundamental motor skills in children. Our curriculum places a strong emphasis on social and emotional learning, ensuring a comprehensive developmental journey. Take inspiration from players like Alex Morgan and Landon Donovan and PLAY! AYSO

Ages 6-8

Activity	Day	Date	Time	R/NR	Skip Date
22334-A1	M	9/9-10/21	6:00-7:00pm	\$80/\$90	10/14

Ages 9-11

Activity	Day	Date	Time	R/NR	Skip Date
22334-A2	M	9/9-10/21	7:00-8:00pm	\$80/\$90	10/14

Ages 12-14

Activity	Day	Date	Time	R/NR	Skip Date
22334-A3	M	9/9-10/21	8:00-9:00pm	\$80/\$90	10/14

Soccer Shots

Ages 2-9

Cherry Hill Gymnasium



Soccer Shots is a high-energy program introducing children to fundamental soccer principles, such as using your feet, dribbling and the basic rules of the game. Our age-appropriate curriculum is written by soccer professionals, which allows for a positive learning environment. Through fun games and positive reinforcement, children will begin to experience the joy of playing soccer and being active. Must be correct age at the program start date. Classes will be outside at Cherry Hill weather permitting

Mini Ages 2-3

Activity	Day	Date	Time	R/NR
22170-A1	W	9/4-10/9	4:30-5:00pm	\$97/\$107
22170-A2	W	10/16-11/20	4:30-5:00pm	\$97/\$107

Classic Ages 4-5

Activity	Day	Date	Time	R/NR
22170-A3	W	9/4-10/9	5:10-5:55pm	\$97/\$107
22170-A4	W	10/16-11/20	5:10-5:55pm	\$97/\$107

Premier Ages 6-9

Activity	Day	Date	Time	R/NR
22170-A5	W	9/4-10/9	6:05-6:50pm	\$97/\$107
22170-A6	W	10/16-11/20	6:05-6:50pm	\$97/\$107

Tennis

Ages 5-13

Countryview/Royal Meadows Park

Instructed By: Mary Catherine Ryan



Come join us, whether you are a beginner or an intermediate tennis player. Learn fundamental swings, enjoy plenty of games, and experience freedom on the court! Don't forget to bring your racket!

Ages 5-8

Activity	Day	Date	Time	R/NR
25530-A1	M	9/9-9/30	4:30-5:15pm	\$82/\$92

Ages 9-13

Activity	Day	Date	Time	R/NR
25530-A2	M	9/9-9/30	5:30-6:20pm	\$82/\$92

Game Day Sports!

Ages 7-12

Spencer Trail School Gymnasium (Entry N)

Every day is Game Day! Each class will start with warm up drills that will teach the fundamentals. The remaining time will consist of scrimmages and games. This class offers a great experience for players to improve on their current skills and to learn new ones. Then, they will have the opportunity to translate these skills into a game format. This class offers 60 minutes of nonstop fun!

Basketball Game Day!

Activity	Day	Date	Time	R/NR
20193-A1	W	10/2-10/23	7:00-8:00pm	\$60/\$70

Floor Hockey Game Day!

Activity	Day	Date	Time	R/NR
20193-A3	W	10/30-11/20	7:00-8:00pm	\$60/\$70



Children's Basketball League

Grades 1-8 (2024-2025 School Year)

Children will learn the basic skills of basketball along with offensive and defensive strategies within this recreational basketball league. Teamwork and good sportsmanship will be emphasized to promote quality enjoyment. Players of all levels are encouraged to participate in this high-energy league. Whether your child is new to the game or looking to improve their basketball skills, this program is the perfect way to have fun playing hoops!

Volunteer Information:

- **There is volunteer fee of \$15 per household NOT per player.**
- Each family will be required to volunteer for at least one hour during the season. When this has been completed, you will receive a \$15 credit to your Park District household account.
- When registering online, one Parent/Guardian must be enrolled in the Volunteer Fee. This fee must be in your cart prior to enrolling your child for the league.

League Information:

- Due to the number of players that we have in the league team/player requests will not be honored! Please respect this rule and do not call or email the league supervisor.
- Games are on Sundays, beginning December 1, 2024, and ending Sunday, February 2, 2025 (Skip 12/22, 12/29).
- Early start times and Saturday games may be scheduled if needed for make-up.
- Games are held at Lincoln-Way West High School
- Teams are scheduled to practice once a week, starting in early November.
- Practice days for each division are determined by your coach and facility availability.
- Practice skip days may be rescheduled to an alternative day of the week based on availability; they are not guaranteed.

Coaching Information:

This league cannot run without volunteer coaches, we genuinely appreciate you volunteering your time!

- Coaches may request to co-coach with ONE other person.
- Do Not Request more than one coach, your request will NOT be honored.
- Coach's packets: fill out all documents completely, please submit all forms ASAP!
 - Visit our website to print out the coaches' packet.
 - Email forms to basketball@newlenoxparks.org or drop off at the Administration office at 701 W Haven Ave.
- There will be a mandatory coaches' Zoom meeting, date TBA.
- The Program Supervisor will use email as the main source of communication, please make sure your email is correct and legible on all documents.

Last day to register to receive a \$50 discount

per player is Monday, September 9.

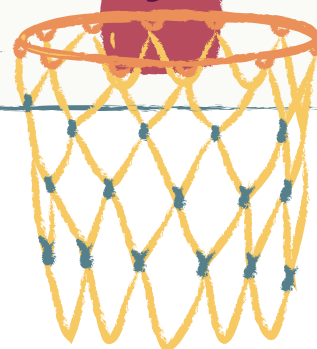
Registration ends October 14.



Fee: \$215/LWR • \$240/NR (Fee includes jersey)
28332-A1 Volunteer Fee \$15 R/NR

Activity	Division	Grades
28330-A1	Co-Ed Pee-Wee	1-2
28330-A2	Boys' Youth	3-4
28330-A3	Boys' Junior	5-6
28330-A4	Boys' Teen	7-8
28331-A2	Girls' Youth	3-4
28331-A3	Girls' Junior	5-6
28331-A4	Girls' Teen	7-8

**Last day to register to
receive a \$50 discount
per player is
Monday, Sept. 9**



Children & Teen Athletics

Lincoln-Way Field House: Drop-In Open Gym

All Ages

Grab your friends and come play at the Lincoln-Way West or Lincoln-Way Central Field House! Come play basketball at Lincoln-Way West or Pickleball, Badminton, or Volleyball at Lincoln-Way Central Field House. Children under 11 need adult supervision and a signed Parent Permission Slip, while those aged 12-17 can be dropped off with a signed Parent Permission Slip. Adults 18+ require a valid ID for entry. Payment is cash only at the door.

Activity LWR/NR
27299-A1 \$10/\$20

Skip Day Information

- Scan the code for the Lincoln-way Field House and Fitness Center monthly schedules.
- The Field House hours may end earlier due to lack of attendance.
- Due to circumstances beyond our control, additional skip days may be added. These dates will be posted as we are notified.



Drop-In Teen Open Basketball

Ages 12-17

Lincoln-Way West High School Field House

Get your friends together and enjoy a fun night with an open court! Pay at the door. To participate, a signed Parent Permission Slip must be completely filled out and turned in to the Field House Staff. Patrons 18 and older must follow drop-in procedures and show a valid picture ID.

Activity	Day	Date	Time	LWR/NR
25531-A1	F	9/6-12/13	6:00-9:00pm	\$10/\$20

Skip Day Information

- Scan the code for the Lincoln-way Field House and Fitness Center monthly schedules.
- The Field House hours may end earlier due to lack of attendance.
- Due to circumstances beyond our control, additional skip days may be added. These dates will be posted as we are notified.



COME AND JOIN US FOR A
FUN AND SPOOKTACULAR



All Ages (An adult must stay)

Haines Wayside Park

Thursday, October 24

5:30-7:00pm

**Registration deadline is
Monday, October 21.**

See page 38 for more details!

NEW LENOX COMMUNITY PARK DISTRICT

Presents

The Ice Skating Rink During Christmas in the Commons



Visit our website for more details
newlenoxparks.org

KIDDIE KAMPUS 2024-25

Ages 3-4 (as of 9/1/24)

What does Kiddie Kampus offer its participants?

The New Lenox Community Park District offers preschool classes designed to develop social, emotional, and physical skills to ensure school readiness. A child's separation from parents and involvement with a non-family member is one of many major steps towards their development. Kiddie Kampus provides a safe and supportive environment for your child's first school experience while increasing their self-esteem and confidence through age-appropriate instruction. Covered during the year are color, shape and number recognition, an introduction to number concepts and letter recognition. Your child's quest for learning will be nurtured through creative play, building friendships, working individually, and cooperating as part of a group. These activities promote patience, sharing and the awareness that there is a whole world of people surrounding and supporting them. Songs, stories, activities, and games are used for reinforcement and fun.

Thank you to our Sponsor

Burns Photography

What requirements are necessary for Kiddie Kampus registration?

A child must be four (three for the 3-year-old program), on or before September 1, 2024. Children must meet the age requirements of a class. Noncompliance with age requirements can result in removal from the program. The Recreation Department reserves the right to request a birth certificate if the age of the child is in question. If a child is not the appropriate age for a class, he/she will be dropped from the program.

****Kiddie Kampus follows New Lenox School District 122's calendar year for all full days off except for our Winter Break. Kiddie Kampus is still in session when there is a half-day for New Lenox School District 122.**

Meet & Greet Days

Thursday, September 5 & Friday, September 6

Classes begin the week of
September 9, 2024 - May 16, 2025

ACTV#	AGE	LOCATION	DAYS	TIME	R/NR FULL PAYMENT	R/NR MONTHLY TUITION
64001-A1	4	Room 3	M/W/F	9:15am-11:30am	\$1,296/\$1,746	\$144/\$194
64002-A1	4	Room 3	M/W/F	12:30pm-2:45pm	\$1,296/\$1,746	\$144/\$194
64003-A1	4	Room 3	TU/TH	9:15am-11:30am	\$1008/\$1,323	\$112/\$147
64004-A1	4	Room 3	TU/TH	12:30pm-2:45pm	\$1008/\$1,323	\$112/\$147
64005-A1	4	Room 5	M/W/F	9:15am-11:30am	\$1,296/\$1,746	\$144/\$194
64006-A1*	4½	Room 5	M/W/F	12:30pm-3:00pm	\$1,404/\$1,908	\$156/\$212
63001-A1	3	Room 4	M/W/F	9:15am-11:15am	\$1,179/\$1,575	\$131/\$175
63002-A1	3	Room 4	M/W/F	12:30pm-2:30pm	\$1,179/\$1,575	\$131/\$175
63003-A1	3	Room 5	TU/TH	9:15am-11:15am	\$918/\$1,188	\$102/\$132
63004-A1	3	Room 5	TU/TH	12:30pm-2:30pm	\$918/\$1,188	\$102/\$132
63005-A1	3	Room 4	TU/TH	9:15am-11:15am	\$918/\$1,188	\$102/\$132
63006-A1**	3-4	Room 4	TU/TH	11:30am-1:15pm	\$846/\$1,089	\$94/\$121

*Finally Five 2024/2025

Age 4½ (Child must be turning five between 9/1/24-12/31/24)
LCC (Room 5)

This Kiddie Kampus class is designed to benefit our older preschool children who just missed the kindergarten cut-off. We have created a class geared towards the older learners. This class will meet Monday, Wednesday, and Friday for two and a half hours per day.

**Tues./Thurs. Extended Day 2024/2025

Ages 3-4
LCC (Room 4)

This program provides a secure and caring environment that fosters growth in verbal development, small/large motor skills and social skills. This program is specifically created to serve the Tuesday/Thursday preschoolers to extend their day, so they receive as many academic hours as their three-day-a-week counterparts in a two-day school week.



Lunch Bucket Pals

Ages 3-4

LCC (Room 2) Entry E

Are you hungry for some friends and fun? When lunch is over, let the fun begin! This program allows for an extra hour of play time when tied into our Kiddie Kampus Program. We'll focus on gross motor skills and offer a variety of activities. All participants need to bring a bag lunch and drink with their name on it.

Age 3

Activity	Day	Date	Time	R/NR	Skip Date
20009-A1	M/W/F	9/9-12/6	11:15am-12:15pm	\$209/\$219	10/14 11/25-11/29

Age 4

Activity	Day	Date	Time	R/NR	Skip Dates
20010-A1	M/W/F	9/9-12/6	11:30am-12:15pm	\$177/\$187	10/14 11/25-11/29

Preschool Plus

Ages 3-4

LCC (Room 4) Entry E

Is your child ready for a more advanced preschool program? Preschool Plus, taught by a certified Preschool educator, is designed as an enrichment to our preschool experience by adding an extra challenge for students who are ready to take the next step. Your child will benefit from a curriculum strong in accelerated projects and fine and gross motor skills development. All participants need to bring a bag lunch and drink with their name on it.

Age 3

Activity	Day	Date	Time	R/NR	Skip Dates
20017-A1	M/W/F	9/9-12/6	11:15am-12:15pm	\$209/\$219	10/14 11/25-11/29

Age 4

Activity	Day	Date	Time	R/NR	Skip Dates
20018-A1	M/W/F	9/9-12/6	11:30am-12:15pm	\$177/187	10/14 11/25-11/29



Let us host your

Birthday

ATHLETIC AND POOL PARTIES OPTIONS

Lincoln-Way Central Field House

Availability

Fridays: 6:00-9:00pm

Saturday: 1:00-4:00pm

Sunday: 9:00am-2:00pm

Fee:

\$76/LWR • \$91/NR per hour of Gym space

\$36/LWR • \$51/NR per hour to utilize Lobby space

Lincoln-Way Central Pool Availability

Sunday

11:00am-Noon

Noon-1:00pm

1:00-2:00pm

2:00-3:00pm

Fee:

\$350/LWR • \$365/NR per hour

(Fee includes lifeguards and LW rental fee)

\$43/LWR • \$58/NR per hour for balcony rental

**Please call the Administration Building at
(815) 485-3584 for more information.**



GYMNASTICS & CHEERLEADING

FlipStar Gymnastics Academy Classes

1906 Ferro Drive, New Lenox, IL 60451



Parent Tot

Ages 2-3½



This is an interactive class between parent and child, where the child will develop physically and socially. During the class, parents will assist the child as they work through a circuit of gymnastic skills on equipment designed for their tiny bodies. Warm-up activities, balance, climbing, swinging and jumping are a few of the activities your little one will enjoy.

Activity	Day	Date	Time	R/NR
27360-A1	TU	9/3-10/29	9:00-9:45am	\$121/\$131
27360-A2	TU	11/5-12/17	9:00-9:45am	\$121/\$131

Preschool Gym

Ages 3½-5

The structure of this class will expose young gymnasts to basic gymnastics skills while building confidence, independence and learning skills. For most young gymnasts, this is their first experience without supervision. The one-hour class will follow a circuit format while learning skills such as rolls, cartwheels, strength and flexibility. Coaches are patient and correct with positive reinforcement.

Activity	Day	Date	Time	R/NR
27361-A1	W	9/4-10/30	9:00-9:55am	\$146/\$156
27361-A2	W	11/6-12/18	9:00-9:55am	\$146/\$156

Kinder Gym

Ages 5-6

This class will expose young gymnasts to basic gymnastics skills while building confidence, independence and learning skills in a faster paced environment than the preschool gymnastics. This one-hour class will follow circuit format while learning skills such as rolls, cartwheels, backbends, pullovers, round offs, basic balance beam skills, strength skills and flexibility. Our coaches are patient and correct with positive reinforcement.

Activity	Day	Date	Time	R/NR
27362-A1	M	9/9-10/28	9:00-9:55am	\$146/\$156
27362-A2	M	11/4-12/16	9:00-9:55am	\$146/\$156

Recommended program attire for girls includes a leotard with any long hair tied back. For boys, a T-shirt and shorts. No gym shoes, jeans, jewelry or tights.



Ignite Cheerleading

Ages 4-14

LCC (Room 1) Entry C



The Ignite Cheerleading program is designed to provide a fantastic introduction to the world of cheerleading for your athlete. Join us and watch your athlete develop level-appropriate skills in cheers, dance, jumps, motions, and beginner stunts. Our 55-minute classes are held once a week, allowing athletes to learn and have fun in a structured environment. Our experienced coaches follow a detailed lesson plan to ensure that every student receives personalized attention and progresses at their own pace. The highlight of each session is the final class, where students showcase everything they have learned. It's a moment of pride and accomplishment for both athletes and their families. Participation in the Ignite In-House Recreational Competition is optional but highly encouraged. If your athlete chooses to compete, there is a \$55 competition fee, a \$165 uniform fee, and athletes can use the same uniform until they outgrow it, typically lasting up to two years. To provide you with all the necessary information, one week prior to the first class, Ignite will send you a welcome email. This email will explain the additional costs for competition, uniform requirements, practice expectations, and provide instructions on how to register for their roster. Join Ignite Cheerleading Program and let your athlete experience the excitement and camaraderie of cheerleading while building essential skills and confidence. We look forward to having your athlete as part of our team! Registration deadline is Thursday, September 5.

Ages 4-6

Activity	Day	Date	Time	R/NR
24590-A1	M	9/9-12/9	6:00-6:55pm	\$191/\$201

Ages 7-9.5

Activity	Day	Date	Time	R/NR
24590-A2	M	9/9-12/9	7:00-7:55pm	\$191/\$201

Ages 9.5-14

Activity	Day	Date	Time	R/NR
24590-A3	M	9/9-12/9	8:00-8:55pm	\$191/\$201

New Lenox Community Park District's Dynamic Dancers Instructed by: Jill Rector



Pre-Ballet

Ages 3-4
LCC (Room 2) Entry C



An introduction to basic steps and positions. Your child will use their imagination while also improving strength, range of motion, coordination, and flexibility.

Activity	Day	Date	Time	R/NR	Skip Dates
28001-A1	M	9/11-11/25	4:00-4:30pm	\$127/\$137	11/4

Ballet & Tap Combo

Ages 4-7
LCC (Room 2) Entry C



Dance principles of ballet and tap are introduced in a playful, creative manner while ensuring proper skill development. Students will enjoy the gracefulness of ballet and quick-paced and entertaining sounds of tap. Taking a combination class will maximize the benefits for dancers.

Activity	Day	Date	Time	R/NR	Skip Dates
----------	-----	------	------	------	------------

Ages 4-6					
28021-A1	M	9/9-11/25	4:30-5:15pm	\$159/\$169	11/4

Ages 4-5					
28021-A2	TU	9/10-11/26	4:00-4:45pm	\$159/\$169	11/5

Ages 6-7					
28021-A3	TU	9/12-11/26	4:45-5:30pm	\$159/\$169	11/5

Ballet & Jazz Combo

Ages 7-9
LCC (Room 2) Entry C



This class is an exciting and challenging class that covers the basics and works the disciplines of ballet while incorporating the fun and upbeat feel of stylized jazz and hip hop. The latest and up to date dance moves will be taught.

Activity	Day	Date	Time	R/NR	Skip Dates
28002-A1	M	9/11-11/25	5:15-6:00pm	\$159/\$169	11/4

Dancers are required to wear a leotard, tights, pink ballet shoes and black tap shoes (easy on Velcro closure preferred for ages 4-6). Black jazz shoes are optional. To preserve our floors, kindly wait until you're in Room 2 before wearing tap or jazz shoes.

Ballet, Tap & Jazz Combo

Ages 8-9
LCC (Room 2) Entry C



This combination class will build on foundational skills of ballet, the styles of tap, and upbeat, fast paced movement of jazz to help with coordination, flexibility and musicality. Fun dance routines and up to date music make kids excited to come back week to week.

Activity	Day	Date	Time	R/NR	Skip Dates
28003-A1	TU	9/10-11/26	5:30-6:15pm	\$159/\$169	11/5

Experienced Ballet

Ages 10 & up
LCC (Room 2) Entry C



Come enjoy the excitement and beauty of classical ballet! This class will focus on ballet terminology and technique through the execution of barre work, center and across the floor exercises. Your child will have a clear understanding of body alignment, movement quality, carriage of upper body and flexibility.

Activity	Day	Date	Time	R/NR	Skip Dates
28024-A1	TU	9/10-11/26	6:15-7:00pm	\$159/\$169	11/5

Experienced Tap

Ages 10 & up
LCC (Room 2) Entry C



Tap dancers have the unique opportunity to be musicians and dancers at the same time. This class will teach musicality and rhythm skills through tap technique and combinations. This is a fun and energetic class that will have your feet moving! Dancers are required to wear leotard, tights or leggings and black jazz style tap shoes preferred.

Activity	Day	Date	Time	R/NR	Skip Dates
28025-A1	TU	9/10-11/26	7:00-7:30pm	\$127/\$137	11/5

Hip Hop

Ages 10 & up
LCC (Room 2) Entry C



This class is a basic introduction to hip hop and jazz funk style dance. The class will include hip hop technique and choreography, and of course freestyle improvisation! We will have a blast dancing to age appropriate music and learn moves every dancer will enjoy. Dancers are required to wear workout attire and black jazz shoes.

Activity	Day	Date	Time	R/NR	Skip Dates
28026-A1	M	9/9-11/25	6:00-6:45pm	\$159/\$169	11/4

SPECIAL EVENTS

Friends of the Parks “Empty Bowls”

All Ages

New Lenox Village Commons



Our annual event will be held during the Village of New Lenox’s “Last Call Before Fall.” Come pick your favorite hand-painted bowl and receive unlimited soup tastings (while supplies last) from local restaurants. Visit nlfop.square.site to purchase tickets in advance! Net proceeds will benefit the New Lenox Township Food Pantry

Day	Date	Time	R/NR
SA	9/21	1:00-5:00pm	\$20, Day of the Event

Boo Bash

Ages 5-8

LCC (Room 2) Entry C

Show off your most spooktacular costume as you dive into a cauldron of Halloween activities, thrilling games, and a craft that will send shivers down your spine. But wait, there's more! A scrumptious pizza dinner awaits to fuel your adventures. And don't forget to grab your treat bag filled with goodies for the journey home. Let's make this Halloween a howling ghoul of a time.

Registration deadline is Friday, October 4.

Activity	Day	Date	Time	R/NR
24122-A1	F	10/11	6:00-7:30pm	\$24

Big Bad Pumpkin Party

All Ages (An adult must stay)

Walker Country Estates Park



Join us for a day filled with thrills and chills at the Big Bad Pumpkin Party! It's an event for everyone in the community to enjoy. We're brewing up a cauldron of fun with children's activities galore. Get ready to showcase your spookiest attire in our costume contest. Open to three age groups: 1-4 years, 5-8 years, and 9-12 years. But beware, the last hayrack ride departs promptly at 11:45 am. No exceptions!

Day	Date	Time
SU	10/20	10:00am-Noon

Halloweenie Roast

All Ages (Adult must stay)

Haines Wayside Park



We will gather 'round the fire for some fall festivities and delicious treats! Come and enjoy the cozy atmosphere around the campfire as we roast hot dogs and s'mores with friends and neighbors. Don't forget to bring your own chairs and blankets, and we'll handle the rest.

Registration deadline is Monday, October 21.

Activity	Day	Date	Time	R/NR
29192-A1	TH	10/24	5:30-7:00pm	\$18/family



LENNAR

Find a Home You'll Love at Calistoga



Lennar, one of the nation's leading homebuilders, is excited to debut our newest single-family community! Here at Calistoga, residents are just half a mile from Metra station and have quick access to I-80, Route 45, and Route 52, for easy commuting into Chicago.

- 6 popular floorplans varying from 1,866 sq ft up to 3,146 sq ft
- Masonry-wrapped exterior
- Quartz countertops and more!



Scan here to learn more

585 Caledonia Drive, New Lenox, IL | 224.293.3126 | Lennar.com | LennarChicago@lennar.com

Features, amenities, floor plans, elevations, and designs vary and are subject to changes or substitution without notice. Items shown are artist's renderings and may contain options that are not standard on all models or not included in the purchase price. Availability may vary. Sq. ft. is estimated; actual sq. ft. will differ. This is not an offer in states where prior registration is required. Void where prohibited by law. Copyright © 2024 Lennar Corporation. Lennar and the Lennar logo are U.S. registered service marks or service marks of Lennar Corporation and/or its subsidiaries. Date 03/24

Daddy/Daughter Date Night

Age 3 and Older

LCC (Room 1 & 2) Entry C

Toto, I don't think we're in New Lenox anymore... Get your ruby slippers and follow the yellow brick road, over the rainbow to our annual Daddy Daughter Date night in the Emerald City. Our Wizard of Oz themed evening will have music, a light dinner and lots of fun!

Registration deadline is Friday, October 18. Additional child(ren) will be \$20 R/NR. At time of registration, you will only register your daughter(s), we know Daddy will be in attendance.

Activity	Day	Date	Time	R/NR
27383-A1	F	11/1	6:00-8:00pm	\$54/pair



Gobbler Gauntlet 5K

Age 7 & Older

Sanctuary Golf Course

Dash your way to the finish line. The terrain of the race/walk is mostly flat with a few rolling hills. The route will have a water station and an electronically timed finish line. All participants will receive one complimentary drink in the clubhouse upon finishing the race. Medals will be

awarded to the 1st and 2nd place finishers in each age category such as top male and female finishers as well as male and female winners from New Lenox. All net proceeds benefit the NLCPD Scholarship Program.

If registered by Monday, October 28, participants are guaranteed a race shirt. Race Day Walk-up registration begins at 7:00am.

Activity	Day	Date	Time	R/NR
27203-A1	SA	11/16	8:00am	\$35, Mail/Fax/Walk-in by 11/13 \$35, Online until 5:00pm, 11/15 \$45, Race Day Walk-up



Jolly Jamboree

Ages 5-8

LCC (Room 2) Entry C

Embrace the joy of the holiday season and join us for a festive gathering with fellow kids from your community! Experience the magic of Christmas with an array of holiday-themed activities, games, and a delightful craft to bring home. And to keep your spirits merry and bright, we'll provide a scrumptious pizza dinner for everyone to enjoy.

Registration deadline is Monday, November 25.

Activity	Day	Date	Time	R/NR
27671-A1	F	12/6	6:00-7:30pm	\$24



Noon Year's Eve Party

All Ages

New Lenox Village Commons, Ice Rink



Can't make it until midnight? Celebrate the "Noon Year" instead! Join the free party and help us countdown to noon. Music, crafts, and activities will be provided. We cap off the event with a massive balloon drop. Skate rentals will be available.

Day	Date	Time
F	12/27	11:30am-12:30pm

POOL & ATHLETIC RENTALS



Athletic Birthday Parties

All Ages (Must be 21 to rent)

Lincoln-Way Central High School Field House

We offer Field House court rentals at Lincoln-Way Central to host your next event. Some equipment available for parties includes basketball, floor hockey, T-ball, soccer and much more. Party area (lobby) for eating and opening presents is available for an additional charge. For available dates and to schedule your party, please call the Park District Administration Building at (815) 485-3584.

Day	Time
F	6:00-9:00pm
SA	1:00-4:00pm
SU	9:00am-2:00pm

Fee: \$76/LWR • \$91/NR per hour of Gym space
\$36/LWR • \$51/NR per hour to utilize Lobby space

Court Rental

All Ages (Must be 21 to rent)

Looking to get extra practice for your team or reserve an entire court for a group of friends? Courts are available at the Field House of Lincoln-Way West and Lincoln-Way Central. For available dates and to schedule your rental, please call the Administration Building at (815) 485-3584.

Activity	Day	Time	LWR/NR
27140-A1	M, W-F	6:00-9:00pm	\$57/\$82 per hour
	SA	1:00-4:00pm	
	SU	9:00am-1:00pm	

Pool Party Rentals

All Ages (Must be 21 to rent)

Lincoln-Way Central High School Aquatic Center

We offer pool party rentals at Lincoln-Way Central High School's Aquatic Center to celebrate your next occasion. A choice must be made for either the shallow or deep end of the pool or both for an additional fee. The upper level (balcony area) may also be rented for one hour. For availability call the Park District at (815) 485-3584.

Sunday

11:00am-Noon

Noon-1:00pm

1:00-2:00pm

2:00-3:00pm

Fee: \$350/LWR • \$365/NR per hour
(Fee includes lifeguards and LW rental fee)
\$43/LWR • \$58/NR per hour for balcony rental

Batting Cage Rental

All Ages (Must be 21 to rent)

Lincoln-Way Central High School Field House



The batting cages are open to the public for individuals and teams to work on hitting and pitching. Participants must provide their own equipment for the rental. Limit of two batters in cage at a time. The adjacent court may be used for throwing and catching ONLY. For available dates and to schedule your rental, please call the Administration Building at (815) 485-3584.

Activity	LWR/NR
27140-A1	\$57/\$82 per hour





We do not show our rental facilities if the room is currently occupied. Therefore, we suggest you call ahead prior to requesting to view the facilities.

To connect to our WiFi network at the Administration Building and Lions Community Center, choose the network named 'NLCPDpub' and use the password 'WPA#public842'.

ROOM RENTALS

Rentals are available to both New Lenox residents and nonresidents. Participants can bring their own food and beverages. However, alcohol is not permitted.

- Room 1: Holds up to 130 people (\$100/hour)
- Room 2: Holds up to 50 people (\$80/hour)
- Rooms 1 & 2: Holds 180 people w/o dance area (\$125/hour)
- Bi-Centennial Room: Holds up to 50 people (\$80/hour)
- All-Purpose Room: Holds up to 60 people (\$100/hour)

A \$250 security deposit is required to reserve your date. Each room rental is required to pay a set-up and tear-down fee of \$30. (If renting LCC Rooms 1 & 2, the fee will be \$55.)

Nonresident Fee: Additional \$50 will be added to the total cost of the Room Rental.

BANQUET RENTALS

Beverages and alcohol must be provided by our own bar. To have the bar, the banquet will need to have a minimum of 50 guests. Rentals must be made 14 days in advance and a \$250 security deposit is required to reserve your date. Full payment and layout are due 14 days prior to event. We offer six banquet packages for you to choose from and the choice of your own caterer.

Package No.	Duration	Package Includes
1	4 hrs*	<ul style="list-style-type: none"> • \$100/hr Banquet Hall Rental • Minimum of 50 guests • Cash Bar (\$250 minimum)
2	4 hrs*	<ul style="list-style-type: none"> • \$100/hr Banquet Hall Rental • Minimum of 50 guests • \$5/person pop only • Cash Bar (\$250 minimum)
3	4 hrs*	<ul style="list-style-type: none"> • \$100/hr Banquet Hall Rental • Minimum of 50 guests • Cash Bar (\$250 minimum) (Tab paid at conclusion of event)
4	5 hrs	<ul style="list-style-type: none"> • \$16/person (Age 5 & under free) • Minimum of 100 guests (Ages 5 and under not included in min.) • Beer, wine and pop • Cash Bar for mixed drinks • Bar closes for an hour during dinner
5	5 hrs	<ul style="list-style-type: none"> • \$24/person (Age 5 & under free) • Minimum of 100 guests (Age 5 and under not included in min.) • Full Bar • Bar Closes for an hour during dinner
6 (Room 2 Only)	3 hrs min	<ul style="list-style-type: none"> • \$75/hr Banquet Hall Rental • Maximum of 50 guests • Cash Bar (\$150 min.) or Customized Bar Tab

PARK SHELTER RENTALS

Are you looking for a wonderful and affordable way to host your next outdoor celebration?

The New Lenox Community Park District offers shelter rentals at several park sites, all of which are developed with playground equipment! Residents and nonresidents can rent the Park Shelters shown below.

Rentals Began on Tuesday, January 2, 2024.

Park Shelter Rental costs include use of electric and shelter rental. Please remember that these are public parks and open space will remain open to the public. In order to be approved to bring in an inflatable (no water inflatables allowed; for a full list of prohibited items please visit newlenoxparks.org) onto Park District property; you MUST supply a Certificate of Insurance (COI) by Operating Vendor with a \$1,000,000.00 policy; naming the New Lenox Community Park District as additional insured with 701 W. Haven Avenue, New Lenox, IL 60451 as the address and include a copy of the vendor's permit to conduct business. Once the COI and Business Permit is received the renter will be allowed to have the inflatable on Park District property; this MUST be supplied prior to your event. These documents may be mailed to the Park District address above or faxed to (815) 485-3589 with ATTN: Park Rentals.

- Park Rentals are available from Apr. 15-Oct. 31
- Hours of Operation: 9:00am-8:00pm
- All parks are ADA accessible

*A security deposit of \$250 and rental fee is required for all Park Shelter Rentals at time of reservation.

Cancellation policy within the 14-day period prior to the rental date:

- 8-14 days prior: Security deposit is retained. The rest will be refunded within a period of 30 days.
- 7 days or less: Security deposit plus 50% of the rental fees will be retained. The other 50% will be refunded to the signee within a period of 30 days.

Park Shelters Available to Rent:

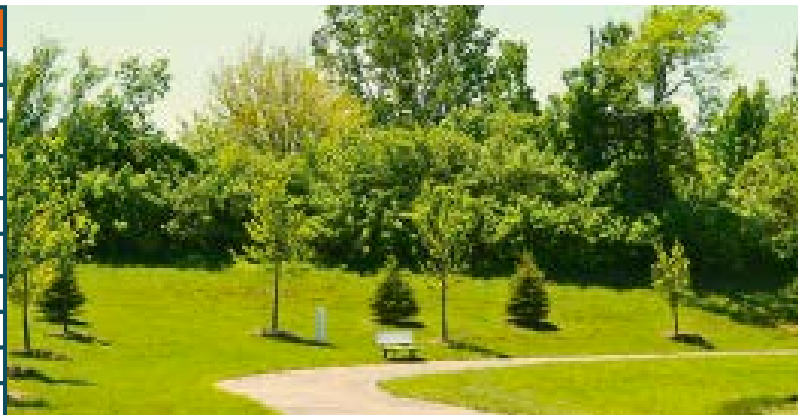


Park Name	Location	Shelter size/Seating
Cherry Hill (No alcohol or inflatables)	205 Kingston Dr.	24 ft. x 36 ft. / Seating for 32
Firefighters	1 Manor Drive	30 ft. x 60 ft. / Seating for 64
Haines Wayside	184 Haines Avenue	30 ft. x 60 ft. / Seating for 80
Hibernia (No alcohol or inflatables)	1598 Eagle Circle	20 ft. x 20 ft. / Seating for 16
Leigh Creek South (Available after June 5) (no alcohol or inflatables)	2400 Knightsbridge Lane	24 ft. x 36 ft. / Seating for 40
Sharon's Bay	805 Westwind Drive	24 ft. x 36 ft. / Seating for 40
Stonebridge (After 2:00pm on weekends)	1601 Nelson Road / 1802 Stonebridge Dr	30 ft. x 55 ft. / Seating for 48
Wildflower	124 Cherry Hill Road	20 ft. x 20 ft. / Seating for 16
Resident: \$175 • Nonresident: \$225		

*A refundable security deposit of \$250 and rental fee is required for all Park Shelter Rentals at time of reservation.

Park Trail Guide:

Site	Distance	#laps/1mile
Bristol Park	.51 miles	2
Countryview/Royal Meadows Park	.52 miles	2
Freedom Park	.31 miles	3.5
Hibernia Park	.57 miles	2
Leigh Creek South Park	.30 miles	3.5
Lions Den Park	.29 miles	3.5
Palmer Valley Park	.35 miles	3
Sharon's Bay/Crystal Springs Parks	.42 miles	2.5
Sky Harbor Park	.28 miles	4
Walker Country Estates Park	.26 miles	4



PARK & FACILITY LOCATIONS

1. AEROHAVEN PARK

511 Glenn Drive

2. BENTLEY/TYLER

ATHLETIC FIELDS

Illinois Highway, East of Cedar Rd.

3. BRISTOL PARK

2178 Bristol Park Road

4. CHERRY HILL PARK

205 Kingston Dr.

5. CHESTNUT POINTE PARK

3037 Chestnut Pointe Dr

6. COUNTRYVIEW/ROYAL

MEADOWS PARK

2200 Jackson Branch Drive

2233 Daniel Lewis Drive

7. CRYSTAL SPRINGS PARK

2398 Bluestone Bay Drive

8. FIELDSTONE PARK

115 Wind Crest Lane

9. FIREFIGHTERS PARK

1 Manor Drive

10. FITNESS COURT

Haven Ave. & Gear Dr.

11. FREEDOM PARK

470 Charleston Drive

12. HAINES WAYSIDE PARK

184 Haines Avenue

13. HEATHER GLEN PARK

1900 Heather Glen Drive

14. HIBERNIA PARK

1598 Eagle Circle

15. HIGHLANDS PARK

1011 Flagstaff Lane

16. JACOB LOWELL PARK

1221 E. Illinois Highway

17. LAUREL MEADOWS PARK

629 E. Fourth Ave

18. LEIGH CREEK SOUTH

2400 Knightsbridge Lane

19. LIONS DEN PARK

520 S. Cedar Road

20. MARTINO JR. HIGH

ATHLETIC FIELDS

731 East Joliet Highway

21. NELSON CAMPUS PARK/FIELDS

Nelson and Laraway Roads

22. NEUFARFIELD PARK

2509 Saddle Ridge Ct

23. PALMER VALLEY PARK

2901 Tanaga Basin

24. PRAIRIE RIDGE PARK

15881 Pond View Street

25. RON ROB ATHLETIC FIELDS

881 Country Creek Drive

26. R.S. CORCORAN PARK/ VETS FIELD

560 Vine Street

27. SANCTUARY GOLF COURSE

485 North Marley Road

28. SCHOOLHOUSE MANOR PARK

1841 Cornell Drive

29. SHARON'S BAY PARK

805 Westwind Drive

30. SKY HARBOR PARK

2360 Alta Vista Drive

31. SPENCER CAMPUS

ATHLETIC FIELDS

Spencer Rd.; North of Laraway Rd.

32. SPENCER PARK

1099 S. Spencer Road

33. STONEBRIDGE PARK

1601 Nelson Road / 1802 Stonebridge Drive

34. TAYLOR GLEN PARK

2712 Northern Lights Way

35. THUNDER RIDGE PARK

3218 Apache Drive

36. WALONA PARK

200 Walona Avenue

37. WALKER COUNTRY ESTATES PARK

401 Lenox Street

38. WATERCHASE PARK

2185 Water Chase Drive

39. WILDFLOWER PARK

124 Cherry Hill Road

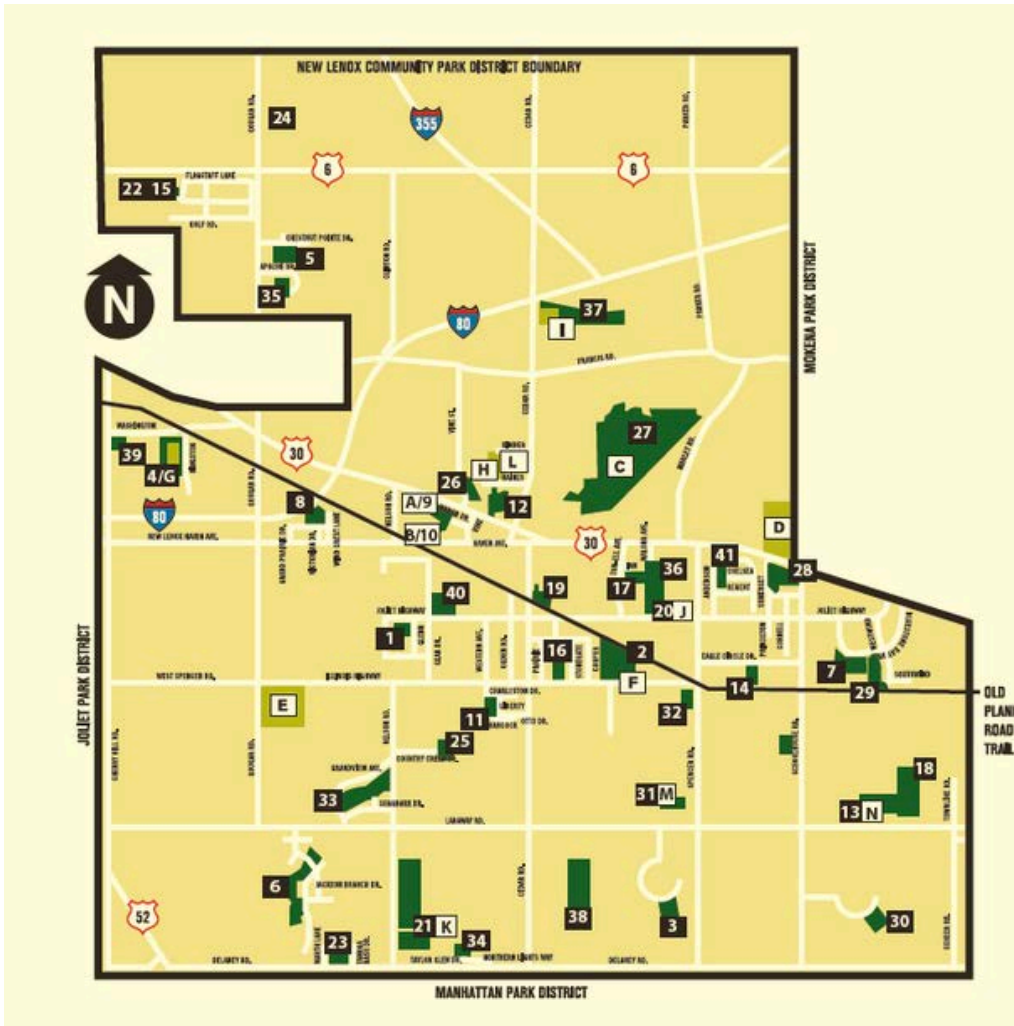
40. WILDWOOD PARK

605 W. Joliet Highway

41. WINDERMERE TOT LOT

911 Chelsea Court

Visit our [Interactive Map](#) for more park details



- A. Lions Community Center
- B. Administration Building
- C. Maintenance Facility
- D. Lincoln-Way Central H.S.
- E. Lincoln-Way West H.S.
- F. Bentley-Tyler Schools
- G. Cherry Hill School
- H. Haines School
- I. Liberty Jr. High School
- J. Martino Jr. High School
- K. Nelson Campus
- L. Oster-Oakview School
- M. Spencer Campus
- N. Lincolnway Special Recreation Association

PARK & FACILITY AMENITIES

		ACRES	SPECIAL REC. CTR.	ADA KAYAK LAUNCH	BASEBALL	SOFTBALL	BASKETBALL COURTS	CONSERVATION AREA	FISHING	FITNESS EQUIPMENT	FOOTBALL FIELDS	DISC GOLF	PUTTING GREEN	TURF COURT GAMES	ICE SKATING/SLEDDING	PARKING LOT	SHELTER	PLAYGROUND EQUIP.	WATER PLAY	SOCCER	SAND VOLLEYBALL	WALKING PATHS	TENNIS/PICKLE BALL	SKATEBOARDING	UNDEVELOPED
1	AEROHAVEN PARK	2.8																•							
2	BENTLEY/TYLER ATHLETIC FIELDS	30			•											•	•								
3	BRISTOL PARK	15.5														•		•				•			
4	CHERRY HILL PARK	5														•	•	•		•					
5	CHESTNUT POINTE PARK	1.1															•	•							
6	COUNTRYVIEW/ROYAL MEADOWS PK.	16.6						•								•	•	•				•	•	•	
7	CRYSTAL SPRINGS PARK	36						•	•					•		•	•	•				•			
8	FIELDSTONE PARK	5																•							
9	FIREFIGHTERS PARK	7.3														•	•	•							
10	FITNESS COURT	0.25								•															
11	FREEDOM PARK	7.7					•		•							•	•	•				•			
12	HAINES WAYSIDE PARK	10.75										•			•	•	•	•			•				
13	HEATHER GLEN PARK / LWSRA	5.5	•													•									
14	HIBERNIA PARK	13.4		•				•	•	•			•			•	•	•	•	•	•	•			
15	HIGHLANDS PARK	0.5															•	•							
16	JACOB LOWELL PARK	6			•	•	•									•	•	•							
17	LAUREL MEADOWS PARK	1.9				•																			
18	LEIGH CREEK SOUTH	3.5	•			•	•			•						•	•	•				•			
19	LIONS DEN PARK	10				•	•									•	•	•			•	•			
20	MARTINO JR. HIGH ATHLETIC FIELDS	11									•					•	•								
21	NELSON CAMPUS PARK/FIELDS	20.4					•		•							•	•	•		•					
22	NEUFAIRFIELD PARK	5										•					•	•							
23	PALMER VALLEY PARK	15.5				•	•		•							•	•	•				•			
24	PRAIRIE RIDGE PARK	2.5														•	•	•							
25	RON ROB ATHLETIC FIELDS	4.6				•										•									
26	R.S. CORCORAN PARK/VETS FIELD	4				•										•	•	•							
27	SANCTUARY GOLF COURSE	235						•								•	•								
28	SCHOOLHOUSE MANOR PARK	10						•							•	•	•	•				•			
29	SHARON'S BAY PARK	12.7				•		•	•							•	•	•			•	•			
30	SKY HARBOR PARK	4								•				•		•	•	•				•	•		
31	SPENCER CAMPUS ATHLETIC FIELDS	35							•							•		•		•					
32	SPENCER PARK	2					•									•	•	•							
33	STONEBRIDGE PARK	18.5				•										•	•	•		•					
34	TAYLOR GLEN PARK	3																•							
35	THUNDER RIDGE PARK	0.7															•	•							
36	WALONA PARK	7				•										•	•	•							
37	WALKER COUNTRY ESTATES PARK	12.9					•		•		•					•	•	•	•			•			
38	WATERCHASE PARK	3																							•
39	WILDFLOWER PARK	4.4														•	•	•			•	•			
40	WILDWOOD PARK	4					•									•	•	•			•				
41	WINDERMERE TOT LOT	0.75					•											•							



EMPTY BOWLS

Help Us Fight Hunger

September 21, 2024

During Last Call Before Fall

1:00-5:00pm

New Lenox Commons



**Entry Fee \$20
(surcharge added
for credit/debit)**

**Scan to purchase
tickets in advance**



**Sample unlimited soup from local restaurants &
support the New Lenox Food Pantry!**



701 W. Haven Avenue, New Lenox, IL 60451



Scan with your smartphone
to view online.

Gobbler Gauntlet 5k

Saturday, November 16

8:00am

Sanctuary
Golf Course

Register Today!

