

ANNUAL REPORT

2023



Our scope of work

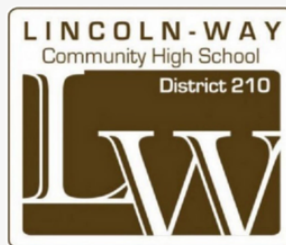
Established on May 9, 1969, the New Lenox Community Park District caters to the Village of New Lenox and unincorporated Will County. Encompassing approximately 32 square miles, the district abides by New Lenox Township's limits. It's situated one mile east of Joliet and 36 miles southwest of Chicago, with Homer Glen to the north, Manhattan to the south, and Mokena and Frankfort to the east. An estimated 68,000 residents benefit from the district's services.

QUALITY ~ VALUE COMMITMENT

The District is overseen by a Board of Commissioners consisting of five members, each elected at-large for a four-year term. The Board determines policies, approves the budget, assigns committees, and appoints the Executive Director. The Executive Director implements the Board's policies, manages the District's daily operations, and hires administrative staff.

Our Mission

“To provide safe recreational opportunities through diverse programs, facilities, and open space, with the overall goal being improvement of the quality of life in our community.”



Our mission is maintained and achieved by the positive and productive relationships garnered through intergovernmental agreements with New Lenox School District 122, Lincoln-Way Community High School District 210, Lincolnway Special Recreation, the Village of New Lenox, the New Lenox Lions Club, and Will County. This structure involving the sharing of facility space and athletic fields amongst schools, park districts, as well as athletic associations, is not one that is usually employed by other park districts. The New Lenox Community Park District is grateful for these positive relationships, for without them the number of quality programs and athletics offered to their patrons would be greatly diminished.

VALUE OF THE NEW LENOX COMMUNITY PARK DISTRICT

Our main goal at the New Lenox Community Park District is to provide exceptional value to our community. In line with that objective, we offer residents a plethora of amazing parks and facilities that contribute to the overall quality of life. Have a look at some of the highlights:

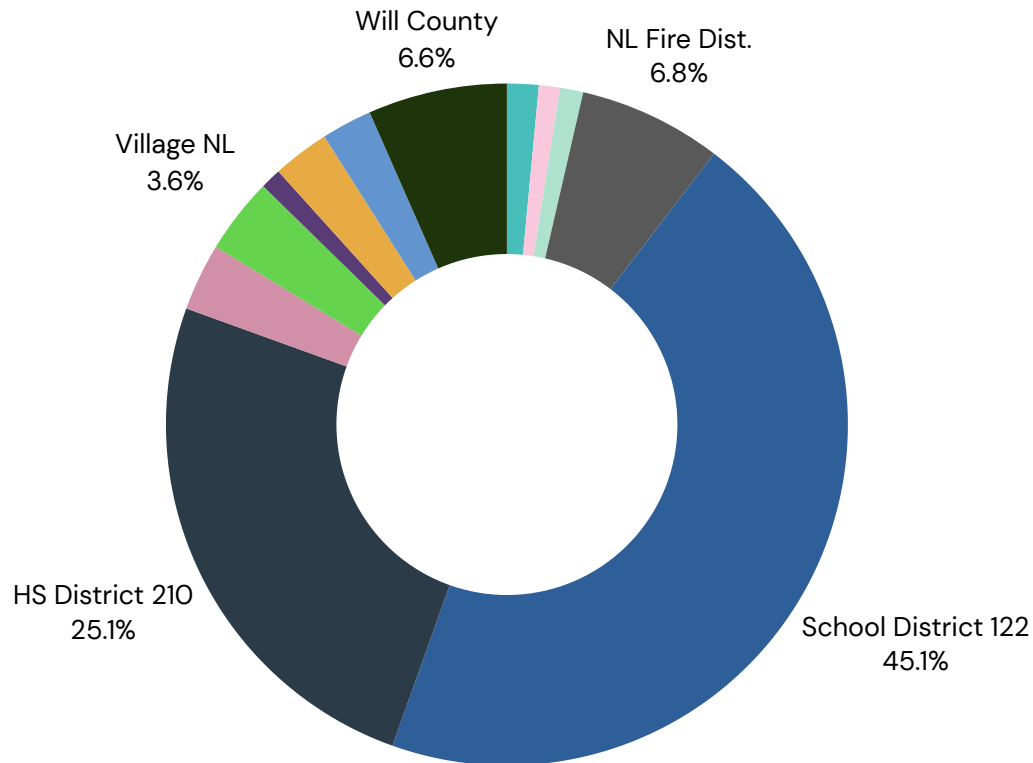
597 ACRES OF PARK LAND
38 PLAYGROUNDS **3.53 MILES OF PARK TRAILS**
39 PICNIC Shelters **2 SPLASH PADS**
1 18-HOLE GOLF COURSE
5 BUILDINGS **15 BASEBALL FIELDS**
11 FISHING PONDS **2 FRISBEE**
5 TURF COURT GAMES **GOLF COURSES**
14 SOFTBALL FIELDS **10 BASKETBALL COURTS**
1 SKATE BOARD PARK **21 Soccer Fields** **4 TENNIS AND/OR PICKLEBALL COURTS**



Your Tax Dollars

Understanding Your Property Tax Bill Breakdown

Did you know that your property tax bill is divided among several local government bodies that offer various services? It's worth noting that the New Lenox Community Park District accounts for less than 3% of a resident's total tax bill.



Taxing Body	Tax Rate	Percentage of Tax Bill
Forest Preserve	0.1339	1.5%
NL TWP Town Funds	0.0830	1%
NL TWP Road Funds	0.0977	1.1%
NL Fire District	0.5953	6.8%
School District 122	3.9546	45.1%
HS District 210	2.1986	25.1%
Community College District	0.2848	3.2%
Village of New Lenox	0.3133	3.6%
Village New Lenox RD & BR	0.0809	.99%
New Lenox Community Park District	0.2339	2.7%
New Lenox Public Library	0.2120	2.4%
Will County	0.5761	6.6%

Accomplishments and Capital Improvements

As of April 30, 2023, the District's government and business activities had invested \$26,815,699 (after deducting accumulated depreciation) in various capital assets such as land, construction in progress, park improvements, buildings and other infrastructure, machinery and equipment, and vehicles. In the fiscal year, the District acquired \$1,401,289 in new assets and incurred \$697,852 in depreciation expenses related to all assets.

- LED outdoor field lights for the boys baseball and girls softball complexes
- Closed out the work on Sky Harbor Park development project
- Began work on Hibernia Park Phase II project
- Exterior upgrades at the Golf Course, a new pump for the irrigation system and purchase of a fleet of Yamaha golf carts.
- Addition of two Ford F-250 Pickups and two Ford Interceptor vehicles





NEWLY DESIGNED

HAINES WAYSIDE PARK DISC GOLF COURSE

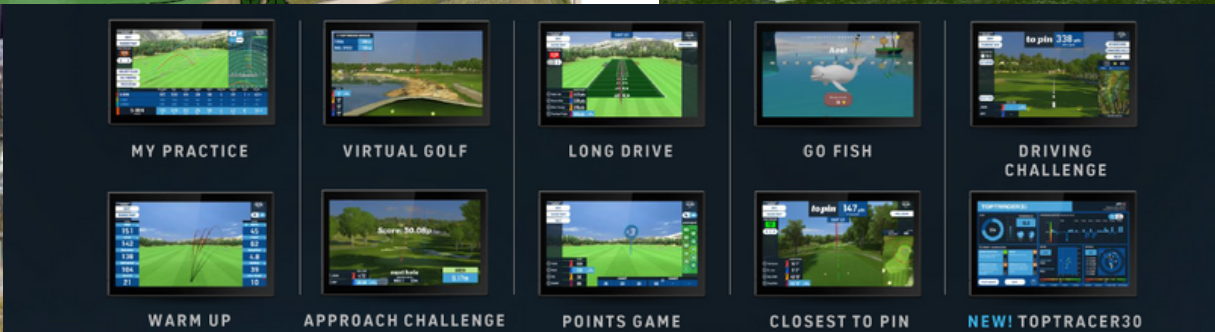
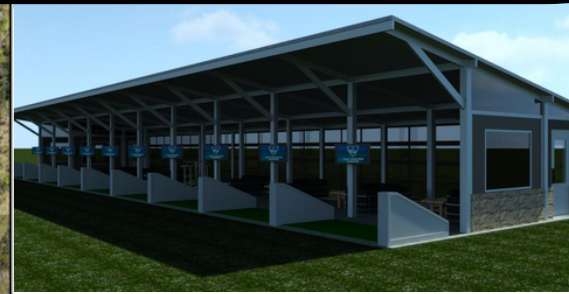
The Haines Wayside Park Disc Golf course, established in 1984, was redesigned in the Fall of 2022, thanks to course designers Dana Vicich with Discmania and Sean Callahan owner of Dellwood Disc Golf.

- 9 Holes (2 Tee Pads/2 holes)
- Concrete Tee Pads
- Mach V w/Trapper Basket 2, Mach V Targets
- Dogs Allowed on leashes
- Restroom Available (Seasonal)

Upcoming Initiatives

- **New tot lot playground at Bristol Park**
- **Replacement of the rubber surfacing at Freedom and Wildflower Playgrounds**
- **Updates to the sports surfaces and blacktop at Countryview/Royal Meadows Park.**
- **Completion of the Hibernia Park Phase II development, including an ADA accessible fishing pier.**
- **The District will continue to work on renovating parks that do not conform to the Americans with Disabilities Act.**





Coming January 2024

- Expanded grass driving range.
- New short game and putting green practice areas.
- 20-bay covered TopTracer Range with VIP area.






OSLAD Grants


HISTORY OF SUCCESS

Since 1980 the New Lenox Park District has teamed up with the State of Illinois through the Department of Natural Resources to preserve and develop over 164.1 acres of rapidly disappearing open space in Will County. The New Lenox Park District has been awarded \$6,552,675.00 to help complete \$11,949,265.00 in OSLAD and PARC development projects.


Recently Awarded OSLAD Grants




FY: 2019 *Leigh Creek South Park*
Project #OSLAD - OS-19-2030
Project Grant Amount-\$400,000.00
Project Total Amount: \$1,055,000.00
Acres Preserved-3.5



FY: 2020 *Sky Harbor Park*
Project #OSLAD - OS-20-2115
Project Grant Amount-\$400,000.00
Project Total Amount: \$1,031,526.00
Acres Preserved-4.0



FY: 2022 *Hibernia Park Phase II*
Project # OSLAD -OS-22-2210
Project Grant Amount - \$400,000.00
Project Total Amount: \$1,071,394.00
Acres Preserved - 13.4



FY: 2023 *Water Chase Park*
Project # OSLAD - OS-23-2313
Project Grant Amount - \$600,000.00
Project Total Amount: \$1,300,000.00
Acres Preserved - 3

**Construction Begins
Spring 2024**



Financial Highlights

.....

- The assets and deferred outflows of resources of the District exceeded its liabilities and deferred inflows of resources by \$28,206,147 at April 30, 2023.
- Total net position increased from \$27,738,661 to \$28,206,147 as a result of operations.
- Property taxes collected totaled \$3,500,862 compared to the prior year collections of \$3,398,544.
- In fiscal year ending April 30, 2023, \$883,715 was spent in the governmental funds on capital outlay for the District's improvements. Projects included work on the new parks at Sky Harbor and Hibernia as well as various upgrades at park locations.
- The District's outstanding general obligation debt was \$639,760 as of April 30, 2023. This reflects an addition of \$448,760 and the retirement of \$187,000 in debt.



AWARDS

Certificate of Achievement for Excellence

- The Government Finance Officers Association (GFOA) awards a Certificate of Achievement for Excellence in Financial Reporting to governmental entities who publish an easily readable and efficiently organized Annual Comprehensive Financial Report (ACFR). This report must satisfy both generally accepted accounting principles and applicable legal requirements.



Net Position

The District's net position is comprised of its net investment in capital assets (e.g., land, buildings, improvements, infrastructure, machinery and equipment, vehicles, and construction in progress, less any related debt used to acquire those assets that is still outstanding), restricted and unrestricted net position.

The District's total net position increased 1.69%, or \$467,486, to \$28,206,147

Governmental activities: Governmental activities increased the District's net position by \$359,924.



Key elements of the increase are as follows:

- Property taxes for governmental activities increased by 3% or \$102,318 to a total of \$3,500,862. The increase was due to a 6.8% increase in the overall assessed valuation.
- Operating contributions and grants increased substantially to a total of \$297,761. The District's Recreation Fund received a one-time donation of LED lighting for NLGSA and the New Lenox Rebels softball and baseball complexes, valued at \$294,261.

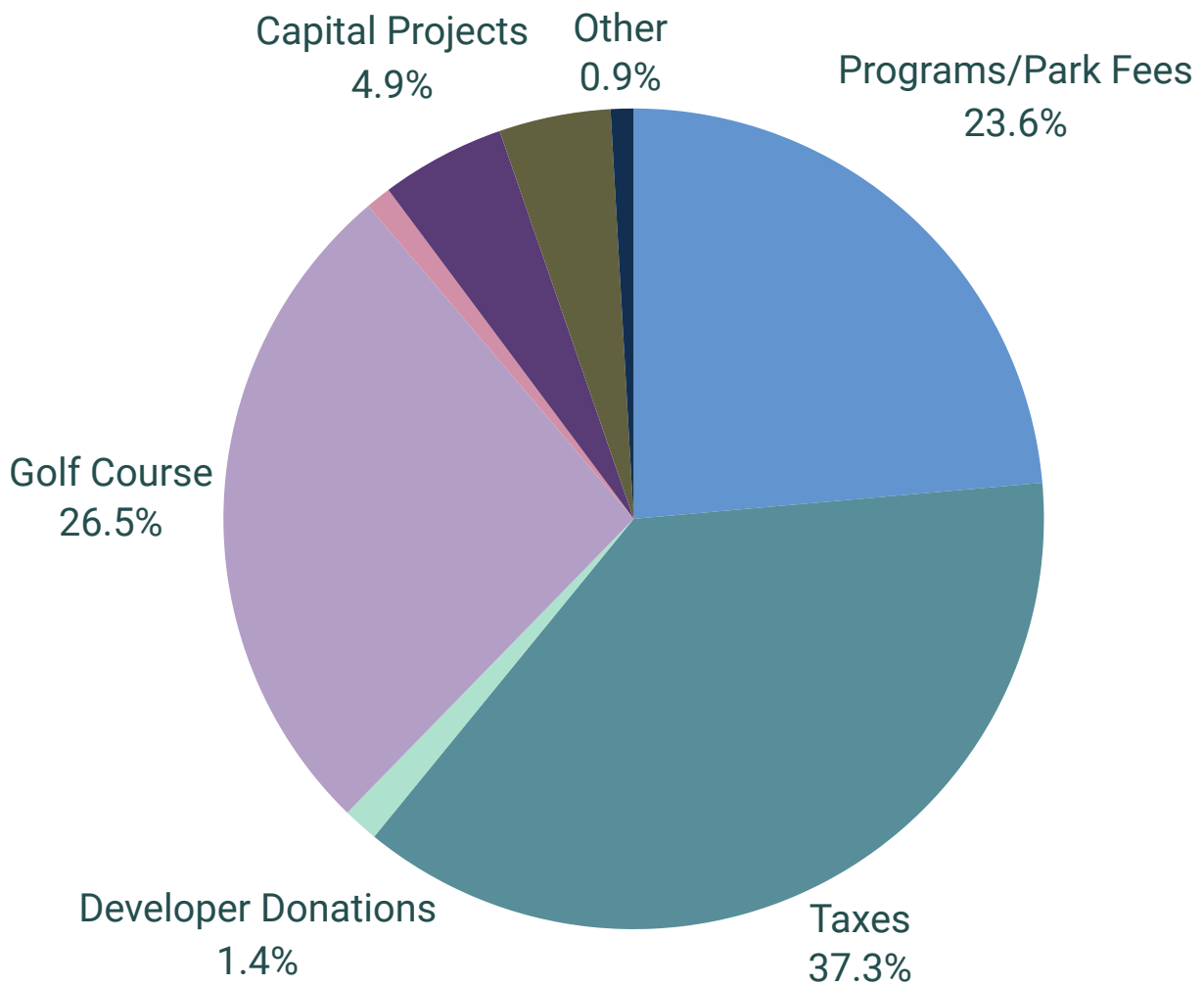
Business-type activities: The overall business-type activities increased the net position by \$107,562

Key elements of this increase are as follows:

- The Golf Course generated an increase in net position of \$123,184 to \$3,008,988. Greens fees and cart rentals increased 10.0%, or \$143,987, to \$1,585,425. Pro shop revenue increased 21.6%, or \$46,386, to \$261,030. Revenue gains were offset by rising operating costs, which increased 26.2%, or \$490,669, to \$2,359,979
- The District had a 16.9% decrease in net position of \$92,390 to \$76,768 from other proprietary fund activities. The decrease primarily resulted from a transfer to the Recreation Fund of \$75,000 for capital renovations.

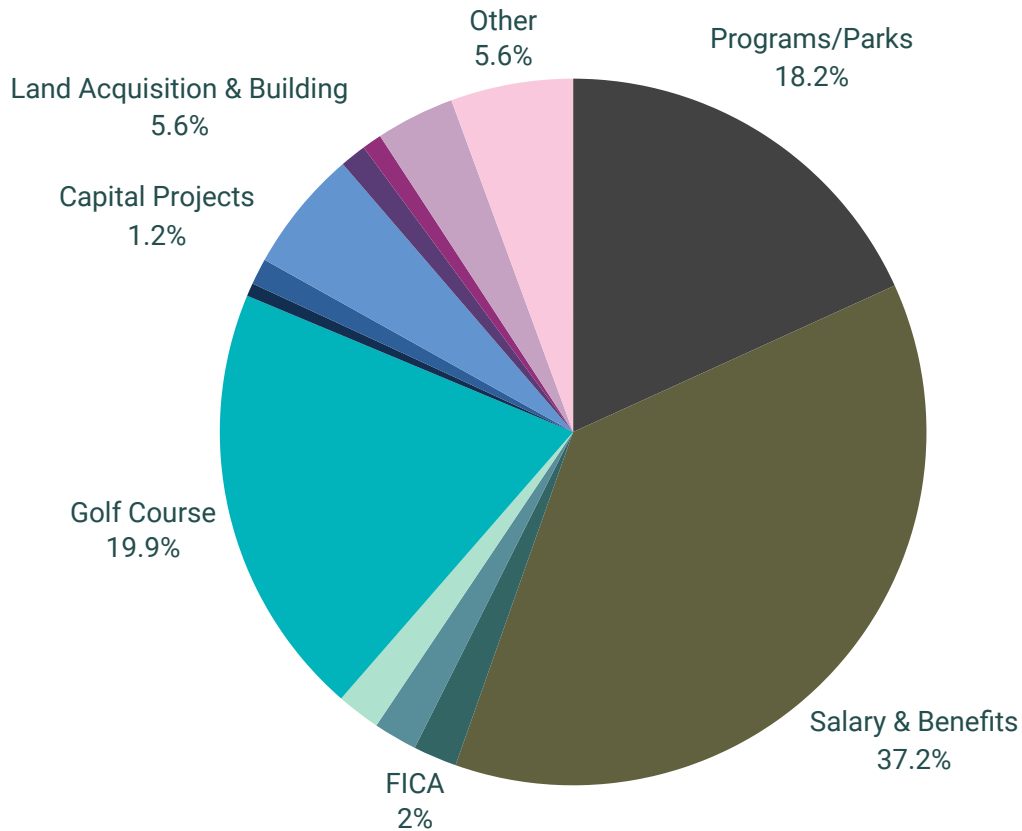


Revenue



Category	Total by Category	Percentage
▶ Programs/Parks	2,216,311.68	23.6%
▶ Taxes	3,500,863.12	37.3%
▶ Developer Donations	129,392.90	1.4%
▶ Golf Course	2,488,588.49	26.5%
▶ Banquets and Rentals	94,039.54	1.0%
▶ Capital Projects	459,036.00	4.9%
▶ Land Acquisition & Building	410,144.14	4.4%
▶ Other	84,692.69	0.9%
YTD Totals:	9,383,068.56	100.00%

Expenditures



Category	Total by Category	Percentage
► Programs/Parks	1,757,786.18	18.2%
► Salary & Benefits	3,592,699.55	37.2%
► FICA	195,350.05	2.0%
► IMRF	194,495.51	2.0%
► GO Bonds	195,467.20	2.0%
► Golf Course	1,921,338.57	19.9%
► Banquets and Rentals	56,249.71	0.6%
► Capital Projects	111,874.64	1.2%
► Land Acquisition & Building	540,105.46	5.6%
► Liability Insurance	113,367.06	1.2%
► Street Light & Paving	89,858.18	0.9%
► Special Recreation	343,122.75	3.6%
► Other	539,973.74	5.6%
YTD Totals:	9,651,688.60	100.0%

IN CLOSING

The New Lenox Community Park District's 2022-2023 Annual Report provides highlights of the District's accomplishments, finances, activities, events, and projects undertaken during fiscal year ending April 30, 2023. It also provides an overview of where we intend to go in the fiscal year ending April 30, 2024.

The District's total net position increased 4.33%, in fiscal year ending April 30, 2023. The increase is the result of improved revenues in the Golf Course Fund, as well as increased capital grants. The District also saw improved revenue in the Recreation Fund, as programs began to return to normal after the disruption of the COVID-19 pandemic.

Financial data was drawn from the 2022-'23 Comprehensive Annual Financial Report, which can be viewed in its entirety online.

Questions or feedback concerning any of the information provided may be directed to Executive Director, Greg S. Lewis, CPRP at glewis@newlenoxparks.org or Director of Business Services, Kathy Lynch at klynch@newlenoxparks.org.

CONTACT US



815-485-3584



newlenoxparks.org



701 W. Haven Avenue
New Lenox, IL 60451

FOLLOW US

