

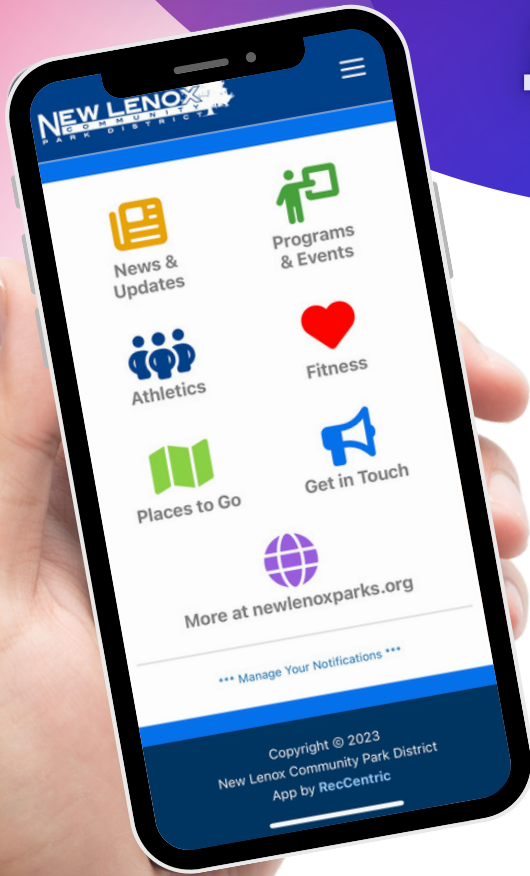
2023-'24



# WINTER/SPRING PROGRAM GUIDE

**RESIDENT REGISTRATION**  
Begins December 11

# Download Our New App!



Introducing our mobile app, designed for effortless program and event registration. Explore all we have to offer with ease!



Scan the QR code on your mobile device.



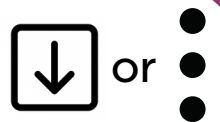
On the bottom of your screen, click the  icon.



Scroll down to locate the "Add to Home Screen" option, then tap "Add"



In the top right corner of your screen, click



Tap "Install" twice

SCAN ME



You can now close your device's browser and access the app at any time from the Home Screen!



Apple



Android



## GREETINGS FROM YOUR NEW LENOX COMMUNITY PARK DISTRICT!

Spread some Holiday Cheer with the New Lenox Community Park District!

Join the New Lenox Community Park District in welcoming the holiday season with Christmas in the Commons beginning December 2nd. Whether you're renting skates or bringing your own, we've got plenty of festive fun for everyone. For rental hours and additional information, visit [newlenoxparks.com](http://newlenoxparks.com).

Looking for something to do this winter? Check out our Recreation Department's Program Guide for a range of community activities. From the Mom and Son Nerf Battle to the Hop Till You Drop event, our activities offer something for everyone. Don't forget to sign up for our Bus Trips as well, and let us take care of the driving while you sit back and enjoy the ride.

We are thrilled to share that our Business Services Department has been awarded the Certificate of Achievement for Excellence in Financial Reporting by the Government Finance Officers Association of the United States and Canada (GFOA) for the 15th consecutive year. We value transparent communication of our financial story with the community we serve.

Spring brings exciting news with the opening of our state-of-the-art Golf practice facility featuring Toptracer technology. Visit [golfsanctuary.com](http://golfsanctuary.com) for more information, including opening dates for each section.

We are equally excited about the completion of our Phase II OSLAD renovation at Hibernia Park. Our new amenities will be available soon, and we can't wait for the community to enjoy them.

Lastly, we want to express our gratitude to the dedicated employees who make our events and programs successful. The Board of Commissioners appreciates your hard work and commitment to the New Lenox Community Park District. We invite everyone to try a new program or event and stay active in the community.

Sincerely,

Ted Schulz  
Park Board President

## OUR MISSION

is to provide safe recreational opportunities through diverse programs, facilities and open space, with the overall goal being improvement of the quality of life in our community.



Ted Schulz, President



Brian Fischer, Vice President



Dale Larson, Secretary



Garry Kraemer, Treasurer



Mark Ott Jr., Commissioner

## PARK BOARD MEETINGS OPEN TO PUBLIC

Anyone wishing to address the Park Board must notify the Board in writing by noon on the Friday before the regular meeting. Meetings will be held at 6:00pm on the third Wednesday of the month at the Village of New Lenox (1 Veterans Parkway) in the Board Room - 2nd Floor.

# PARK DISTRICT FACILITIES & STAFF

## OUR MISSION

is to provide safe recreational opportunities through diverse programs, facilities and open space, with the overall goal being improvement of the quality of life in our community.



### NLCPD ADMINISTRATION BUILDING

701 W. HAVEN AVENUE, NEW LENOX, IL 60451

PH: (815) 485-3584 • FAX: (815) 485-3589

**\*\*Registration available at this location only.**

#### HOURS OF OPERATION:

Monday-Friday, 9:00am-4:30pm

### Executive Services

**Greg Lewis, CPRP, Executive Director**

### Business Services Staff

**Kathy Lynch, Director of Business Services**

- Jason Braglia, CPRP, Deputy Director of Business Services
- Nicole Saltzman, Deputy Director of Business Services
- Janine White, Business Services Generalist

### Parks & Maintenance Staff

**George Travnicek, Director of Parks Maintenance**

- Ken Stephens, Parks Maintenance Assistant Director
- John Camp, Facilities Maintenance Supervisor
- Gary Wilde, CPSI, Parks Maintenance Supervisor
- Shaun Elder, Parks Maintenance Supervisor
- Dylan Tobias, Parks Maintenance Laborer
- Owen Sigrist, Parks Maintenance Laborer
- Larry Hensley, Parks Maintenance Laborer
- Nick Bojan, Parks Maintenance Laborer

### Recreation Staff

**Lea Pipiras, CPRP, Director of Recreation**

- Olga Viano, CPRP, Deputy Director of Recreation
- Kelly Matson, Recreation Supervisor
- Amy Maher, Recreation Supervisor
- Dominic Cooper, Recreation Supervisor
- Bethany Lerch, CPRP, Recreation Supervisor
- Brooke Krol, Recreation Supervisor
- Missy McGrath, Guest Services Supervisor
- Christina Studlow, Office Coordinator
- Aurora Abbott, Office Coordinator
- Jeff Franson, Custodial Maintenance Supervisor
- Deborah Barks, Custodial Maintenance Laborer



### LIONS COMMUNITY CENTER

1 MANOR DRIVE, NEW LENOX, IL 60451 (Not a Mailing Address)

PH: (815) 485-3584 • FAX: (815) 485-5952

### THE SANCTUARY GOLF COURSE

485 N. MARLEY ROAD, NEW LENOX, IL 60451 (Not a Mailing Address)

[golfsanctuary.com](http://golfsanctuary.com)

PH: (815) 462-4653 • FAX: (815) 462-4659

#### HOURS OF OPERATION:

Open Daily (weather permitting)

#### Robert Schulz, PGA, Director of Golf

- Ethan Bedsaul, PGA, Golf Course Assistant Director
- Ben McAdams, PGA, Golf Course Assistant Manager
- Bill McInerney, PGA, Golf Course Assistant Professional
- Michael Ledvina, Golf Course Food and Beverage Supervisor
- Madelyn Burdelik, Golf Course Food and Beverage Manager
- Douglas Eggert, GCSAA, Golf Course Superintendent
- Michael Wesolowski, Golf Course Assistant Director



## Winter/Spring 2023-'24

Please check Lincoln-Way  
Community High School website  
for Team Asset information at  
[lw210.org/page/asset](http://lw210.org/page/asset)





## CREATE A CLASS

The Park District is looking for local hidden talent to instruct or lead various recreational classes. Do you like to set your own work schedule? Do you have a background in fitness, early childhood, craft design or any other special ability? If so, join our staff and contribute to "Quality Community Life" in New Lenox. We are always looking for new instructors with creative ideas. If you have a particular skill or are willing to lead activities, please call (815) 485-3584.

## Commemorative Tree and Bench Program

Are you looking for a special way to honor a loved one or to commemorate a special event? The New Lenox Community Park District's Commemorative Tree and Bench Program is dedicated to planting a tree or placing a bench in honor of a loved one, organization or to celebrate your special occasion. There are a variety of trees that can be purchased and planted. Please keep in mind that trees may be purchased at any time but are only planted in the spring and fall and benches will be installed weather permitting. Please note that these trees and/or benches may be placed within a park site or at our Sanctuary Golf Course, but restrictions do apply. Each commemorative donation will be designated with a plaque honoring your request. For further information, please call (815) 485-3584.

## Reminder to Pet Owners

When visiting local parks with your pet, please remember that the Park District and Village ordinances require dogs to be leashed at all times. Owners are responsible for cleaning up any animal excrement from public property.

## What is the S.T.O.P. PROGRAM?

S.T.O.P. stands for Stop Trashing Our Parks and is represented by our mascot, Bucky the Beaver. Bucky's mission is to keep our parks safe and free of vandalism. To help support Bucky's mission, cash rewards will be paid for information leading to the apprehension of park vandals (individuals providing information are not required to identify themselves). Hopefully, kids of all ages can relate to our friendly mascot and his mission.



## TABLE OF CONTENTS

### Information Categories

T.E.A.M. Asset of the Month .....	4
Athletic Associations .....	10
Community News You Can Use .....	11
Commemorative Bench/Tree Program .....	5
Lincolnway Special Recreation Association .....	16
Mission Statement .....	4
New Lenox Fire Protection District .....	10
New Lenox Friends of the Parks .....	10

### ONLINE REGISTRATION ..... 9

Park Board .....	3
Park District Staff .....	4
Park District News .....	5
Park Map/Amenities .....	44-45
Park Partners .....	10
Park Policies .....	6
Park Shelter Rentals/Trail Guide .....	43
Parties and Rentals .....	41-42
President's Letter .....	3
Program Requirements .....	6

### REGISTRATION INFORMATION & FORM ..... 7-9

Sanctuary Golf Course .....	12-13
"STOP" Trashing Our Parks Program .....	5

### Programs Offered

ACES .....	14
Beyond the Bell .....	15
Adult Athletics .....	17-18
Adult Programs .....	21-23
Bus Trips .....	24-25
Children's Athletics .....	30-32
Children's Programs .....	26-29
Dance .....	36
Fitness .....	20
Gymnastics/Cheerleading .....	38
Kiddie Kampus .....	33-35
Special Events .....	40
Tween Programs .....	39

Find us on Facebook,  
Twitter, Instagram &  
YouTube.



## PROGRAM REQUIREMENTS

- Children must be the correct age by 9/1/23, unless otherwise specified. In order to provide your child with the best possible recreational and/or learning experience, all our programs are planned according to the ages listed in our Program Guide.
- Children must meet the age requirements of a class. The Recreation Department reserves the right to request a birth certificate if the age of the child is in question. If a child is not the appropriate age for a class, he/she will be dropped from the program.
- Classes are for the registered child only, except for classes with an adult. Parents will drop child off at the designated location, you will not be able to remain in the classroom, gymnasium or the Lions Community Center. This is in the child's best interest, as continual interruptions tend to affect participants' attention span and inhibit the establishment of peer relationships.
- All children must be potty-trained unless they are attending a class where an adult stays with them or is otherwise stated in the class description. Diapers are not permitted in independent classes unless stated in the class description.
- Please do not bring food to any class unless previously arranged.
- For your child's safety, all children enrolled in programs must be picked up from the specific classroom or program site by their parent(s) or designated guardian. No child will be released from the classroom to anyone other than individuals from the pick-up list.
- A mandatory sign-in and sign-out procedure for all participants is required for all Park District Programs. Children must be accompanied by an adult when escorted to and from class.

## REFUND POLICY

No refunds are given: (1) once a program begins unless a replacement is found; (2) on material fees unless we cancel a program; (3) on bus trips; or (4) for special events or one-day programs. A full refund is issued if we cancel a program or trip.

- When a participant cancels out of a program, a full refund, less a \$5 service charge (per program), will be granted. A \$5 service charge will also be assessed on all program transfers.
- These requests will only be honored if the request is submitted three business days prior to the start of the program or activity.
- All refunds less than \$10 will be applied as a credit to the customer's account.
- Every effort will be made to process refunds within 30 days, but in some instances it may take longer.
- New Lenox Community Park District reserves the right to change program details at any time.

## CANCELLATIONS

Staff reserves the right to consolidate, postpone, reschedule, or cancel any program due to changes in day, dates, times, instructor or insufficient enrollment. If program enrollment does not meet the minimum number of registrants, we try to cancel the program seven days prior to the start date or by the registration deadline.

For cancellations due to unforeseen circumstances (i.e., inclement weather, facility emergencies or scheduling conflicts), which are announced by Lincoln-Way District 210 or New Lenox School District 122 at facilities where Park District programs are scheduled, Park District programming will be cancelled as well. All attempts will be made to reschedule cancelled classes. However, the New Lenox Community Park District is sometimes unable to accommodate make-up classes and will not refund money in such instances.

## PROGRAM BEHAVIOR POLICY

Participants are expected to exhibit appropriate behavior. The following guidelines have been developed to help make Park District programs safe and enjoyable for all participants. Additional rules may be developed for programs and athletic leagues as deemed necessary by staff.

- Show respect to participants and staff and take direction from staff.
- Refrain from using abusive or foul language or from causing bodily harm to self, other participants or staff.
- Show respect to equipment, supplies and facilities. The New Lenox Community Park District reserves the right to terminate a party's participation in a Park District program due to that party's disruptive behavior or conduct.

## PROGRAM GUIDE DISTRIBUTION

To provide you the most up-to-date information, the Program Guides will be available online only at [newlenoxparks.org](http://newlenoxparks.org). We continue to review guidelines to determine the best way to safely serve the community while fulfilling our mission of providing quality community life.

## PHOTO DISCLAIMER

Registrants and participants permit to the taking of photos and videos of themselves and their children during Park District activities for publication and use as the Park District deems necessary.

## LIABILITY

The New Lenox Community Park District is unable to assume responsibility for injuries, accidents or loss of personal property occurring during programs or activities, in parks or facilities. Such insurance would make programs and user fees prohibitive.



## PROGRAM INFORMATION ICONS

Throughout the Program Guide, you will recognize icons adjacent to programs. These icons are to assist you with additional information.

- Programs that require a parent and child to attend are shown with this icon:



- The Park District runs programs for the community through a partnership with different businesses. They provide knowledgeable and background-checked instructors who will direct each program. Programs that are contracted are shown with this icon:



- Please note that for selected ticketed or special events as well as some ongoing programs, online registration is not available. Programs that do not allow online registration are shown with this icon:



## AMERICAN DISABILITIES ACT (ADA)

A request for ADA modifications or assistance at a program is required at the time of registration. Please mark the ADA box on the Registration Form and call our Administration Building at (815) 485-3584. Early registration, along with a request for accommodation, is strongly suggested to assure that appropriate modifications are secured prior to the start of the program. We recommend at least four weeks' notice to have modifications in place.



## REGISTRATION POLICIES

- A government issued birth certificate is required for all participants two (2) years and younger before registration will be accepted.
- Parents/guardians may register for immediate family members only. Each adult must sign the Registration Form.
- Phone-in registrations are not accepted.
- If there is a problem with your registration, we will contact you by phone or email. If we cannot reach you, the Registration Form will be returned by mail and your place in the program cannot be saved. Be sure to include a valid daytime phone number and e-mail on all Registration Forms.
- Registration is not complete until a printed confirmation or email receipt has been issued.
- The New Lenox Community Park District is not responsible for lost or late mail or faxes.
- All Registration Forms must be signed. Those without signatures will be returned to the sender, thereby jeopardizing registration and program placement.
- A \$25 service charge will be assessed on all rejected credit card payments for families utilizing our installment billing system and \$30 service charge on all returned checks.
- The New Lenox Community Park District reserves the right to suspend participation in activities of customers whose account is in "bad standing" until all fees are paid. Failure to pay may result in collection costs added to outstanding balances.

## RESIDENT REGISTRATION (R)

Resident Registration and Online Registration will begin on Monday, December 11, at 9:00am at the Administration Building, 701 W. Haven Avenue. Registration Forms are accepted as soon as our Program Guide is posted on our website, but will not be processed until Monday, December 11, at 9:00am. Early submission of registration does not guarantee enrollment in a program.

## NONRESIDENT REGISTRATION (NR)

Nonresident participants can register for New Lenox Community Park District programs beginning Monday, December 18. Additional fees for nonresidents may apply. We do not charge a nonresident fee for special events or bus trips.

*See our Adult Athletics  
on pages 17-18.*

# REGISTRATION INFO

## FIRST-TIME REGISTRATION

When registering for the first time, residents will need to provide proof of residency by showing proper documentation. Those documents include:

### One Item from Category 1

- Most recent property tax bill
- Most recent mortgage statement (we do not accept mortgage coupon payment books)
- Signed and dated lease or letter from manager (on letterhead) and proof of last month's payment
- Mortgage closing statement (if you have moved in the last 30 days)

### Two Items from Category 2

- Valid Illinois Driver's License or State I.D. Card
- Most recent gas, electric and/or water bill
- Most recent cable television bill, credit card bill and/or bank statement
- Voter Registration
- Vehicle Registration
- Current Public Aid Card

Nonresidents will need to provide a valid Driver's License or State I.D. Card at the time of registration.

## PAYMENT

- Full payment must be paid to the New Lenox Community Park District at time of registration
- Cash, credit/debit cards or checks are acceptable forms of payment
- Checks should be made payable to New Lenox Community Park District or NLCPD
- We do not accept payments over the phone

## SCHOLARSHIP PROGRAM

If you are a New Lenox resident and cannot participate for financial reasons, you may be eligible for financial aid. Please e-mail completed Financial Aid Application and supporting documentation to Olga Viano at [oviano@newlenoxparks.org](mailto:oviano@newlenoxparks.org). Forms are located on our website under district information. All required documentation must be submitted with the completed application two weeks prior to the start of the program. Please note that the maximum household scholarship benefit is \$1,000 per year.

## MILITARY DISCOUNT

We are pleased to offer a military discount for those who qualify. A Military Master Form must be filled out completely prior to receiving the military discount. For more information, please visit [newlenoxparks.org/registration/](http://newlenoxparks.org/registration/).

In-District/Out-of-District Residents

- 50% Active-Duty Discounts – Discount applies to family members who reside in the same household.
- 25% for Veteran Discounts – Discount applies to family members who reside in the same household.

## SIMPLE WAYS TO REGISTER

### Online

- Begins Monday, December 11, at 9:00am for residents and Monday, December 18, at 9:00am for nonresidents
- Go to [newlenoxparks.org](http://newlenoxparks.org) and click on Online Registration
- Residents and nonresidents may create their own online account by clicking on "Need an Account?" However, residents who have NOT established residency will be charged nonresident fees (if applicable) for Park District programs until residency has been established. Nonresident fees are non-refundable. Review "First Time Registration" to see how to establish residency.

### Mail-In/Drop-Off

- Place the completed and signed Registration Form with your payment in a sealed envelope and mail to:
- New Lenox Community Park District, 701 W. Haven Avenue, New Lenox, IL 60451
- One Item from Category 1 (New Families)
- Two Items from Category 2 (New Families)
- Or place in a Drop Box outside the following locations:
  - \*Administration Building, 701 W. Haven Avenue
  - \*Lions Community Center, 1 Manor Drive
- Mail-In/Drop-Off Registration is accepted as soon as our Program Guide is posted on our website and will be retained until registration begins on Monday, December 11, at 9:00am.

### Email

- Email your completed and signed Registration Form with credit card information to [geninfo@newlenoxparks.org](mailto:geninfo@newlenoxparks.org)
- Email Registration is accepted as soon as our Program Guide is posted on our website and will be retained until registration begins on Monday, December 11, at 9:00am.

### Fax-In

- Fax your completed and signed Registration Form with completed credit card information to (815) 485-3589
- Fax-In Registration is accepted as soon as our Program Guide is posted on our website and will be retained until registration begins on Monday, December 11, at 9:00am.

### Walk-In

- Register in person at the Administration Building, 701 W. Haven Avenue during regular business hours beginning on Monday, December 11, at 9:00am for residents and Monday, December 19, for nonresidents.





# REGISTRATION FORM

Under the Americans with Disabilities Act, if you need any accommodations to participate in an activity, please indicate: Yes No

*\*Please indicate for whom below.*

## Household Information

Primary Number: \_\_\_\_\_ Cell Phone: \_\_\_\_\_  
Last Name: \_\_\_\_\_ Work Phone: \_\_\_\_\_  
Home Address: \_\_\_\_\_ Emergency Contact: \_\_\_\_\_  
City: \_\_\_\_\_ State: \_\_\_\_\_ Zip Code: \_\_\_\_\_ Emergency Contact Relation: \_\_\_\_\_  
Email: \_\_\_\_\_ Emergency Phone: \_\_\_\_\_

Participant's Name	ACTV#	Program Name	Birth Date	Grade	M/F	Fee	Allergies or ADA Requested*

FOR OFFICE USE ONLY: INITIALS: \_\_\_\_\_ DATE: \_\_\_\_\_ TYPE: \_\_\_\_\_

First and Last Name of Five Adults that will be picking up your child(ren) from our Program. You must include parent/guardian

names: 1. \_\_\_\_\_

2. \_\_\_\_\_

3. \_\_\_\_\_

4. \_\_\_\_\_

5. \_\_\_\_\_

## YOU MUST SIGN AND DATE WAIVER TO PARTICIPATE IN PARK DISTRICT PROGRAMS.

Please read carefully and be aware that in registering yourself or your minor child/ward for participation in the program(s), you will be waiving and releasing all claims for injuries you or your child/ward might sustain arising out of the program(s).

I recognize and acknowledge that there are certain risks of physical injury to participants in the program(s) and I agree to assume the full risk of any such injuries, damages or loss regardless of severity, which my child/ward or I may sustain as a result of participating in any activities connected or associated with any such program(s). I waive and relinquish all claims I or my child/ward may have against the New Lenox Community Park District and its officers, agents, servants, and employees, and any other cooperative Park District and its officers, agents, servants and employees as a result of participation or the participation of my child/ward in any of the program(s) and cooperative programs with other park districts. I further agree to indemnify and hold harmless and defend the Park District(s) and its officers, agents, servants and employees from any and all claims resulting from injuries, damages and loss sustained by me or by my child/ward, arising out of, connected with, or in any way associated with the activities of any of the program(s). I have read and fully understand the program details and waiver and release claims.

Mandatory Signature of Participant, Parent, or Legal Guardian

Date

<b>Please mark payment type:</b> <input type="checkbox"/> CASH <input type="checkbox"/> CHECK <input type="checkbox"/> VISA <input type="checkbox"/> MASTERCARD <input type="checkbox"/> DISCOVER <input type="checkbox"/> AMERICAN EXPRESS	Billing Address Zip Code: _____ Account Number: _____ Expiration Date: ____/____ Security Code: ____ Cardholder Name: _____ Billing Address: _____ Address City/State Amount of Charge: \$ _____ Authorized Signature: _____ (The NLCPD reserves the right to change a payment to reflect the correct fee.)	<b>Check or Money Order Payable To:</b> New Lenox Community Park District "NLCPD" <b>Mail To:</b> New Lenox Community Park District 701 W. Haven Avenue New Lenox, IL 60451 <b>E-mail To:</b> <a href="mailto:geninfo@newlenoxparks.org">geninfo@newlenoxparks.org</a> Upon Receipt of Your Catalog: Mail, Fax(815.485.3589), E-mail or Drop Off Your Registration.
---	---	--

# PARK PARTNERS

The New Lenox Community Park District is pleased to provide contact information for many of the organizations with whom we partner with. It is through the Park District's successful partnerships with these groups that we all contribute to improving the quality of life in the community of New Lenox.

## AREA AGENCIES

Lincoln-Way Community High School District 210 .....	(815) 462-2345
New Lenox Chamber of Commerce .....	(815) 485-4241
New Lenox Cub Scout Packs 6, 49, 94 .....	(815) 942-4450
New Lenox Girl Scouts .....	(815) 723-3449
New Lenox Community Channel 6 .....	(815) 462-6428
New Lenox Township (Dial A Ride) .....	(815) 485-6431
New Lenox Fire Protection District (Administration) .....	(815) 463-4500
New Lenox Library .....	(815) 485-2605
New Lenox Police (Administration & Non-Emergency) .....	(815) 462-6100
New Lenox School District 122. ....	(815) 485-2169
Senior Services Center of Will County .....	(815) 723-9713
Village of New Lenox .....	(815) 462-6400

## SCHOOL DISTRICTS AND NEW LENOX TOWNSHIP

The New Lenox Community Park District would like to extend a thank you to the school districts serving the area (122 and 210) and New Lenox Township. It is through the cooperation of the school board and administrative staff of these districts that we can offer more programs in satellite locations to members of the community. Thank you for allowing our programs to grow and enhance our community!

## NEW LENOX YOUTH ATHLETIC ASSOCIATIONS

The Park District maintains the athletic fields; independent athletic associations run these programs. Registration is handled through each individual association and NOT the Park District. Listed below is the contact information provided to us from our Athletic Associations.

### NL Soccer Association/Legacy Soccer Club

[newlenoxsoccer.org](http://newlenoxsoccer.org)

### NL Girls Softball

[nlgsa.org](http://nlgsa.org)

### NL Rebels Baseball

[newlenoxrebels.com](http://newlenoxrebels.com)

### NL Mustangs Football

[newlenoxfootball.com](http://newlenoxfootball.com)

### NLYFA Jr. Knights/Jr. Warriors Football

[nlyfa.com](http://nlyfa.com)

## 2024 CPR CLASSES

### New Lenox Fire Protection District

Please check the fire district's website at [nlfire.com](http://nlfire.com) for monthly class dates and times. NLFPD is an authorized American Heart Association (AHA) Training Center providing courses in Adult CPR, Child CPR, Infant CPR, for Healthcare Providers and the laypersons.



All classes are at New Lenox Fire Station 1, 261 E. Maple Street, and begin at 8:30am unless otherwise noted on the website. Registration is required to attend.

**For more information and to register, visit [nlfire.com](http://nlfire.com).**

The Fire District conducts several other public events throughout the year. For information, contact the Fire and Life Safety Educator at (815) 463-4500 for dates and details.

# JOIN NOW

## New Lenox Friends of the Parks members needed!



Create ~ Promote ~ Develop ~ Maintain ~ Improve  
**New Lenox Community Park District**

For more information contact  
[newlenoxfriendsofthepark@gmail.com](mailto:newlenoxfriendsofthepark@gmail.com)  
779.803.3246



## A Matter of Balance



This program can help seniors improve their quality of life and remain independent. Participants learn to set realistic goals to increase activity, change their environment to reduce fall risk factors and learn simple exercises to increase strength and balance. Please call Daniel Martin, Safe Community Coordinator, for further information at (815) 462-6493 or via email at [dmartin@newlenox.net](mailto:dmartin@newlenox.net).

## Triad Meetings

The Manhattan-New Lenox TRIAD for Older Adults would like to invite older adults (age 50 and up) from the area to attend their monthly meeting. A major purpose of TRIAD is to develop, expand and implement effective crime prevention and health and safety educational programs for seniors in our community. TRIAD works to improve the quality of life for older adults by providing an opportunity for the exchange of information between public safety (police & fire), social services and seniors. There is no registration or membership needed to attend this or any of the TRIAD meetings. These meetings are for all older adults in and around our community. Please join us!

Day	Date	Time
TH	2/22	1:30-2:30pm
TH	3/28	1:30-2:30pm
TH	4/25	1:30-2:30pm
TH	5/23	1:30-2:30pm

**Location:** Will County Sheriff Office, 16911 W. Laraway Rd, Joliet IL.

If you have any questions, please contact:

- Marisa Schrieber, New Lenox Fire, (815) 463-4527
- Officer Kristine Kioltyka, New Lenox Police, (815) 462-6145



## New Lenox Public Library Homebound Service

### Adult

The Homebound Library Delivery Service at the New Lenox Library provides free library services to individuals who are residents within our district boundaries, have a current New Lenox Library card and are unable to physically come to the library. Delivery or pick up is available to individuals unable to come to the library due to mobility, health or disability barriers. Whether you are at home, in assisted living or in a nursing facility, you are eligible. For further information, please call the New Lenox Public Library Homebound Coordinator at (815) 485-2605, Ext. 134.



## Donate used Cell Phones to "Cells for Seniors"

The cell phones are free to seniors and can only be used to access 911 in case of an emergency. Drop off your used cell phones at these New Lenox locations:

- Administration Building, 701 W. Haven Avenue
- New Lenox Township, 1100 S Cedar Road
- New Lenox Police Department, 200 Veterans Parkway

## Friends Over 50 1340 WJOL

Friends Over 50 with Ed & Michelle Kerfin is a talk show dedicated to topics affecting everyone including financial, healthcare and lifestyle issues. This talk show is fun and informative and will always make you laugh. You never know who you will meet on the show. Tune in Fridays from 10:00am-1:00pm.

## Need a Ride to One of our Programs?

Call the Transportation Service at the New Lenox Township at (815) 485-6431 for safe, affordable, and on-time rides for all New Lenox residents. Please visit [newlenox.org/transportation-service](http://newlenox.org/transportation-service) for rates.



*See our fun Bus Trips  
on pages 24-25.*

# THE SANCTUARY GOLF COURSE



485 N. Marley Road  
New Lenox, IL 60451

Call (815) 462-GOLF (4653)  
Fax (815) 462-4659

Our expert golf instructors are dedicated to helping golfers of all skill levels improve their game and achieve their goals on the green.



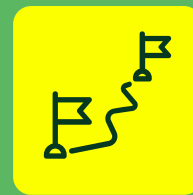
Leagues



Adult Classes  
Jr Classes



Driving  
Range



Events

Visit [golsanctuary.com](http://golsanctuary.com) for current rates, events, junior and adult golf classes, and private lessons.



Buy gift cards for any amount online or directly at the Golf Shop, and they can be redeemed on anything offered at our facility!

**Registration for  
Classes and Programs begins  
March 1, 2024**

12

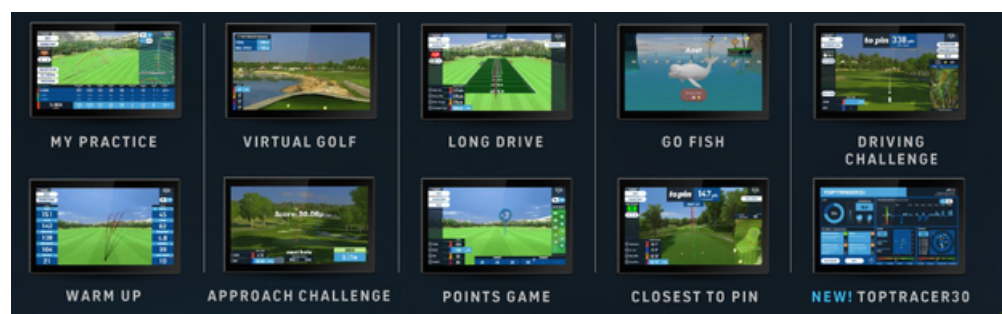
[NEWLENOXPARKS.ORG](http://NEWLENOXPARKS.ORG) • (815) 485-3584







**Get ready to tee off in style, folks! Our state-of-the-art practice facility will open in 2024. With Toptracer technology, your golfing skills are about to skyrocket. Visit [golfsanctuary.com](https://golfsanctuary.com) for all the juicy details, including when each section opens.**



**TOPTRACER**



## ACES/BEYOND SCHOOL PROGRAM

Grades K-6 (2023-2024 School Year)



The ACES program is designed to provide a safe, structured before and after school program for children attending District 122 schools in grades Kindergarten through sixth. The program hours are 6:30am until school begins and after school until 6:30pm.

Online registration will be available after your one-time nonrefundable \$35 registration fee has been paid.

- Weekly payment is due by 10:00am on Tuesday of the previous week
- After Tuesday a \$25 late fee per child will be charged
- Late registration will be taken until the previous Thursday at Noon
- Registration will not be taken after the cutoff, No Exceptions
- No drop-off registration will be taken
- We do not credit accounts for days absent or transfer days

Payment can be made online, emailed to [geninfo@newlenoxparks.org](mailto:geninfo@newlenoxparks.org) or dropped off at the drop box located outside of the NLCPD Administration Building, 701 W. Haven Avenue.

**We offer an Automatic Payment Plan option for those individuals who are attending ACES on a set schedule.**

Please view the Commitment Form and the Financial Agreement Form on our website. To enroll in the Automatic Payment Plan, you must complete and submit these forms to the Park District office one week prior to starting the program. There will be a \$25 service charge if your card declines.

### ePACT For ACES

All families are required to use ePACT. ePACT information must be completed prior to the first day participant attends program. ePACT is a secure emergency network, that we will use to collect medical and emergency contact information electronically.



Price List	5 DAYS	4 DAYS	3 DAYS	2 DAYS	1 DAY	PROGRAM LOCATIONS
<b>BEFORE SCHOOL</b>	\$65	\$54	\$44	\$32	\$18	<b>Spencer ACES</b> Spencer Crossing School Cafeteria  <b>Nelson ACES</b> Nelson Prairie School Cafeteria  <b>Tyler/Bentley ACES</b> Tyler School Cafeteria  <b>Haines/Oakview ACES</b> Haines School Cafeteria
2nd child	\$60	\$50	\$41	\$30	\$17	
<b>AFTER SCHOOL</b>	\$81	\$66	\$53	\$37	\$21	
2nd child	\$75	\$61	\$49	\$34	\$20	
½ Day Early Dismissal Upcharge		<b>12/21, 2/16, 5/10, 5/31</b>			\$20	



# BEYOND THE BELL/SUMMER SNEAK PEAK

## BEYOND<sup>the</sup> BELL

Grades K-6

LCC (Room 1) Entry C

School's off! Join us for an action-packed, fun-filled day. We will provide age-appropriate activities including organized games, arts and crafts, field trips and much more. We have divided the day to offer additional options for working parents who may not need the full 12-hour care. For more information, call the Park District at (815) 485-3584.

- Before Care will be from 6:30am to 9:00am and a light breakfast will be provided.
- Beyond the Bell will be from 9:00am to 3:30pm where they will need to bring a lunch with their name on it.
- After Care will be from 3:30pm to 6:30pm and a snack and drink will be provided.

A \$25 late fee per child will be added after the registration deadline. Late registration will be taken until the previous Thursday at Noon. No Registration Will Be Taken After Deadline, No Exceptions. No drop-off registration allowed! For more information, call the Park District at (815) 485-3584.

Beyond the Bell	Times	4 days	3 days	2 days	1 day
1st Child	9:00am-3:30pm	\$127	\$102	\$72	\$53
2nd Child	9:00am-3:30pm	\$120	\$97	\$68	\$50
Add'l Out of District Fee	9:00am-3:30pm	\$10	\$8	\$6	\$4
Before Care	Times	4 days	3 days	2 days	1 day
1st Child	6:30-9:00am	\$54	\$44	\$32	\$18
2nd Child	6:30-9:00am	\$50	\$41	\$30	\$17
Add'l Out of District Fee	6:30-9:00am	\$8	\$6	\$4	\$2
After Care	Times	4 days	3 days	2 days	1 day
1st Child	3:30-6:30pm	\$66	\$53	\$37	\$21
2nd Child	3:30-6:30pm	\$61	\$49	\$34	20
Add'l Out of District Fee	3:30-6:30pm	\$8	\$6	\$4	\$2



Participants not currently enrolled in ACES or Trailblazers will be required to pay a one-time nonrefundable registration fee of \$35.

### December

Day	Date	Registration Deadline
F	12/22	TU, 12/12 by 10:00am
W-TH	12/27- 12/28	TU, 12/19 by 10:00am

### January

Day	Date	Registration Deadline
TU-F	1/2-1/5	TU, 12/26 by 10:00am
M	1/8	TU, 1/2 by 10:00am
M	1/15	TU, 1/9 by 10:00am

### March

Day	Date	Registration Deadline
M-TH	3/25-3/28	TU, 3/19 by 10:00am

### April

Day	Date	Registration Deadline
M	4/1	TU, 3/26 by 10:00am
F	4/19	TU, 4/9 by 10:00am



**More information about summer camp and Spencer Trailblazers, including dates and fees to come in the Summer Program Guide. Registration begins May 6. Stay Tuned!**

## Spencer Trailblazers Registration Begins June 13 Grade K (2024-2025 School Year)

Spencer Trailblazers is an extended childcare program held in the blue neighborhood at Spencer Trail for Kindergarten students. This program is available for 3, 4 or 5 days of extended care. A minimum of 3 days a week is required. A one-time nonrefundable registration fee of \$35, commitment form and financial agreement is required at the time of registration. Automatic Payment Plan is required for this program.

- Morning Trailblazers (PM Kindergarten Students) 8:25am-12:20pm
- Afternoon Trailblazers (AM Kindergarten Students) 10:55am-3:00pm





*Lincolnway*  
SPECIAL RECREATION  
ASSOCIATION

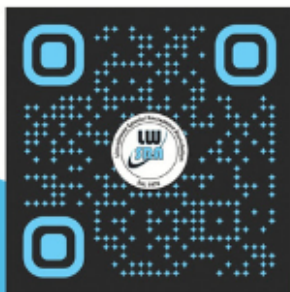
# BUILDING A COMMUNITY WITHOUT LIMITS

## About Us

Since 1976, the Lincolnway Special Recreation Association (LWSRA) has provided recreation services for individuals with disabilities through a cooperative agreement with its eight member park districts: Crete, Frankfort, Frankfort Square, Manhattan, Mokena, New Lenox, Peotone and Wilmington Park Districts. Participants enjoy active, healthy and more independent lifestyles through a variety of recreational and social opportunities.

## Benefits of Recreation

- ✓ Discover new experiences & interests
- ✓ Build confidence & friendships
- ✓ Socialize in an inclusive setting



## Our services



### Social Programs

Engage with similar-aged peers in a structured but fun-filled social environment. Staff create opportunities to develop skills and try new experiences. Popular programs include dances, bingo, trivia, community trips, adult day program, summer camps and social groups.



### Interest-based Programs

Find programs centered around fitness or cultural arts. Try competitive Special Olympics and adapted sports or fitness outlets such as strength & conditioning and introductory sports skills. Enjoy creative arts through cooking, drawing & painting, dancing and more!



### Inclusion Programs

Park Districts welcome participation of individuals with disabilities in all recreational programs. The district works cooperatively with LWSRA to facilitate successful participation for individuals who request an inclusion aide. Inclusion services give participants the needed support in a typical park district setting.

**LEARN MORE AT [WWW.LWSRA.ORG](http://WWW.LWSRA.ORG)**



(815) 320-3500  
[support@lwsra.org](mailto:support@lwsra.org)



1900 Heather Glen Drive  
New Lenox, IL 60451



## 5-on-5 Basketball League

Adult

Spencer Crossing Gymnasium (Entry L)

Bring your team for a chance to win cash prizes. Teams will play an 8-game regular season, followed by a single-elimination tournament for the top 10 teams. Game times range from 6:15pm, 7:00pm, 7:45pm, 8:30pm, 9:15pm each week. Scheduled start/end dates and game times are subject to change. Games will be a running clock with two 20-minute halves. There is a maximum of 12 people per roster. A security deposit of \$150 (non-refundable) is due at time of registration. All fees must be paid in full by Friday, January 19. No EXCEPTIONS! League information will be emailed to each captain prior to the season. Online registration must be paid in full.

**Registration deadline is Wednesday, January 17.**

Activity	Day	Date	R/NR	Skip Date
37183-A1	TH	2/1-4/11	\$739 per team	3/28

## 12" Summer Softball League

Adult

Lions Den Park Softball Field

Teams will play a 10-game regular season, followed by a single-elimination tournament. Game times are 6:30pm, 7:30pm, 8:30pm or 9:30pm with the time changing each week. Cancellations due to weather can be rescheduled for Sundays, or on a night that you do not regularly play. Scheduled start/end dates and game times are subject to change. All leagues are ONE Nation sanctioned. A security deposit of \$150 (non-refundable) is due at time of registration. All fees must be paid in full by Friday, April 19. NO EXCEPTIONS. League information will be emailed to each captain prior to the season. Online registration must be paid in full.

**RETURNING Team Registration: Register now to save a spot**

**NEW Team Registration Begins: Monday, 3/18.**

**Registration deadline is Wednesday, April 17**

## Men's Leagues

Activity	Day	Date	R/NR
82143-A1	M	4/29-8/12	\$715 per team
82144-A1	TU	4/30-8/13	\$715 per team
82145-A1	W	5/1-8/14	\$715 per team

## Co-Ed Leagues

Activity	Day	Date	R/NR
82146-A1	TH	5/2-8/15	\$715 per team



## Sand Volleyball League

Adult

Lions Den Park Sand Volleyball Courts

Teams will play an 8-game regular season, followed by a single-elimination tournament. This is a fun, laid-back league with no referees, as players must call their own game. Game times are 6:00pm, 7:00pm, 8:00pm or 9:00pm with the time changing each week. Scheduled start/end dates and game times are subject to change. Cancellations due to weather can be rescheduled on a night that you do not regularly play. League information will be emailed to each captain prior to the season. Online registration must be paid in full.

**Registration deadline is Friday, April 26.**

## 2-on-2 League

Activity	Day	Date	R/NR
12216-A1	TU	5/7-7/23	\$136 per team

## Frankfort New Lenox Running Club

Adult



The Frankfort New Lenox Running Club is an easy going, all volunteer club, focused on running. There is no fee or pace requirements. Everyone is welcome; just show up and run! We do not host sanctioned or timed events. We host weekly group runs, which are posted on our Facebook page. To join, visit their [Frankfort New Lenox Running Club Facebook page](#). Please refer to the events tab on their Facebook page for potential changes to either the run location or cancellations due to weather.

**Note: All members must complete the waiver on the Facebook page before being added to the group.**

# ADULT ATHLETICS

## Adult Drop-in Programs

Lincoln-Way West and Lincoln-Way Central High School Field House

Get off the couch and come play! Patrons must follow drop-in procedures and show a valid picture ID. Drop-in participants must pay at the front desk when arriving to the Field House. Cash only. Sign up for a season pass for a discounted rate!



ACTV#	LOCATION	DAY/TIME	DATES	FEES
Pickleball ACTV#36298-A1	LW Central Field House	Mon., 7:00-9:00pm	1/15-5/13	\$60/LWR Season Pass \$65/NR Season Pass \$10/LWR • \$15/NR per night
Women's Open Fun Basketball ACTV#37291-A1	LW Central Field House	Mon., 7:00-9:00pm	1/15-5/13	\$60/LWR Season Pass \$65/NR Season Pass \$10/LWR • \$15/NR per night
Women's Open Fun Volleyball ACTV#37296-A1	LW Central Field House	Mon., 7:00-9:00pm	1/15-5/13	\$60/LWR Season Pass \$65/NR Season Pass \$10/LWR • \$15/NR per night
Volleyball ACTV#37295-A1	LW Central Field House	Wed., 7:00-9:00pm	1/10-5/15	\$60/LWR Season Pass \$65/NR Season Pass \$10/LWR • \$15/NR per night
Open Gym (Badminton, Volleyball, Basketball) ACTV#37299-A1	LW Central Field House	Thurs., 6:00-9:00pm	3/21-5/16	\$10/LWR • \$15/NR per night
Men's 35 & Older Basketball ACTV#37293-A1	LW West Field House	Mon. & Wed., 7:00-9:00pm	1/10-5/15	\$110/LWR Season Pass \$115/NR Season Pass \$10/LWR • \$15/NR per night
Open Basketball ACTV#37299-A1	LW West Field House	Thurs., 6:00-9:00pm	3/21-5/16	\$10/LWR • \$15/NR per night

## Skip Day Information

- Scan the code for the Lincoln-Way Field House and Fitness Center monthly schedules.
- The Field House may end earlier due to lack of attendance.
- Due to circumstances beyond our control, additional skip days may be added. These dates will be posted as we are notified





# LINCOLN-WAY FITNESS CENTER & TRACK INFO



## INDOOR WALKING TRACK INFORMATION

Utilizing the Walking Track is **FREE** for Lincoln-Way Residents.  
Non-Residents must pay a rate of \$5 per visit.

### Field House Entrance

January 10 - May 17

### Lincoln-Way West Walking Hours

Mon., Wed.-Fri., 6:00-9:00pm (March start time is 7:00pm)

Sat., 1:00-4:00pm

Sun., 9:00am-1:00pm

### Lincoln-Way Central Walking Hours

Mon., Wed. & Thurs., 6:00-9:00pm (March start time is 7:00pm)

### Track Information

#### Age 18 & Older

Must have photo ID

- A temporary walking pass will be provided at the Park District check-in desk at the Field House
- Approximately 8-9 laps in lanes 5 or 6 equal one mile
- Be alert for others around you
- Slower moving users shall stay on the inner side of the track and faster moving users shall stay to the outside. Only two side-by-side users allowed during programs. Users may not be three abreast across the track.
- Inappropriate behavior will not be tolerated. Such behavior will result in the revocation of participant's pass. All revocations are subject to the Director of Recreation's review/interpretation.
- Only gym shoes will be allowed in the Field House
- No food or beverages other than water are allowed in the Field House



## LINCOLN-WAY WEST FITNESS CENTER

January 10- May 17

### Age 14 & Older

The Lincoln Way West Fitness Center has been renovated and now only includes free weights and cardio machines. Patrons must provide a valid picture ID upon entering the Fitness Center.

Day	Time
M, W-F	6:00-9:00pm
SA	1:00-4:00pm
SU	9:00am-1:00pm

- Drop-In participants under the age of 18 must have a signed Parent Permission Slip which can be found on our website under the Drop-In Programs tab
- Registration is only taken at the Park District office or at the fitness center during the Park District's scheduled hours. You are NOT able to register through Lincoln-Way.

### Fees & Membership

Ages 14-22 (LW Resident Student with ID)

#### Activity LWR

37512-A1 \$50

#### Age 18-54

#### Activity LWR/NR

37512-A2 \$80/ \$85

#### Ages 55 & Older

#### Activity LWR/NR

37512-A3 \$25/\$30

#### Daily Drop-In Rate

LWR/NR: \$10/\$15

## Skip Day Information

- Scan the code for the Lincoln-Way Field House and Fitness Center monthly schedules.
- The Field House may end earlier due to lack of attendance. Patrons are encouraged to arrive at the program's start time.
- Due to circumstances beyond our control, additional skip days may be added. These dates will be posted as we are notified



# FITNESS CLASSES

## FITNESS Age 12 & Older

Start the New Year by choosing to make health and fitness a lifestyle change! Studies show that exercise helps you feel better, sleep better, and have more energy! Join one of our many programs to help you stay focused. Participants under the age of 16 are required to be registered along with a parent.

### Cardio Kickboxing

**Lincoln-Way West High School Dance Studio**

**Instructed by: Carissa Pavlik**

Cardio Kickboxing combines various kickboxing, boxing, and mixed martial arts movements with great music to create a fun, full-body workout that anyone can do! We use the rhythm, speed, and phrasing of the music to execute punching, kicking, blocking and combination sequences in a safe and effective manner. Bring a water bottle & towel to class.

Activity	Day	Date	Time	R/NR	Skip Date
37197-A1	M	1/8-2/12	6:00-7:00pm	\$52/\$57	1/15
37197-A2	M	3/18-4/15	6:00-7:00pm	\$52/\$57	



### Hatha Yoga

**LCC (Room 2) Entry C**

**Instructed By: Heather Letts**

Hatha Yoga creates balance in the body and the mind. This is accomplished by looking to the eight limbs of yoga including asana (physical movement) and pranayama (breathing exercises). During the course, we will discover how the linking of physical movement and breath work can begin to slow the mind and release stress. This class is great for people who are looking to decompress from their day and need low impact exercises that will still build strength. All levels of experience and flexibility are welcome! For your comfort, please come to class on an empty stomach (eat two hours before class) and wear loose fitting clothing. Please bring your own yoga mat and strap.

### Fit4Baby

**Lincoln-Way West High School Dance Studio**

**Instructed By: Fit4Mom Certified Instructors**



FIT4BABY is a workout program designed specifically for moms-to-be. It includes cardio, strength training, balance, flexibility and core exercises to accommodate all trimesters of pregnancy. This 6-week program includes prenatal workouts once a week, weekly emails with tips and recipes, and a prenatal journal "the bump book" to document this special time. FIT4BABY will build your endurance, strengthen your body and prepare you for pregnancy, birth and beyond.

**To learn more and to register for class, please visit [lemont.fit4mom.com](http://lemont.fit4mom.com) or email [meghanstone@fit4mom.com](mailto:meghanstone@fit4mom.com).**

Day	Date	Time
TH	1/11-5/16	6:30-7:30pm

Activity	Day	Date	Time	R/NR
37519-A1	TH	1/18-3/7	7:30-8:30pm	\$72/\$77
37519-A2	TH	3/21-5/9	7:30-8:30pm	\$72/\$77



## CoVantage

CREDIT UNION

Outstanding Value ~ Exceptional Service

**800-398-2667 • [covantagecu.org](http://covantagecu.org)**

1000 E. Lincoln Hwy, New Lenox • 19102 88<sup>th</sup> Ave., Mokena



## Jam Session & Social Time

Adult

LCC (Room 1) Entry C



Gather for an afternoon of music! Can't play an instrument? Join us to listen, sing along and meet new friends. If you do play, tune up your instrument and come join this group of musicians that meet the first Tuesday of each month beginning February 6. All types of music are played including from the American Song Book, the Swing Era, Dean Martin and Frank Sinatra. Bring your sheet music to share.

Day	Dates	Time
TU	2/6, 3/5, 4/2, 5/7	2:30-4:30pm

## Quilting Club

Adult

Attention all quilting enthusiasts! Join the club that meets on select Wednesdays and Fridays to bond with other quilters. On Wednesdays, Quilting Club members will take turns sharing and showing their projects. Fridays at Quilting Club are set aside to work on your unfinished projects. All talent levels are welcome. This club meets on the first Wednesday and the third Friday of each month. Don't forget your machine! The group continues to grow and is always looking for new members.

Activity	Day	Date	Time	R/NR
39241-A1	W	1/3-5/1	10:00am-3:30pm	\$20R/Yr
	F	1/19, 5/17	11:00am-3:30pm	

### Location:

Senior Housing Community Room  
1090 South Cedar Road, New Lenox



## Active Adult Exercise

Age 55 & Older

Administration Building (All-Purpose Room)

Get in shape and have fun during this fitness class designed for active adults! Stretching and cardiovascular exercises are included. All fitness levels are welcome. No instructor: class follows along to a CD called Fun & Fitness Over 50.

Activity	Day	Date	Time	Skip Date
39190-A1	M/W/F	1/3-5/31	10:00-11:00am	1/15, 2/12, 2/19, 3/29, 5/27



Family Owned & Operated since 1928

(815) 485-8697 • 2100 Calistoga Drive, New Lenox • [hickeyfuneral.com](http://hickeyfuneral.com)  
Still serving the community through alternate locations during the construction of our new facility.



# ADULT PROGRAMS

## Tai Chi

Ages 50 & older

This class is offered by Will County Senior Services. The goal of this class is to improve balance to prevent falls, increase flexibility and reduce stress. Its slow, soothing movements incorporate deep breathing and relaxing postures that help calm the mind and body each time you go through gentle movements.

### Intermediate Level

Day	Date	Time
TU	1/2-3/19	1:30-2:30pm
TU	4/2-6/18	1:30-2:30pm

### Beginner Level

Day	Date	Time
TU	1/2-3/19	2:30-3:30pm
TU	4/2-6/18	2:30-3:30pm

**Fee:**  
Must have a Will County Senior Services Membership. Please call Senior Services at 815-723-9713 for details or visit <http://willcountyseniors.org/membership/>

**Location:**  
Senior Housing Community Room  
1090 S. Cedar Road, New Lenox



## Coloring Club

Adult  
Administration Building (All-Purpose Room)



Coloring isn't just for kids anymore! In Coloring Club, you will rediscover the simple relaxation and joy of coloring. This is a great activity to explore your artistic side. You will get the joy of creating a beautiful work of art with no artistic skills required. Coloring is known to reduce stress and improve hand-eye coordination. This club will meet every other Wednesday. All materials are included.

Activity	Day	Date	Time
39592-A1	W	1/17, 1/31, 2/14, 2/28, 3/13 3/27, 4/10, 4/24, 5/8, 5/22	1:00-2:30pm



## Horseback Riding

Age 7 & Older



It's time to ride at Nova Quarter Horses! Fun for all ages at any riding level, no previous experience is needed. Come out to learn both Western and English disciplines taught by our highly qualified trainers and instructors. We offer both an indoor and outdoor arena, so Nova is able to offer lessons year round. A 5-lesson card includes 5 individual one hour group lessons. Helmets are available at parent's request. Once your lesson card is purchased, call Nova to schedule your lessons at (708) 479-3696. There is a limit of one initial park district 5-lesson card per family. Additional lessons to be purchased directly through Nova. Jeans and boots or hard soled shoes are required.

**Activity**      **R/NR**  
32250-A1      \$272/\$277  
**Location:**  
Nova Quarter Horses, Inc.  
10129 W. 187th Street, Mokena

THE NAME YOU CAN  UST.



 **630-381-0927**  
HEATING • COOLING • PLUMBING  
[www.TRMillerNow.com](http://www.TRMillerNow.com)





## Understanding Social Security: A look at the Bigger Picture



Adult

Administration Building (All-Purpose Room)

Presented by: Bentron Financial Group, Inc.

Are you or someone you know ready to begin receiving Social Security? If you are going to collect Social Security benefits in the next 10 years you should attend this educational session. In this session you will learn when to take benefits, working while getting benefits, taxation and Social Security and spousal benefits. Learn what you need to know to maximize the benefits you have earned. Join Greg Kurinec of Bentron Financial Group, Inc. for a lively and informative discussion!

Registration deadline is Thursday, January 11.

Activity	Day	Date	Time	R/NR
37600-A1	TU	1/16	6:00-7:00pm	Free



## 80/20 Rule: A Powerful Tool to Lose Weight and Regain Energy

Adult

Administration Building (All-Purpose Room)

Presented by: Christine Rosandich, MS, Nutrition & Wellness Program Manager

Some foods are nourishing and are essential to good health and other foods actually deplete our system of important vitamins and minerals. The 80/20 Rule is more "real-life" and easier to follow than other diet plans. Chris will share how this rule allows you to create a habit of eating nourishing foods 80% of the time and still enjoy all the foods you love in moderation without feeling restricted or deprived. You will also learn why some foods cause inflammation and are concerning to our health.

Registration deadline is Thursday, March 14.

Activity	Day	Date	Time
37181-A1	TU	3/19	10:00-11:15am

## Top Ten Toxic Food Ingredients in Processed Food to Avoid



Adult

Administration Building (All-Purpose Room)

Presented by: Christine Rosandich, MS, Nutrition & Wellness Program Manager

Most foods that have been canned, dehydrated, or had chemicals added to it is considered processed and make up about 60 percent of the average American diet. Some of the ingredients commonly found in these foods are harmful. These could include refined grains, trans fats, high fructose corn syrup, and all the other artificial junk you can't even pronounce on the ingredient lists. We will review which ingredients to stay clear of for better health.

Registration deadline is Thursday, April 11.

Activity	Day	Date	Time
37592-A1	TU	4/16	10:00-11:15pm



## Green Living in a Toxic Environment: Spring Cleaning with Essential Oils and Chemical-Free Products



Adult

Administration Building (All-Purpose Room)

Presented by: Christine Rosandich, MS, Nutrition & Wellness Program Manager

We use products every day on our bodies and in our homes that contain ingredients that are harmful. We will explore the environmental working group's (EWG) "guide to healthy cleaning" for healthier alternatives and also review the wonderful benefits of using toxic-free products and essential oils in your home.

Registration deadline is Thursday, May 23.

Activity	Day	Date	Time
37593-A1	TU	5/28	10:00-11:15am

## BUS TRIPS

### TAKE A TRIP with the New Lenox Community Park District!

We have a variety of travel destinations to choose from, so sit back, relax and let us take care of the driving. Call your family, friends and neighbors and join the fun! Please note that there is no additional fee for nonresidents charged for our bus trips. For further details for the trips listed here or to suggest a future travel destination, please contact the Recreation Department at (815) 485-3584, we'd love to hear from you!



### The Tenors 3, An Italian Celebration

Adult  
Utica, IL



The synergy of Richard Gersten, Oscar Menoyo, and Luis Galvez will amaze you as this trio of professionally- trained tenors presents diverse music encompassing Opera, Broadway and the standard Italian favorites infused with a touch of comedy. The Tenors 3 are great performers; they bring class, humor, and music to our Lodge. A special Italian buffet will be included with this show! Fee includes transportation, lunch buffet, show and gratuity.

**Registration deadline is Friday, February 23.**

Activity	Day	Date	Time	R/NR
31529-A1	TU	3/12	9:45am (LCC Departure) 4:45pm (Return Approximately)	\$129

### How much walking to expect:

Minimal = Some =   
Mostly =



### The Fireside Dinner Theatre Presents Fiddler on the Roof

Adult  
Fort Atkinson, WI



The Fireside Dinner Theatre in Fort Atkinson, Wisconsin has been the premiere entertainment destination in the Midwest for superb musicals featuring Broadway performers, fine dining, and boutique shops in a one-of-a-kind setting. Millions of people every year fall in love with Tevye, the long-suffering dairyman who struggles to find a balance between his traditions and his family. Now celebrating 60 years, as is The Fireside, we are proud to present a brand-new revival of one of the most popular shows in our history. The show's universal theme touches everyone, leaving audiences crying tears of both joy and sadness. Including such iconic songs as "Sunrise, Sunset," "If I Were a Rich Man" and "Matchmaker, Matchmaker," Fiddler on the Roof is the perfect mix of audience-pleasing humor and heart. Fee includes motorcoach transportation, lunch, gratuity, and the show.

**Registration deadline is Friday, March 8.**

Activity	Day	Date	Time	R/NR
31523-A1	TH	4/11	7:45am (LCC Departure) 6:15pm (Return Approximately)	\$155

### Afternoon Tea at the Little Traveler

Adult  
Geneva, IL



Join us for a fabulous afternoon in Geneva! We will enjoy Afternoon Tea in the Atrium Café at everyone's favorite shopping spot, the Little Traveler. This traditional three-course English Afternoon Tea includes tea sandwiches, scones, sweets, and a selection of teas. The Little Traveler is a quaint 36-room Victorian Mansion filled with all kinds of treasures and is the perfect spot to enjoy tea with your friends. Geneva is also a shopper's paradise boasting over 100 specialty shops, many in historic storefronts and charming Victorian-style homes. After tea, you will enjoy some free time for shopping. Fee includes afternoon tea and transportation.

**Registration Deadline is Wednesday, February 28**

Activity	Day	Date	Time	R/NR
39370-A1	W	3/27	9:30am (LCC Departure) 4:15pm (Return Approximately)	\$69

**To ensure the success of our trips, some are scheduled in cooperation with Frankfort Park District.**

**Sorry..... there are no refunds on bus trips**



## Polonia Chicago

Adult  
Chicago, IL



You don't have to travel overseas to visit the Old Country. Chicago boasts a thriving Polish community, and we will celebrate all things Polish. Our day will begin with a tour of a magnificent Polish church in the heart of Chicago's Polish Village. Next, we'll visit The Polish Museum of America for a docent-led tour. Afterward, we'll enjoy a sit-down Polish meal complete with all the Polish favorites including pierogi, Polish sausage, and red cabbage, along with time to shop along Milwaukee Avenue. We'll end our day with shopping at a Polish local gem so that we may bring home some tasty treats. Fee includes tour, museum admission, lunch, gratuity, and transportation.

**This trip departs from Frankfort Park Districts Founders Center. Registration Deadline is Wednesday, March 20.**

Activity	Day	Date	Time	R/NR
39371-A1	TH	4/25	8:45am (Founders Center) 5:30pm (Return Approximately)	\$149

## Illinois Holocaust Museum

Adult  
Skokie, IL



Recognized as the third largest Holocaust Museum in the world, Illinois Holocaust Museum & Education Center is an award-winning attraction offering memorable experiences that are not to be missed. Travel through history as you explore life before, during, and after the Holocaust. Step into an authentic German rail car, visit impressive galleries and contemplative spaces, both indoors and out. You'll have the opportunity to explore the Karkomi Holocaust Exhibition on your own, where survivor narratives, personal belongings, photographs, and videos weave together into a moving and responsive experience. You'll be able to encounter an interactive Survivor Speaker, where the museum features a groundbreaking interactive voice recognition technology enabling visitors to engage in conversation with a three-dimensional, strikingly life-like image of an actual Holocaust Survivor. Fee includes admission to Illinois Holocaust Museum and Education Center, self-guided tour admission and survivor speaker experience, transportation and a boxed lunch including a variety of mini deli sandwiches (turkey, corned beef and egg salad), pickle, fruit cup, bottled water and chocolate chip cookie.

**Registration deadline is Thursday, April 4.**

Activity	Day	Date	Time	R/NR
31549-A1	Tu	5/7	9:00am (LCC Departure) 5:00pm (Return Approximately)	\$55

## Beautiful: The Carole King Musical

Paramount Theatre

Adult  
Aurora, IL



Nominated for 7 Tony Awards, with 2 wins and a Grammy Award winner for Best Musical Theater Album! Before she was the Carole King we know today, she was a young songwriter from Brooklyn trying to make a name for herself. Beautiful – The Carole King Musical tells the inspiring true story of King's remarkable rise to stardom as part of the hit songwriting team with her husband Gerry Goffin and going on to become one of the most successful singer, songwriter, and musicians in popular music history. Her credits include songs such as "You've Got a Friend," "[You Make Me Feel Like] A Natural Woman," "It's Too Late," "I Feel the Earth Move," "Will You Love Me Tomorrow," "So Far Away," and many more. Along the way, she made more than beautiful music, she wrote "The Soundtrack to a Generation". Before the show, we will enjoy a delicious catered lunch in the Theatre Ballroom. Fee includes transportation, ticket, and lunch.

**Registration Deadline is Wednesday, May 1.**

Activity	Day	Date	Time	R/NR
39372-A1	W	5/29	11:00am (LCC Departure) 5:15pm (Return Approximately)	\$125

## New York City

Adult  
New York, NY



Experience the best of "The Big Apple" in this spectacular tour! From Rockefeller Center to Greenwich Village, New York City is a destination that will dazzle even the most seasoned traveler. Spend four nights in the heart of Midtown close to Central Park and Times Square. Take your seat and watch the curtain rise for an exciting Broadway show. Ferry to the Statue of Liberty and Ellis Island. See the Empire State Building and Central Park. Visit the poignant 9/11 Museum and 9/11 Memorial. Enjoy plenty of free time to shop and explore this fabulous city. Get ready to "start spreading the news!" The trip is run by Collette Travel Company. Transportation to the airport is provided! A special travel presentation will be held on Thursday, February 22, 2024, at 3:00pm in the All-Purpose room at 701 W Haven Ave. New Lenox. Book now with a \$698 deposit.

**Registration deadline is Tuesday, February 27. Final payment is due by Friday, May 24. Space is very limited so register today!**

Activity	Day	Date	R/NR (Flight Included)
31516-A1	TH-M	8/29-9/2	\$3299 per person single
31516-A2	TH-M	8/29-9/2	\$2799 per person double
31516-A3	TH-M	8/29-9/2	\$2769 per person triple

# CHILDREN'S PROGRAMS

## Toddle Time!

Ages 1-3

LCC (Room 1) Entry C



Come join the fun! We will run, jump, play, sing, make crafts and read stories. This class will introduce your child to a class setting, following directions and listening as a group. This class is taught by a Kiddie Kampus preschool teacher. Infants are also allowed in the class to watch the fun so there is no need to find a babysitter. The price is for up to two children only.

Activity	Day	Date	Time	R/NR	Skip Date
30128-A1	TU	1/9-2/27	9:30-10:30am	\$95/\$100	
30128-A2	TU	3/5-4/30	9:30-10:30am	\$95/\$100	3/26
30128-A3	TU	1/9-2/27	10:45-11:45am	\$95/\$100	
30128-A4	TU	3/5-4/30	10:45-11:45am	\$95/\$100	3/26



## Preschool Prep

Ages 2.5-4

LCC (Bi-Centennial Room) Entry E

This is a great preparation class for children who want to attend school. The alphabet, numbers, colors, and shapes will be introduced. Also, a fun craft will be made each week. Session 2 is a continuation of Session 1. The instructor cannot change diapers. Please bring your own labeled nut free snack, folder and backpack each day.

Activity	Day	Date	Time	R/NR	Skip Date
30132-A1	TU	1/9-2/27	9:45-11:45am	\$128/\$133	
30132-A2	TU	3/5-4/30	9:45-11:45am	\$128/\$133	3/26

## Preschool Blast Off

Ages 2.5-4

LCC (Bi-Centennial Room) Entry E

This class is the last step before preschool. The alphabet, numbers, colors, and shapes will be introduced. Children will participate in circle time, crafts, and movement. Session 2 is a continuation of Session 1. The instructor cannot change diapers. Please bring your own labeled nut free snack, folder and backpack each day.

Activity	Day	Date	Time	R/NR	Skip Date
31705-A1	TH	1/11-2/29	9:45-11:45am	\$128/\$133	
31705-A2	TH	3/7-5/2	9:45-11:45am	\$128/\$133	3/28

## School Time!

Ages 1-3

LCC (Room 1) Entry C

Each week the class will cover a letter, number, color, or shape. A parent or caregiver stays to interact with their child to encourage socialization during free play time and participation in circle time learning. This class is taught by a Kiddie Kampus preschool teacher. Infants are also allowed in the class to watch the fun, so no need to find a babysitter. Price is for up to two children only. This class can be taken in conjunction with Toddle Time!

Activity	Day	Date	Time	R/NR	Skip Date
30126-A1	TH	1/11-2/22	9:30-10:30am	\$85/\$90	
30126-A2	TH	2/29-5/2	9:30-10:30am	\$85/\$90	3/14, 3/21, 3/28
30126-A3	TH	1/11-2/22	10:45-11:45am	\$85/\$90	
30126-A4	TH	2/29-5/2	10:45-11:45am	\$85/\$90	3/14, 3/21, 3/28

## Lil' Learners

Ages 2.5-4

LCC (Bi-Centennial Room) Entry E

This class will prepare your child for preschool by presenting the basic skills, stressing the social development of your child and the importance of learning through play. Group and individual activities will help your child develop new skills and make new friends. Session 2 is a continuation of Session 1. The instructor cannot change diapers. Please bring your own labeled nut free snack, folder and backpack each day.

Activity	Day	Date	Time	R/NR	Skip Dates
30192-A1	F	1/12-3/1	9:45-11:45am	\$128/\$133	
30192-A2	F	3/8-5/3	9:45-11:45am	\$119/\$124	3/29, 4/19





## Horseback Riding

Age 7 & Older

Instructed by: Nova Quarter Horses

Get up and go! It's time to ride at Nova Quarter Horses! Fun for all ages at any riding level, no previous experience is needed. Come out to learn both Western and English disciplines taught by our highly qualified trainers and instructors. We offer both an indoor and outdoor arena, so Nova is able to offer lessons year round. A 5-lesson card includes 5 individual one hour group lessons. Helmets are available at parent's request. Once your lesson card is purchased, call Nova to schedule your lessons at (708) 479-3696. There is a limit of one initial park district 5-lesson card per family. Additional lessons to be purchased directly through Nova. Jeans and boots or hard soled shoes are required.

<b>Activity</b>	<b>R/NR</b>
32250-A1	\$272/\$277

## Nova Quarter Horses Winter Camp

Ages 7+

Instructed by: Nova Quarter Horses

Come join Nova Quarter Horses for 4 fun filled days of Winter Horse Camp! Each day will consist of hands-on experience and a riding lesson. Guided by our experienced staff members, each participant will learn to saddle, bridle and groom their very own horse before taking them to the arena for the daily lesson. No need to worry about the weather outside, as the Nova office is heated and the barn and arena are insulated and climate controlled. Ages 7+. All skill levels welcome. Jeans and hard soled shoes required.

<b>Activity</b>	<b>Day</b>	<b>Date</b>	<b>Time</b>	<b>R/NR</b>
37256-A1	TU-TH	1/2-1/4	10:00am-3:00pm	\$302/\$307

**Location: Nova Quarter Horses, Inc. 10129 W. 187th Street, Mokena**



# Holiday Children's Classes



## "Bee" My Valentine

Ages 3-7

LCC (Bi-Centennial Room) Entry A



Join us for an evening of Valentine's excitement! We will make Valentine's Day crafts, play Valentine-themed games and enjoy a story together! Parent must attend class with child.

<b>Activity</b>	<b>Day</b>	<b>Date</b>	<b>Time</b>	<b>R/NR</b>
31120-A1	W	2/7	6:00-7:00pm	\$28/\$33

## Lucky Leprechauns

Ages 3-7

LCC (Room 2) Entry A



Celebrate the luck of the Irish! Enjoy festive activities and unique crafts, all while hunting for gold! Come dressed in your best St. Patrick's Day green! Parent must attend class with child.

<b>Activity</b>	<b>Day</b>	<b>Date</b>	<b>Time</b>	<b>R/NR</b>
30361-A1	W	3/13	6:00-7:00pm	\$28/\$33

## Swing Into Spring!

Ages 3-7

LCC (Bi-Centennial Room) Entry A



Celebrate the kick-off to spring with us! We'll enjoy festive activities and a spring themed craft and story. Parent must attend class with child.

<b>Activity</b>	<b>Day</b>	<b>Date</b>	<b>Time</b>	<b>R/NR</b>
31706-A1	W	4/17	6:00-7:00pm	\$28/\$33



# CHILDREN'S PROGRAMS

¡ATENCIÓN!  
¡ATENCIÓN!

## I Speak Spanish! – Spanish for Kids

Ages 3-6

Instructed by: Language in Action, Inc.



Expand your child's world! Introduce your child to the Spanish language in this Spanish immersion class developed especially for very young learners. Children will be immersed in the Spanish language through fun and educational activities and music. Each session covers new and exciting material!

Activity	Day	Date	Time	R/NR	Skip Date
38157-A1	TU	1/16-2/20	5:00-5:45pm	\$90/\$95	
38157-A2	TU	2/27-4/9	5:00-5:45pm	\$90/\$95	3/26
38157-A3	TU	4/16-5/21	5:00-5:45pm	\$90/\$95	

### Location:

Frankfort Park District, Founders Community Center  
140 Oak Street, Frankfort, IL

## Vamos Youth Spanish Club

Ages 6-11

Instructed by: Language in Action, Inc.



Learning a second language can open a world of possibilities for your child. In this class, students will learn Spanish conversation and some Spanish grammar, reading and writing skills through interactive, engaging and fun activities and games. Each session covers new and exciting materials!

Activity	Day	Date	Time	R/NR	Skip Date
38158-A1	TU	1/16-2/20	6:00-6:45pm	\$90/\$95	
38158-A2	TU	2/27-4/9	6:00-6:45pm	\$90/\$95	3/26
38158-A3	TU	4/16-5/21	6:00-6:45pm	\$90/\$95	

### Location:

Frankfort Park District, Founders Community Center  
140 Oak Street, Frankfort, IL

## Monsters and Myths

Ages 5-12

Instructed by: Crayola Imagine Arts Academy



Unleash creativity through legends and lore. From sea creatures of the deep to phoenixes of the sky, every society has its monsters and myths. We'll tell their stories through paintings, sculptures and other works of art. These legends may inspire awe, curiosity or surprise, but they all inspire our imaginations! Each class is all about designing a one-of-a-kind mythical creature. Let your imagination soar as you explore myths from diverse cultures and tell your own stories.

Activity	Day	Date	Time	R/NR
36241-A1	W	1/24-3/13	6:00-7:00pm	\$167/\$172

### Location:

The Program Center Art Room - Mokena Community Park District  
10925 W. La Porte Rd, Mokena, IL 60448

## Rising Star Musical Theater

Ages 6-11

LCC (Room 1) Entry C

Instructed by: All About Music & Children's Theatre



Explore your dramatic and creative side while learning theatrical terms, musical concepts, and basic dance steps. Students will learn acting warmups, improv games and how to make props. They will also prepare a short performance of a popular musical such as "Aladdin", "Wizard of Oz" or "Willy Wonka" to be given during the final class.

Activity	Day	Date	Time	R/NR
30151-A1	TU	1/30-3/12	6:45-7:45pm	\$132/\$137

## Vocal Power

Ages 8-12

Administration Building (All Purpose Room)

Instructed by: Grande Prairie Children's Choir



Like to sing or would like to find your voice? Come sing with us as we explore a variety of musical styles. Boys and girls will learn to sing better through fun vocal warm-ups and age-appropriate vocal techniques. Our energetic and creative atmosphere will provide an enriching vocal experience and help children grow in confidence. Come develop your vocal skills, make friends and reach your new vocal power! There will be a presentation for parents and friends at the end of the session.

Activity	Day	Date	Time	R/NR	Skip Date
31582-A1	M	1/29-4/15	5:00-6:00pm	\$159/\$164	2/19, 3/25 4/1



# CHILDREN'S PROGRAMS

## Magic Class

Ages 5-12

LCC (Room 2) Entry D

Instructed by: Magic Team of Gary Kantor



Children are guaranteed to have a great time as they learn a collection of fascinating and mesmerizing tricks from the Magic Team of Gary Kantor! Amaze family and friends with tricks that involve cards, ropes, coins, mind-reading and more. All materials are provided, and each child receives a magic kit to take home. Children are grouped by age and always learn tricks that are age appropriate. Children can sign up again since new tricks are taught at each class.

Activity	Day	Date	Time	R/NR
31260-A1	F	2/2	6:45-7:40pm	\$28/\$33
31260-A2	W	4/24	5:00-5:55pm	\$28/\$33

## Critter Class Parent & Me

Ages 3-13

LCC (Room 1) Entry C

Instructed by: Crosstown Exotics



Critter class is an introduction to some of the world's most misunderstood creatures. Reptiles, Amphibians, and bugs. We will teach the importance of these creatures to the environment as well as their natural history and how to take care of them as pets. The class will feature live animals. No open toed shoes. An Adult must attend with participants.

Activity	Day	Date	Time	R/NR
31220-A1	TH	2/8	6:00-7:00pm	\$37/\$42
31220-A2	TH	4/25	6:00-7:00pm	\$37/\$42

## STEAM

Ages 5-11

Location: LCC (Kitchen) Entry D

Instructed by: Afterschool Enrichment Solutions

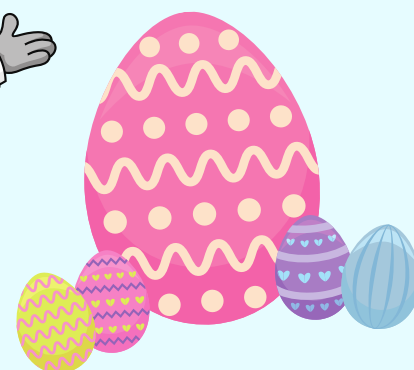


This exciting program from Afterschool Enrichment Solutions brings together elements of science, art, and math in a hands-on, action-packed environment! Students will conduct experiments, play educational games, and unlock their creativity through building challenges and projects. No experience necessary!

Activity	Day	Date	Time	R/NR	Skip Date
38136-A1	W	3/6-4/24	5:30-6:30pm	\$162/\$167	3/27

# Hop Till You

# Drop!



## Sunday

## March 24

## 9:45am-12:15pm

## All Ages

## (An Adult Must Stay)

## LCC Rooms 1 & 2

**Registration deadline is Friday, March 15,  
more information on page 40.**



## Soccer Shots

Ages 2-9

Cherry Hill School Gymnasium (Entry N)



Soccer Shots is a high-energy program introducing children to fundamental soccer principles, such as using your feet, dribbling and the basic rules of the game. Our age-appropriate curriculum is written by soccer professionals, which allows for a positive learning environment. Through fun games and positive reinforcement, children will begin to experience the joy of playing soccer and being active. Must be correct age at the start of the program.

### Mini Ages 2-3

Activity	Day	Date	Time	R/NR	Skip Date
32170-A1	W	1/10-2/14	5:00-5:30pm	\$90/\$95	
32170-B1	W	3/6-4/17	5:00-5:30pm	\$90/\$95	3/27

### Classic Ages 4-5

Activity	Day	Date	Time	R/NR	Skip Date
32170-A2	W	1/10-2/14	5:35-6:20pm	\$90/\$95	
32170-B2	W	3/6-4/17	5:35-6:20pm	\$90/\$95	3/27

### Premier Ages 6-9

Activity	Day	Date	Time	R/NR	Skip Date
32170-A3	W	1/10-2/14	6:25-7:10pm	\$90/\$95	
32170-B3	W	3/6-4/17	6:25-7:10pm	\$90/\$95	3/27

## T-Ball Time

Ages 3-4

Spencer Trail School Gymnasium (Entry N)



T-Ball Time will feature parent/child introduction in T-Ball basics such as base running, field positions, batting and sportsmanship. This class will have a lot of repetitive drills to introduce the kids to the game. Adults must participate with children each week. Children must bring their own labeled mitt to class.

Activity	Day	Date	Time	R/NR	Skip Date
30141-A1	TU	3/5-4/23	5:00-6:00pm	\$72/\$77	3/19, 3/26
30141-A2	W	3/6-4/24	5:00-6:00pm	\$72/\$77	3/20, 3/27

## Sports 101

Ages 5-8

Spencer Trail School Gymnasium (Entry N)

Does your child want to begin playing sports, but may need to learn the basics? If so, these introductory classes are what you are looking for! These classes will have a lot of repetitive drills to make sure each player can master the fundamentals before playing a game at the end of the session. Players will also improve their eye-foot coordination and large motor skills.

### Flag Football 101

Activity	Day	Date	Time	R/NR	Skip Date
30331-A1	TU	3/5-4/23	6:00-7:00pm	\$72/\$77	3/19, 3/26

### Basketball 101

Activity	Day	Date	Time	R/NR	Skip Date
30331-A2	W	3/6-4/24	6:00-7:00pm	\$72/\$77	3/20, 3/27

## Game Day Sports!

Ages 7-12

Spencer Trail School Gymnasium (Entry N)

Every day is Game Day! Each class will start with warm up drills that will teach the fundamentals. The remaining time will consist of scrimmages and games. This class offers a great experience for players to improve on their current skills and to learn new ones. Then, they will have the opportunity to translate these skills into a game format. This class offers 60 minutes of nonstop fun!

### Floor Hockey Game Day!

Activity	Day	Date	Time	R/NR	Skip Dates
38390-A1	TU	3/5-4/23	7:00-8:00pm	\$72/\$77	3/19, 3/26

### Basketball Game Day!

Activity	Day	Date	Time	R/NR	Skip Dates
38390-A2	W	3/6-4/24	7:00-8:00pm	\$72/\$77	3/20, 3/27





Drop-In Open Gym

All Ages  
Lincoln-Way Central & Lincoln-Way West High School Field House

Grab your friends and come play at the Lincoln-Way West or Lincoln-Way Central Field House! At Lincoln-Way West you can enjoy a game of basketball and at Lincoln-Way Central you can enjoy a game of Pickleball, Badminton or Volleyball. Patrons from age 11 and younger must be accompanied by an adult and ages 12-17 may be dropped off. Anyone under 18 must submit a signed Parent Permission Slip. Patrons 18 and older, must show a valid picture ID. Pay at the door. Cash only.

Activity	LWR/NR
37299-A1	\$10/\$15 per night

Skip Day Information

- Scan the code for the Lincoln-way Field House and Fitness Center monthly schedules.
- The Field House hours may end earlier due to lack of attendance.
- Due to circumstances beyond our control, additional skip days may be added. These dates will be posted as we are notified.



Ultimate Beginner Volleyball Class

Ages 6-13  
Spencer Crossing School Gymnasium (Entry L)



This program is open to all beginners and other players who want to review fundamental skills. Instruction will cover passing, setting, serving, spiking, team play and rules of the game. Skills will be broken down into simple steps and give players maximum ball contact. Games will be played every session!

Ages 6-7

Activity	Day	Date	Time	R/NR	Skip Date
32210-A1	M	3/4-4/15	6:30-7:30pm	\$79/\$84	3/25

Ages 8-9

Activity	Day	Date	Time	R/NR	Skip Date
32210-A2	TU	3/5-4/16	6:30-7:30pm	\$79/\$84	3/26

Ages 10-13

Activity	Day	Date	Time	R/NR	Skip Date
32210-A3	M	3/4-4/15	7:30-8:30pm	\$79/\$84	3/25

Ultimate Volleyball Game Play

Ages 10-13  
Spencer Crossing School Gymnasium (Entry L)



This program is open to all players who are looking to improve their skills in a game-like setting. Practice your skills of passing, setting, serving and spiking through game simulation drills. Play together as a team by learning in-game strategies from Ultimate Volleyball Coaches.

Activity	Day	Date	Time	R/NR	Skip Date
32210-A4	TU	3/5-4/16	7:30-8:30pm	\$79/\$84	3/26

Registration for our Summer Leagues will be available in our 2024 Summer Program Guide

Summer T-ball League



Summer Kick Start Soccer



## Kids First Indoor Track & Field

Ages 5-12



Excellent coaches will focus on teaching outdoor sprints, hurdles, jumps, running and throws in a safe and fundamental way. The program consists of body balance techniques and speed, quickness and agility drills to produce a quicker and safer more powerful performer. A series of team relay races makes Track & Field fun and entertaining. Program concludes with an event championship series. Speed and quickness training help for many sports. Kids will be divided up into groups based on age and ability.

Activity	Day	Date	Time	R/NR	Skip Date
36678-A1	TU	1/16-2/20	5:00-6:15pm	\$170/\$175	

**Location: Cherry Hill School Gymnasium (Entry N)**

36678-A2	SU	3/10-4/21	9:00-10:15am	\$170/\$175	3/31
----------	----	-----------	--------------	-------------	------

**Location: Lincoln-Way West High School Field House**

## Kids First Baseball Fundamentals

Ages 5-12

Cherry Hill School Gymnasium (Entry N)



This baseball program prepares and challenges all players through fun and competitive drills to develop skills that will maximize your player's potential. Players will experience drills in, batting, fielding, pitching, base running and throwing. Kids will be divided up into groups based on age and skill.

Activity	Day	Date	Time	R/NR	Skip Date
36677-A1	TU	1/16-2/20	7:30-8:45pm	\$170/\$175	
36677-A2	TU	3/5-4/16	7:30-8:45pm	\$170/\$175	3/26

## Kids First Basketball Fundamentals

Ages 5-12

Let's hoop it up! Players will be taught new basketball skills and safety techniques to make them game ready. There will be skills contests, championship games and techniques taught on shooting, dribbling, passing, floor spacing, basketball safety and sportsmanship. Kids will be divided up into groups based on age and skill.

Activity	Day	Date	Time	R/NR	Skip Date
32120-A1	TU	1/16-2/20	6:15- 7:30pm	\$170/\$175	

**Location: Cherry Hill School Gymnasium (Entry N)**

32120-A2	SU	3/10-4/21	10:15-11:30am	\$170/\$175	3/31
----------	----	-----------	---------------	-------------	------

**Location: Lincoln-Way West High School Field House**



KIDS FIRST SPORTS SAFETY INC.

## Kids First Flag Football Fundamentals

Ages 5-12

Cherry Hill School Gymnasium (Entry N)



Are you ready for some football? Combining flag football fundamental preparation with flag football games. Coaches will teach football techniques with body balance and safety positioning, giving a player confidence to enjoy the game of football. The first two weeks are dedicated to understanding the game through team competitive drills of how to play various positions. Flag Football games will be played once the coach feels everyone is ready to play. A championship game will conclude the program.

Activity	Day	Date	Time	R/NR	Skip Date
32122-A1	TU	3/5-4/16	5:00-6:15pm	\$170/\$175	3/26

## Kids First Multi-Sport Class

Ages 5-12

Cherry Hill School Gymnasium (Entry N)



This class combines sports, games, events and contests while learning safe fundamentals. Coaches plan a variety of sports and games ranging from competitive to non-competitive and leisure. Activities may include basketball, baseball, softball, soccer, dodge ball, badminton, flag football, track and field events, kickball, frisbee and more. Classes are coordinated weekly, which creates a new experience for all participants.

Activity	Day	Date	Time	R/NR	Skip Date
36674-A1	TU	3/5-4/16	6:15-7:30pm	\$170/\$175	3/26

## Kids First Flag Football 7 on 7

Ages 5-12

Lincoln-Way West High School Field House



This flag football program focuses on techniques like speed, quickness, body balance, first step directional movements, football safety awareness and sportsmanship. Players will learn passing, catching fundamentals, and receiver endzone techniques with a focus of player separation making it easier to score touchdowns. The program will conclude with a championship game!

Activity	Day	Date	Time	R/NR	Skip Date
36675-A1	SU	3/10-4/21	11:30am-12:45pm	\$170/\$175	3/31



## RESIDENT REGISTRATION BEGINS MARCH 7, AT 8:00AM

## NON-RESIDENT REGISTRATION BEGINS MARCH 14, AT 8:00AM

**NEW**

### NEW THIS YEAR...Online Registration

Registration will be open online until August 23rd.



**If you have questions about your resident account status, please contact guest services at (815) 485-3584.**

- If you are a New Lenox resident, please be sure you have updated your Household Account to resident and requested a login and password to enroll your child online.
- If you already participate in online registration for other programs, you only need to check the status of your resident account by logging into your online account and checking your residency status.
- Select the Activity Number of the class you want your child enrolled in.
- Pay the \$50 non-refundable registration fee along with a T-shirt fee of \$10 (if needed) by charge and select pay-in-full or installment billing. If you pay your full tuition payment at time of registration, the \$50 non-refundable registration fee will be waived.
- Should you choose installment billing, the credit card you enter will be processed for installments on the 15th of each month, August 2024 – April 2025. You will be subjected to a \$25.00 Service Charge if your card declines.
- Once you enroll your child, you will receive an enrollment receipt via email.
- If you currently do not have an ePact account, you will receive an email mid-June 2024.

### In-Person Registration

- Complete a registration form located at the front desk.
- A member of our guest services team will enroll your child in the preschool program of your choice.
- You will be asked to complete both sides of a payment agreement form.
- Pay the \$50 non-refundable registration fee by cash, check, or charge along with a T-shirt fee of \$10 (if needed)
- Our guest services team members will ask if you are paying in full or would like to add a credit card for monthly installment billing. If you pay your full tuition payment at time of registration, the \$50 non-refundable registration fee will be waived.
- Should you choose installment billing, the credit card you enter will be processed for installments on the 15th of each month, August 2024 – April 2025. You will be subjected to a \$25.00 Service Charge if your card is declined.
- \*Once you enroll your child, you will receive an enrollment receipt via email.
- \*If you currently do not have an ePact account, you will receive an email mid-June 2024.



**Due to priority registration of current 3-year-old Kiddie Kampus participants, there are limited spots available in the 4-year-old Kiddie Kampus program.**

# KIDDIE KAMPUS 2024-25

## Ages 3-4 (as of 9/1/24)

### Meet & Greet Days for Registrants

Thursday, September 5 and Friday, September 6

Classes begin the week of September 9, 2024 - May 16, 2025

### What does Kiddie Kampus offer its participants?

The New Lenox Community Park District offers preschool classes designed to develop social, emotional, and physical skills to ensure school readiness. A child's separation from parents and involvement with a non-family member is one of many major steps towards their development. Kiddie Kampus provides a safe and supportive environment for your child's first school experience while increasing their self-esteem and confidence through age-appropriate instruction. Covered during the year are color, shape and number recognition, an introduction to number concepts and letter recognition. Your child's quest for learning will be nurtured through creative play, building friendships, working individually, and cooperating as part of a group. These activities promote patience, sharing and the awareness that there is a whole world of people surrounding and supporting them. Songs, stories, activities, and games are used for reinforcement and fun.

## What requirements are necessary for Kiddie Kampus registration?

A child must be four (three for the 3-year-old program), on or before September 1, 2024. Children must meet the age requirements of a class. Noncompliance with age requirements can result in removal from the program. The Recreation Department reserves the right to request a birth certificate if the age of the child is in question. If a child is not the appropriate age for a class, he/she will be dropped from the program.

**\*\*Kiddie Kampus follows New Lenox School District 122's calendar year for all full days off except for our Winter Break. Kiddie Kampus is still in session when there is a half-day for New Lenox School District 122.**

**Due to priority registration of current 3-year-old Kiddie Kampus participants, there are limited spots available in the 4-year-old Kiddie Kampus program.**

*Thank you to our Sponsor Burns Photography*

ACTV#	AGE	LOCATION	DAYS	TIME	R/NR FULL PAYMENT	R/NR MONTHLY TUITION
64001-A1	4	Room 3	M/W/F	9:15am-11:30am	\$1,296/\$1,746	\$144/\$194
64002-A1	4	Room 3	M/W/F	12:30pm-2:45pm	\$1,296/\$1,746	\$144/\$194
64003-A1	4	Room 3	TU/TH	9:15am-11:30am	\$1008/\$1,323	\$112/\$147
64004-A1	4	Room 3	TU/TH	12:30pm-2:45pm	\$1008/\$1,323	\$112/\$147
64005-A1	4	Room 5	M/W/F	9:15am-11:30am	\$1,296/\$1,746	\$144/\$194
64006-A1*	4½	Room 5	M/W/F	12:30pm-3:00pm	\$1,404/\$1,908	\$156/\$212
63001-A1	3	Room 4	M/W/F	9:15am-11:15am	\$1,179/\$1,575	\$131/\$175
63002-A1	3	Room 4	M/W/F	12:30pm-2:30pm	\$1,179/\$1,575	\$131/\$175
63003-A1	3	Room 5	TU/TH	9:15am-11:15am	\$918/\$1,188	\$102/\$132
63004-A1	3	Room 5	TU/TH	12:30pm-2:30pm	\$918/\$1,188	\$102/\$132
63005-A1	3	Room 4	TU/TH	9:15am-11:15am	\$918/\$1,188	\$102/\$132
63006-A1**	3-4	Room 4	TU/TH	11:30am-1:15pm	\$846/\$1,089	\$94/\$121

## \*Finally Five 2024/2025

Age 4½ (Child must be turning five between 9/1/24-12/31/24)  
LCC (Room 5)

This Kiddie Kampus class is designed to benefit our older preschool children who just missed the kindergarten cut-off. We have created a class geared towards the older learners. This class will meet Monday, Wednesday, and Friday for two and a half hours per day.

## \*\*Tues./Thurs. Extended Day 2024/2025

Ages 3-4  
LCC (Room 4)

This program provides a secure and caring environment that fosters growth in verbal development, small/large motor skills and social skills. This program is specifically created to serve the Tuesday/Thursday preschoolers to extend their day, so they receive as many academic hours as their three-day-a-week counterparts in a two-day school week.





## Lunch Bucket Pals

**Ages 3-4**  
**LCC (Room 2) Entry E**

Are you hungry for some friends and fun? When lunch is over, let the fun begin! This program allows for an extra hour of play time when tied into our Kiddie Kampus Program. We will focus on gross motor skills and offer a variety of activities. All participants need to bring a bag lunch and drink with their name on it.

### Age 3

Activity	Day	Date	Time	R/NR	Skip Date
30009-A1	M/W/F	1/10-3/1	11:15am-12:15pm	\$138/\$143	1/15, 2/19
30009-A2	M/W/F	3/4-5/10	11:15am-12:15pm	\$149/\$154	3/25, 3/27, 3/29, 4/1,4/19

### Age 4

Activity	Day	Date	Time	R/NR	Skip Dates
30010-A1	M/W/F	1/10-3/1	11:30am-12:15pm	\$113/\$118	1/15, 2/19
30010-A2	M/W/F	3/4-5/10	11:30am-12:15pm	\$125/\$130	3/25, 3/27, 3/29, 4/1,4/19

## Preschool Plus

**Ages 3-4**  
**LCC (Room 4) Entry E**

Is your child ready for a more advanced preschool program? Preschool Plus, taught by a certified Preschool educator, is designed as an enrichment to our preschool experience by adding an extra challenge for students who are ready to take the next step. Your child will benefit from a curriculum strong in accelerated projects and fine and gross motor skills development. All participants need to bring a bag lunch and drink with their name on it.

### Age 3

Activity	Day	Date	Time	R/NR	Skip Date
30017-A1	M/W/F	1/10-3/1	11:15am-12:15pm	\$138/\$143	1/15, 2/19
30017-A2	M/W/F	3/4-5/10	11:15am-12:15pm	\$149/\$154	3/25, 3/27, 3/29, 4/1,4/19

### Age 4

Activity	Day	Date	Time	R/NR	Skip Dates
30018-A1	M/W/F	1/10-3/1	11:30am-12:15pm	\$113/\$118	1/15, 2/19
30018-A2	M/W/F	3/4-5/10	11:30am-12:15pm	\$125/\$130	3/25, 3/27, 3/29, 4/1,4/19

## A BRIGHTER FUTURE BEGINS AT HUNTINGTON!

**SAVE \$45**  
**ON AN ACADEMIC EVALUATION**



Reading



Math



Science



Writing



Study Skill



ACT & SAT

## INDIVIDUALIZED K-12 TUTORING AND TEST PREP IN-CENTER AND ONLINE

Take the Stress Out of Supporting Your Child's Learning Goals

### TEST PREP

- SAT/ACT
- Advanced Placement (AP)
- PSAT/NMSQT
- ISEE
- HSPT
- SSAT

### AVERAGE INCREASES

<b>2+ GRADE LEVELS</b> IN MATH AND READING**	<b>5.4 POINT INCREASE</b> ON ACT SCORE***
<b>229 POINT INCREASE</b> ON SAT SCORE***	<b>\$71,149.00 PER STUDENT</b> IN SCHOLARSHIP OFFERS***

**CALL 1-800 CAN LEARN**  
**MOKENA • 779-333-7580**

[HuntingtonHelps.com](https://HuntingtonHelps.com)



# DANCE PROGRAM



DYNAMIC DANCERS  
NEW LENOX

**New Lenox Community Park District's  
Dynamic Dancers**  
Instructed by: Jill Rector

## Pre-Ballet

**Ages 3-4**

**LCC (Room 2) Entry D**



An introduction to basic steps and positions. Your child will use their imagination while also improving strength, range of motion, coordination, and flexibility. Dancers are required to wear a leotard, tights and pink ballet shoes.

Activity	Day	Date	Time	R/NR	Skip Dates
38001-A1	M	1/15-4/29	4:00-4:30pm	\$169/\$174	2/19, 3/18, 3/25, 4/15

## Ballet & Tap Combo

**Ages 4-7**

**LCC (Room 2) Entry D**



Dance principles of ballet and tap are introduced in a playful, creative manner while ensuring proper skill development. Students will enjoy the gracefulness of ballet and quick-paced and entertaining sounds of tap. Taking a combination class will maximize the benefits for dancers. Dancers are required to wear a leotard, tights, pink ballet shoes, and black tap shoes (easy on Velcro closure preferred for ages 4-6).

Activity	Day	Date	Time	R/NR	Skip Dates
<b>Ages 4-6</b>					
38011-A1	M	1/15-4/29	4:30-5:15pm	\$206/\$211	2/19, 3/18, 3/25, 4/15
<b>Ages 4-5</b>					
38011-A2	TU	1/16-4/30	4:00-4:45pm	\$206/\$211	2/20, 3/19, 3/26, 4/16
<b>Ages 6-7</b>					
38011-A3	TU	1/16-4/30	4:45-5:30pm	\$206/\$211	2/20, 3/19, 3/26, 4/16

## Ballet & Jazz Combo

**Ages 7-9**

**LCC (Room 2) Entry D**



This class is an exciting and challenging class that covers the basics and works the disciplines of ballet while incorporating the fun and upbeat feel of stylized jazz and hip hop. The latest and up to date dance moves will be taught. Dancers are required to wear a leotard, tights, pink ballet shoes, and black tap shoes.

Activity	Day	Date	Time	R/NR	Skip Dates
38012-A1	M	1/15-4/29	5:15-6:00pm	\$206/\$211	2/19, 3/18, 3/25, 4/15

## Ballet, Tap & Jazz Combo

**Ages 8-9**

**LCC (Room 2) Entry D**



This combination class will build on foundational skills of ballet, the styles of tap, and upbeat, fast paced movement of jazz to help with coordination, flexibility and musicality. Fun dance routines and up to date music make kids excited to come back week to week. Dancers are required to wear a leotard, tights, pink ballet shoes, and black tap shoes. Black jazz shoes are optional.

Activity	Day	Date	Time	R/NR	Skip Dates
38013-A1	TU	1/16-4/30	5:30-6:15pm	\$206/\$211	2/20, 3/19, 3/26, 4/16

## Ballet

**Ages 10 & up**

**LCC (Room 2) Entry D**



Come enjoy the excitement and beauty of classical ballet! This class will focus on ballet terminology and technique through the execution of barre work, center and across the floor exercises. Your child will have a clear understanding of body alignment, movement quality, carriage of upper body and flexibility. Dancers are required to wear a leotard, tights and pink ballet shoes.

Activity	Day	Date	Time	R/NR	Skip Dates
38026-A1	TU	1/16-4/30	6:15-7:00pm	\$206/\$211	2/20, 3/19, 3/26, 4/16

## Tap

**Ages 10 & up**

**LCC (Room 2) Entry D**



Tap dancers have the unique opportunity to be musicians and dancers at the same time. This class will teach musicality and rhythm skills through tap technique and combinations. This is a fun and energetic class that will have your feet moving! Dancers are required to wear leotard, tights or leggings and black jazz style tap shoes preferred.

Activity	Day	Date	Time	R/NR	Skip Dates
38025-A1	TU	1/16-4/30	7:00-7:30pm	\$169/\$174	2/20, 3/19, 3/26, 4/16

## Hip Hop

**Ages 10 & up**

**LCC (Room 2) Entry D**



This class is a basic introduction to hip hop and jazz funk style dance. The class will include hip hop technique and choreography, and of course freestyle improvisation! We will have a blast dancing to age appropriate music and learn moves every dancer will enjoy. Dancers are required to wear workout attire and black jazz shoes.

Activity	Day	Date	Time	R/NR	Skip Dates
38024-A1	TU	1/16-4/30	7:30-8:15pm	\$206/\$211	2/20, 3/19, 3/26, 4/16

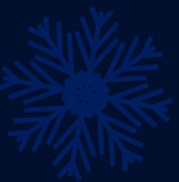




Presents

# *The Ice Skating Rink at Christmas in The Commons*

**December 2 - December 31**



Show us your pictures at  
the ice skating rink during  
Christmas in the Commons



## *#DecemberSkateDays*



# GYMNASTICS & CHEERLEADING



## FlipStar Gymnastics Academy Classes

1906 Ferro Drive, New Lenox, IL 60451



## Flipstar Parent Tot

Ages 2-3½



This is an interactive class between parent and child where the child will develop physically and socially. During the class, parents will assist the child as they work through a circuit of gymnastic skills on equipment designed for their tiny bodies. Warm-up activities, balance, climbing, swinging, and jumping are a few of the activities your little one will enjoy.

Activity	Day	Date	Time	R/NR
37360-A1	TU	1/9-2/27	9:00-9:45am	\$122/\$127
37360-A2	TU	3/5-4/30	9:00-9:45am	\$122/\$127

## Flipstar Preschool Gym

Ages 3½-5

The structure of this class will expose young gymnasts to basic gymnastics skills while building confidence, independence and learning skills. For most young gymnasts, this is their first experience without supervision. The one hour class will follow a circuit format, while learning skills such as rolls, cartwheels, strength, and flexibility. Coaches are patient and will correct with positive reinforcement.

Activity	Day	Date	Time	R/NR
37361-A1	W	1/10-2/28	9:00-9:55am	\$147/\$152
37361-A2	W	3/6-4/24	9:00-9:55am	\$147/\$152



## Ignite Cheer

Ages 4-14

LCC (Room 1) Entry C



The Ignite Cheerleading program is designed to provide a fantastic introduction to the world of cheerleading for your athlete. Join us and watch your athlete develop level-appropriate skills in cheers, dance, jumps, motions, and beginner stunts. Our 55-minute classes are held once a week, allowing athletes to learn and have fun in a structured environment. Our experienced coaches follow a detailed lesson plan to ensure that every student receives personalized attention and progresses at their own pace. The highlight of each session is the final class, where students showcase everything they have learned. It's a moment of pride and accomplishment for both athletes and their families. Participation in the Ignite In-House Recreational Competition is optional but highly encouraged. If your athlete chooses to compete, there is a \$55 competition fee, a \$165 uniform fee, and athletes can use the same uniform until they outgrow it, typically lasting up to two years. To provide you with all the necessary information, one week prior to the first class, Ignite will send you a welcome email to explain the additional costs for competition, uniform requirements, practice expectations, and provide instructions on how to register for their roster.

Join Ignite Cheerleading Program and let your athlete experience the excitement and camaraderie of cheerleading while building essential skills and confidence. We look forward to having your athlete as part of our team!

### Ages 4-6

Activity	Day	Date	Time	R/NR	Skip Date
34590-A1	M	1/8-4/22	6:00-6:55pm	\$170/\$175	2/19, 3/25

### Ages 7-14

Activity	Day	Date	Time	R/NR	Skip Date
34590-A2	M	1/8-4/22	7:00-7:55pm	\$170/\$175	2/19, 3/25



### Drop-In Teen Open Gym

Ages 12-17

Lincoln-Way West High School Field House

Get your friends together and enjoy a fun night with an open court! Pay at the door. To participate, a signed Parent Permission Slip must be submitted to staff at the Field House prior.

Activity	Day	Date	Time	LWR/NR
35531-A1	F	1/12-5/20	6:00-9:00pm	\$10/\$15 per night

### Skip Day Information

- Scan the code for the Lincoln-Way Field House and Fitness Center monthly schedules.
- The Field House hours may end earlier due to lack of attendance.
- Due to circumstances beyond our control, additional skip days may be added. These dates will be posted as we are notified.



# Coming Soon

## Hibernia Park Phase II



ADA Compliant Boat Dock



New Splash Pad



Trail with Fitness Equipment



Putting Green

# and more!



# SPECIAL EVENTS

## Mom & Son Nerf Battle



Age 5 and Older

LCC (Room 1 & 2) Entry C

Time to find your Nerf toys, ammo, and have an all-out Nerf war! We will provide the "battlefield" and there will be various battle types including mom's vs sons! Pizza lunch and beverages will be provided. An adult is required to stay for this event, and everyone will need to provide their own nerf blasters to go into battle with!

**Registration deadline is Friday, January 19.**

Activity	Day	Date	Time	R/NR
32175-A1	SU	2/4	11:00am-1:00pm	\$18/Child
32175-A2	SU	2/4	11:00am-1:00pm	\$12/Adult

## Flashlight Clover Hunt



Ages 3-11

Firefighters Park

Those silly Leprechauns left behind hundreds of clovers to find! Join our staff at Firefighters Park and help us find the clovers! There may even be a few specially marked clovers for a prize. Dress for the weather as this is an outdoor event and be sure to bring something to hold all your collected clovers! No restroom facilities available. Hunts begin promptly at their scheduled times.

Ages	Day	Date	Time
3-5	F	3/1	6:15pm
6-11	F	3/1	6:30pm



## Hop Till You Drop!

Ages 4-10

LCC Rooms 1 & 2

Join us for a hoppy time! Each child will receive a bag for collecting prizes and 10 tickets. These tickets will be traded in to play our games over a 45-minute timeframe. Once you are out of tickets, you are finished and will leave. The games provided will be a variety of carnival style games geared for ages 4-10. Prizes will be awarded for playing and you are guaranteed to leave with a bag full of goodies! Don't forget to catch a picture with the Easter Bunny on your way out! Although this event is free, you must register your child for the timeframe you would like to attend. A parent must stay with the child.

**Registration deadline is Friday, March 15.**

Activity	Day	Date	Time
38541-A1	SU	3/24	9:45am-10:30am
38541-A2	SU	3/24	10:35am-11:20am
38541-A3	SU	3/24	11:25am-12:10pm

## Touch-a-Truck

All Ages

Walker Country Estates Park



Climb on and explore your favorite vehicles including fire engines, police cars, and construction trucks while you rub elbows with your hometown heroes. It will be a day that will be remembered! Parental supervision is required, and cameras are highly recommended! Please note that this event includes many loud noises, horns, and sirens. No registration required! Concessions will be available. If you have a truck or piece of equipment you would like to include in this event, please email Brooke at [bkrol@newlenoxparks.org](mailto:bkrol@newlenoxparks.org) for more information.

Day	Date	Time
SA	5/4	10:00am-Noon

## Bark in the Park

All Ages

Walker Country Estates Park



Unleash the good times with your four-legged friends at our Walker Park by enjoying an assortment of pet vendors and activities! All dogs MUST be kept on a leash. No retractable leashes allowed! There will be best trick and costume contests for your dog to enter with a chance to win prizes! The last call for contest sign-ups is 11:00am. We are looking for dog related vendors. If you are interested, please contact Brooke at [bkrol@newlenoxparks.org](mailto:bkrol@newlenoxparks.org).

Day	Date	Time
SU	5/19	10:00am-Noon





## Pool Party Rentals

**All Ages (Must be 21 to rent)**

### Lincoln-Way Central High School Aquatic Center

We offer pool party rentals at Lincoln-Way Central High School's Aquatic Center to celebrate your next occasion. A choice must be made for either the shallow or deep end of the pool or both for an additional fee. The upper level (balcony area) may also be rented for one hour. For availability call the Park District at (815) 485-3584.

#### Saturday

2:30-3:30pm  
3:30-4:30pm  
4:30-5:30pm  
5:30-6:30pm

#### Sunday

11:00am-Noon  
Noon-1:00pm  
1:00-2:00pm  
2:00-3:00pm

#### Fee:

\$344/LWR • \$354/NR per hour  
(Fee includes lifeguards and LW rental fee)  
\$40/LWR • \$50/NR per hour for balcony rental

## Athletic Birthday Parties

**All Ages (Must be 21 to rent)**

### Lincoln-Way Central High School Field House

We offer Field House court rentals at Lincoln-Way Central to host your next event. Some equipment available for parties includes basketball, floor hockey, T-ball, and soccer. Party area (lobby) for eating and opening presents is available for an additional charge. For available dates and to schedule your party, please call the Administration Building at (815) 485-3584.

#### Day Time

F 6:00-9:00pm  
SA 1:00-4:00pm  
SU 9:00am-1:00pm

#### Fee:

\$75/LWR • \$85/NR per hour of Gym space  
\$35/LWR • \$40/NR per hour to utilize Lobby space



## Batting Cage Rental

**All Ages (Must be 21 to rent)**

### Lincoln-Way Central High School Field House



The batting cages are open to the public for individuals and teams to work on hitting and pitching. Participants must provide their own equipment for the rental. Limit of two batters in cage at a time. The adjacent court may be used for throwing and catching ONLY. For available dates and to schedule your rental, please call the Administration Building at (815) 485-3584.

#### Activity LWR/NR

37140-A1 \$55/\$75 per hour

## Court Rental

**All Ages (Must be 21 to rent)**

Looking to get extra practice for your team or reserve an entire court for a group of friends? Courts are available at the Field House of Lincoln-Way West and Lincoln-Way Central. For available dates and to schedule your rental, please call the Administration Building at (815) 485-3584.

Activity	Day	Time	LWR/NR
37140-A1 (Central)	M, W-F	6:00-9:00pm	\$55/\$75 per hour
	SA	1:00-4:00pm	
	SU	9am-1pm	
37140-A2 (West)	M, W-F	6:00-9:00pm	\$55/\$75 per hour
	SA	1:00-4:00pm	
	SU	9am-1pm	



We do not show our rental facilities if the room is currently occupied. Therefore, we suggest you call ahead prior to requesting to view the facilities.

To connect to our WiFi network at the Administration Building and Lions Community Center, choose the network named 'NLCPDpub' and use the password 'WPA#public842'.

## ROOM RENTALS

Rentals are available to both New Lenox residents and nonresidents. Participants can bring their own food and beverages. However, alcohol is not permitted.

- Room 1: Holds up to 130 people (\$100/hour)
- Room 2: Holds up to 50 people (\$80/hour)
- Rooms 1 & 2: Holds 180 people w/o dance area (\$125/hour)
- Bi-Centennial Room: Holds up to 50 people (\$80/hour)
- All-Purpose Room: Holds up to 60 people (\$100/hour)

A \$250 security deposit is required to reserve your date. Each room rental is required to pay a set-up and tear-down fee of \$30. (If renting LCC Rooms 1 & 2, the fee will be \$55.)

**Nonresident Fee: Additional \$50 will be added to the total cost of the Room Rental.**

## BANQUET RENTALS

Beverages and alcohol must be provided by our own bar. To have the bar, the banquet will need to have a minimum of 50 guests. Rentals must be made 14 days in advance and a \$250 security deposit is required to reserve your date. Full payment and layout are due 14 days prior to event. We offer six banquet packages for you to choose from and the choice of your own caterer.

Package No.	Duration	Package Includes
1	4 hrs*	<ul style="list-style-type: none"> <li>• \$100/hr Banquet Hall Rental</li> <li>• Minimum of 50 guests</li> <li>• Cash Bar (\$250 minimum)</li> </ul>
2	4 hrs*	<ul style="list-style-type: none"> <li>• \$100/hr Banquet Hall Rental</li> <li>• Minimum of 50 guests</li> <li>• \$5/person pop only</li> <li>• Cash Bar (\$250 minimum)</li> </ul>
3	4 hrs*	<ul style="list-style-type: none"> <li>• \$100/hr Banquet Hall Rental</li> <li>• Minimum of 50 guests</li> <li>• Cash Bar (\$250 minimum)</li> <li>(Tab paid at conclusion of event)</li> </ul>
4	5 hrs	<ul style="list-style-type: none"> <li>• \$16/person (Age 5 &amp; under free)</li> <li>• Minimum of 100 guests (Ages 5 and under not included in min.)</li> <li>• Beer, wine and pop</li> <li>• Cash Bar for mixed drinks</li> <li>• Bar closes for an hour during dinner</li> </ul>
5	5 hrs	<ul style="list-style-type: none"> <li>• \$24/person (Age 5 &amp; under free)</li> <li>• Minimum of 100 guests (Age 5 and under not included in min.)</li> <li>• Full Bar</li> <li>• Bar Closes for an hour during dinner</li> </ul>
6 (Room 2 Only)	3 hrs min	<ul style="list-style-type: none"> <li>• \$75/hr Banquet Hall Rental</li> <li>• Maximum of 50 guests</li> <li>• Cash Bar (\$150 min.)or Customized Bar Tab</li> </ul>



## Are you looking for a wonderful and affordable way to host your next outdoor celebration?

The New Lenox Community Park District offers shelter rentals at several park sites, all of which are developed with playground equipment! Residents and nonresidents can rent the Park Shelters shown below.

### Rentals for 2024 Begin on Tuesday, January 2, 2024.

Park Shelter Rental costs include use of electric and shelter rental. Please remember that these are public parks and open space will remain open to the public. In order to be approved to bring in an inflatable (no water inflatables allowed; for a full list of prohibited items please visit [newlenoxparks.org](http://newlenoxparks.org)) onto Park District property; you MUST supply a Certificate of Insurance (COI) by Operating Vendor with a \$1,000,000.00 policy; naming the New Lenox Community Park District as additional insured with 701 W. Haven Avenue, New Lenox, IL 60451 as the address and include a copy of the vendor's permit to conduct business. Once the COI and Business Permit is received the renter will be allowed to have the inflatable on Park District property; this MUST be supplied prior to your event. These documents may be mailed to the Park District address above or faxed to (815) 485-3589 with ATTN: Park Rentals.

- Park Rentals are available from Apr. 15-Oct. 31
- Hours of Operation: 9:00am-8:00pm
- All parks are ADA accessible

\*A security deposit of \$250 and rental fee is required for all Park Shelter Rentals at time of reservation.

### Cancellation policy within the 14-day period prior to the rental date:

- 8-14 days prior: Security deposit is retained. The rest will be refunded within a period of 30 days.
- 7 days or less: Security deposit plus 50% of the rental fees will be retained. The other 50% will be refunded to the signee within a period of 30 days.

### Park Shelters Available to Rent:

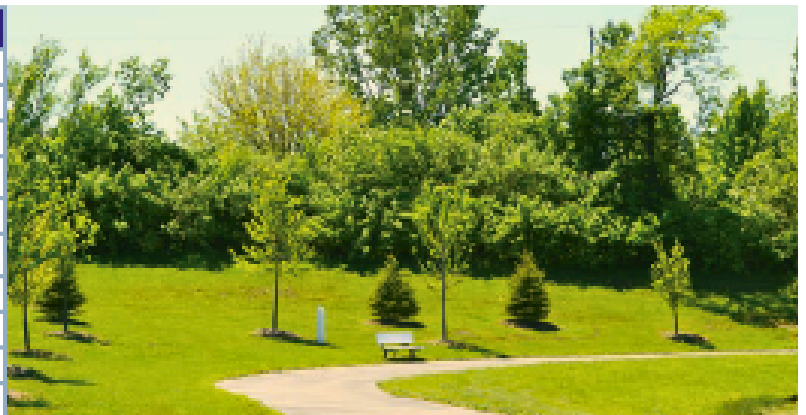


Park Name	Location	Shelter size/Seating
Cherry Hill (No alcohol or inflatables)	205 Kingston Dr.	24 ft. x 36 ft. / Seating for 32
Firefighters	1 Manor Drive	30 ft. x 60 ft. / Seating for 64
Haines Wayside	184 Haines Avenue	30 ft. x 60 ft. / Seating for 80
Hibernia (No alcohol or inflatables)	1598 Eagle Circle	20 ft. x 20 ft. / Seating for 16
Leigh Creek South (Available after June 5) (no alcohol or inflatables)	2400 Knightsbridge Lane	24 ft. x 36 ft. / Seating for 40
Sharon's Bay	805 Westwind Drive	24 ft. x 36 ft. / Seating for 40
Stonebridge (After 2:00pm on weekends)	1601 Nelson Road / 1802 Stonebridge Dr	30 ft. x 55 ft. / Seating for 48
Wildflower	124 Cherry Hill Road	20 ft. x 20 ft. / Seating for 16
Resident: \$175 • Nonresident: \$225		

\*A refundable security deposit of \$250 and rental fee is required for all Park Shelter Rentals at time of reservation.

### Park Trail Guide:

Site	Distance	#laps/1mile
Bristol Park	.51 miles	2
Countryview/Royal Meadows Park	.52 miles	2
Freedom Park	.31 miles	3.5
Hibernia Park	.57 miles	2
Leigh Creek South Park	.30 miles	3.5
Lions Den Park	.29 miles	3.5
Palmer Valley Park	.35 miles	3
Sharon's Bay/Crystal Springs Parks	.42 miles	2.5
Sky Harbor Park	.28 miles	4
Walker Country Estates Park	.26 miles	4



# PARK & FACILITY LOCATIONS

## 1. AEROHAVEN PARK

511 Glenn Drive

## 2. BENTLEY/TYLER

### ATHLETIC FIELDS

Illinois Highway, East of Cedar Rd.

## 3. BRISTOL PARK

2178 Bristol Park Road

## 4. CHERRY HILL PARK

205 Kingston Dr.

## 5. CHESTNUT POINTE PARK

3037 Chestnut Pointe Dr

## 6. COUNTRYVIEW/ROYAL

### MEADOWS PARK

2200 Jackson Branch Drive

2233 Daniel Lewis Drive

## 7. CRYSTAL SPRINGS PARK

2398 Bluestone Bay Drive

## 8. FIELDSTONE PARK

115 Wind Crest Lane

## 9. FIREFIGHTERS PARK

1 Manor Drive

## 10. FITNESS COURT

Haven Ave. & Gear Dr.

## 11. FREEDOM PARK

470 Charleston Drive

## 12. HAINES WAYSIDE PARK

184 Haines Avenue

## 13. HEATHER GLEN PARK

1900 Heather Glen Drive

## 14. HIBERNIA PARK

1598 Eagle Circle

## 15. HIGHLANDS PARK

1011 Flagstaff Lane

## 16. JACOB LOWELL PARK

1221 E. Illinois Highway

## 17. LAUREL MEADOWS PARK

629 E. Fourth Ave

## 18. LEIGH CREEK SOUTH

2400 Knightsbridge Lane

## 19. LIONS DEN PARK

520 S. Cedar Road

## 20. MARTINO JR. HIGH

### ATHLETIC FIELDS

731 East Joliet Highway

## 21. NELSON CAMPUS PARK/FIELDS

Nelson and Laraway Roads

## 22. NEUFAIRFIELD PARK

2509 Saddle Ridge Ct

## 23. PALMER VALLEY PARK

2901 Tanaga Basin

## 24. PRAIRIE RIDGE PARK

15881 Pond View Street

## 25. RON ROB ATHLETIC FIELDS

881 Country Creek Drive

## 26. R.S. CORCORAN PARK/ VETS FIELD

560 Vine Street

## 27. SANCTUARY GOLF COURSE

485 North Marley Road

## 28. SCHOOLHOUSE MANOR PARK

1841 Cornell Drive

## 29. SHARON'S BAY PARK

805 Westwind Drive

## 30. SKY HARBOR PARK

2360 Alta Vista Drive

## 31. SPENCER CAMPUS

### ATHLETIC FIELDS

Spencer Rd.; North of Laraway Rd.

## 32. SPENCER PARK

1099 S. Spencer Road

## 33. STONEBRIDGE PARK

1601 Nelson Road / 1802 Stonebridge Drive

## 34. TAYLOR GLEN PARK

2712 Northern Lights Way

## 35. THUNDER RIDGE PARK

3218 Apache Drive

## 36. WALONA PARK

200 Walona Avenue

## 37. WALKER COUNTRY ESTATES PARK

401 Lenox Street

## 38. WATERCHASE PARK

2185 Water Chase Drive

## 39. WILDFLOWER PARK

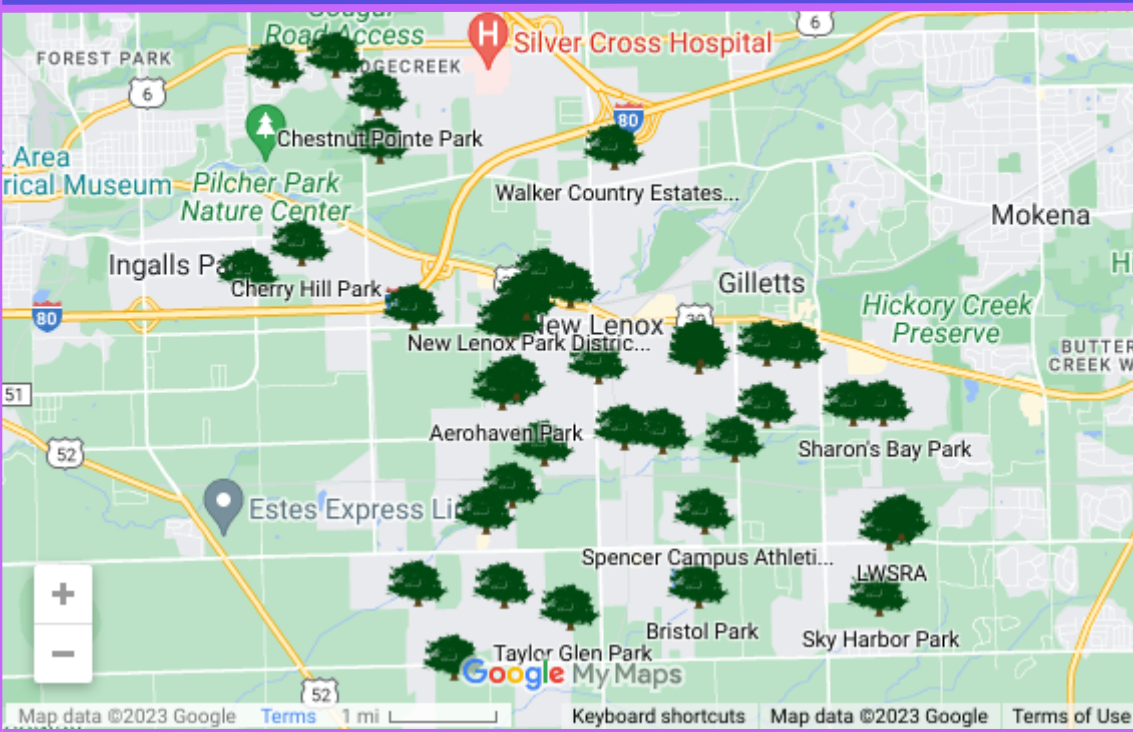
124 Cherry Hill Road

## 40. WILDWOOD PARK

605 W. Joliet Highway

## 41. WINDERMERE TOT LOT

911 Chelsea Court



A. Lions Community Center

B. Administration Building

C. Maintenance Facility

D. Lincoln-Way Central H.S.

E. Lincoln-Way West H.S.

F. Bentley-Tyler Schools

G. Cherry Hill School

H. Haines School

I. Liberty Jr. High School

J. Martino Jr. High School

K. Nelson Campus

L. Oster-Oakview School

M. Spencer Campus

N. Lincolnway Special Recreation

Association



PARK & FACILITY AMENITIES		ACRES	SPECIAL REC. CTR./PARK	BASEBALL	SOFTBALL	BASKETBALL COURTS	CONSERVATION AREA	FISHING	FITNESS EQUIPMENT	FOOTBALL FIELDS	DISC GOLF	TURF COURT GAMES	ICE SKATING/SLEDDING	PARKING LOT	SHELTER	PLAYGROUND EQUIP.	WATER PLAY	SOCCER	VOLLEYBALL	WALKING PATHS	TENNIS / PICKLEBALL	SKATEBOARDING	UNDEVELOPED
1	AEROHAVEN PARK	2.8														•							
2	BENTLEY/TYLER ATHLETIC FIELDS	30		•										•	•								
3	BRISTOL PARK	15.5												•		•				•			
4	CHERRY HILL PARK	5												•	•	•		•					
5	CHESTNUT POINTE PARK	1.1													•	•							
6	COUNTRYVIEW/ROYAL MEADOWS PK.	16.6					•							•	•	•				•	•	•	
7	CRYSTAL SPRINGS PARK	36					•	•				•		•	•	•				•			
8	FIELDSTONE PARK	5														•							
9	FIREFIGHTERS PARK	7.3												•	•	•							
10	FITNESS COURT	.25							•														
11	FREEDOM PARK	7.7				•		•						•	•	•				•			
12	HAINES WAYSIDE PARK	10.75									•		•	•	•	•			•				
13	HEATHER GLEN PARK / LWSRA	5.5	•											•									
14	HIBERNIA PARK	13.4						•						•	•	•	•		•	•			
15	HIGHLANDS PARK	.5													•	•							
16	JACOB LOWELL PARK	6		•	•	•								•	•	•							
17	LAUREL MEADOWS PARK	1.9			•																		
18	LEIGH CREEK SOUTH PARK	3.6	•		•	•			•			•		•	•	•				•			
19	LIONS DEN PARK	10			•	•								•	•	•			•	•			
20	MARTINO JR. HIGH ATHLETIC FIELDS	11								•				•	•								
21	NELSON CAMPUS PARK/FIELDS	20.4				•		•						•	•	•		•					
22	NEUFARFIELD PARK	5									•				•	•							
23	PALMER VALLEY PARK	15.5			•	•		•						•	•	•				•			
24	PRAIRIE RIDGE PARK	2.5												•	•	•							
25	RON ROB ATHLETIC FIELDS	4.6			•									•									
26	R.S. CORCORAN PARK/VETS FIELD	4			•									•	•	•							
27	SANCTUARY GOLF COURSE	235					•							•	•								
28	SCHOOLHOUSE MANOR PARK	10					•						•	•	•	•				•			
29	SHARON'S BAY PARK	12.7			•		•	•						•	•	•			•	•			
30	SKY HARBOR PARK	4							•			•		•	•	•				•	•		
31	SPENCER CAMPUS ATHLETIC FIELDS	35						•						•		•		•					
32	SPENCER PARK	2				•								•	•	•							
33	STONEBRIDGE PARK	18.5			•									•	•	•		•					
34	TAYLOR GLEN PARK	3														•							
35	THUNDER RIDGE PARK	.7													•	•							
36	WALONA PARK	7			•									•	•	•							
37	WALKER COUNTRY ESTATES PARK	12.9				•		•	•	•				•	•	•	•			•			
38	WATERCHASE PARK	3																					•
39	WILDFLOWER PARK	4.4												•	•	•			•	•			
40	WILDWOOD PARK	4				•								•	•	•			•				
41	WINDERMERE TOT LOT	.75				•										•							



701 W. Haven Avenue, New Lenox, IL 60451



Scan with your smartphone  
to view online.



New Lenox Friends of the Parks

**Saturday**  
**April 20, 2024**  
**8:00am**

**Sanctuary Golf Course**



SCAN ME

