



FALL 2022

PROGRAM GUIDE

Registration Begins Monday, August 8
newlenoxparks.org



FALL

INTO

FUN





EMPTY BOWLS

Help Us Fight Hunger

September 17, 2022

During Last Call Before Fall

2:00-6:00pm

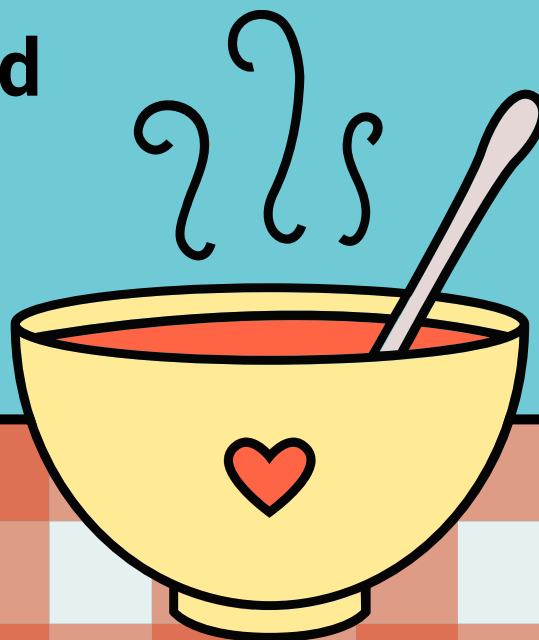
New Lenox Commons



Entry Fee \$15

**(surcharge added
for credit/debit)**

**Scan to purchase
tickets**



**Sample unlimited soup from local restaurants &
support the New Lenox Food Pantry!**



GREETINGS FROM YOUR NEW LENOX COMMUNITY PARK DISTRICT!

I always look forward to the crisp fall weather and the programs that come along with it! This fall is full of fun, new and exciting programs for the community.

Your Park District knows this feeling, so we gear our programs to not only provide enjoyment to our youth, teens and adult patrons, but also our working families with BEFORE and AFTER School Programs, known as "ACES." Don't miss out on our newest holiday events, kids and tweens will enjoy the Monster Mash Bash, Elf Olympics, and the Jingle Mingle! We also have many unique bus trips to choose from including a Fall Jewelry, Fashion & Accessories Show, Haunted History Tour of Chicago, a variety of shows and musicals, and a Christmas Walk in Geneva. Take a trip with us!

Our Friends of the Parks Foundation will once again hold Empty Bowls event at the Village of New Lenox's Last Call Before Fall Saturday, September 17, at 2:00pm in the New Lenox Commons. Profits from this event will support the New Lenox Township Food Pantry. They will also host their annual Meta-Mucil 55+ Golf Outing on Tuesday, October 11. Registration for both of these events is available on their website, nlfop.square.site.

For coaches looking to add practice time for their teams we are now offering court rentals at Lincoln-Way West and Central's Fieldhouse and batting cage rentals at Lincoln-Way Central's Fieldhouse. Please call or visit our website for more details.

The Sanctuary Golf Course was as busy as ever this past Summer. The warm weather kept the driving range packed with new and experienced golfers, and the outings kept The Sanctuary staff very busy. Even though Summer is ending, make sure to check The Sanctuary website for available Fall driving range and tee times!

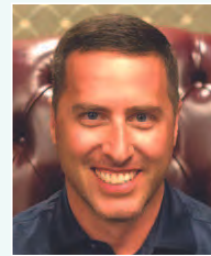
Your Parks Maintenance Department is actively ensuring that all of our 41 park sites are staying beautiful and clean! Sky Harbor Park opened this past July, in time for the Fourth! We are looking forward to hosting the Grand Opening this fall. We are also proud to announce that we have been awarded an OSLAD Grant in the amount of \$400,000 to help update one of our most frequented parks, Hibernia Park. We are excited to begin construction on this new phase of Hibernia Park! Without our hard-working staff and extremely supportive community, these amazing parks would not be possible. When you look through the list of parks in the back of our guide or website, why not try a new park, and meet new people in the community you live in.

Remember...try a new program, attend a new event and be active in your community!

Sincerely,
Ted Schulz
Park Board President

OUR MISSION

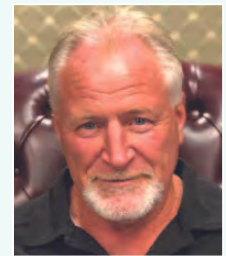
is to provide safe recreational opportunities through diverse programs, facilities and open space, with the overall goal being improvement of the quality of life in our community.



Ted Schulz, President



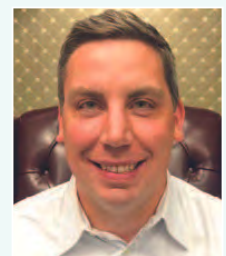
Brian Fischer, Vice President



Dale Larson, Secretary



Garry Kraemer, Treasurer



Mark Ott Jr., Commissioner

PARK BOARD MEETINGS

OPEN TO PUBLIC

Anyone wishing to address the Park Board must notify the Board in writing by noon on the Friday before the regular meeting. Meetings will be held at 6:00pm on the third Wednesday of the month at the Village of New Lenox (1 Veterans Parkway) in the Board Room - 2nd Floor.



OUR MISSION

is to provide safe recreational opportunities through diverse programs, facilities and open space, with the overall goal being improvement of the quality of life in our community.



NLCPD ADMINISTRATION BUILDING

701 W. HAVEN AVENUE, NEW LENOX, IL 60451

PH: (815) 485-3584 • FAX: (815) 485-3589

****Registration available at this location only.**

HOURS OF OPERATION:

Monday-Friday, 9:00am-5:00pm

Executive Services

Greg Lewis, CPRP, Executive Director

- Jacque Tuma, Deputy Director of Executive Services

Business Services Staff

Kathy Lynch, Director of Business Services

- Karen Acklin, Deputy Director of Business Services
- Jason Braglia, Deputy Director of Business Services
- Nicole Saltzman, Business Services Supervisor
- Laurie Jacobs, Business Services Generalist

Parks & Maintenance Staff

George Travnicek, Director of Parks Maintenance

- Ken Stephens, Parks Maintenance Assistant Director
- John Camp, Facilities Maintenance Supervisor
- Kip Kokal, Parks Maintenance Supervisor
- Gary Wilde, Parks Maintenance Supervisor
- Shaun Elder, Parks Maintenance Laborer
- Dylan Tobias, Parks Maintenance Laborer
- Miguel Garay-Ultras, Parks Maintenance Laborer
- Owen Sigrist, Parks Maintenance Laborer
- Larry Hensley, Parks Maintenance Laborer

Recreation Staff

Lea Pipiras, CPRP, Director of Recreation

- Olga Viano, CPRP, Deputy Director of Recreation
- Keith Blomberg, CPRP, Recreation Supervisor
- Kelly Matson, Recreation Supervisor
- Amy Maher, Recreation Supervisor
- Dominic Cooper, Recreation Supervisor
- Bethany Lerch, CPRP, Recreation Supervisor
- Brooke Krol, Office Coordinator
- Jeff Franson, Custodial Maintenance Supervisor
- Mark Moustis, Custodial Maintenance Laborer
- Deborah Barks, Custodial Maintenance Laborer



LIONS COMMUNITY CENTER

1 MANOR DRIVE, NEW LENOX, IL 60451 (Not a Mailing Address)

PH: (815) 485-3584 • FAX: (815) 485-5952

THE SANCTUARY GOLF COURSE

485 N. MARLEY ROAD, NEW LENOX, IL 60451 (Not a Mailing Address)

golfsanctuary.com

PH: (815) 462-4653 • FAX: (815) 462-4659

HOURS OF OPERATION:

Open Daily (weather permitting)

Robert Schulz, PGA, Director of Golf

- Ethan Bedsaul, PGA, Golf Course Assistant Director
- Ben McAdams, Golf Course Assistant Manager
- Bill McInerney, PGA, Golf Course Assistant Professional
- Michael Ledvina, Golf Course Food and Beverage Supervisor
- Madelyn Burdelik, Golf Course Food and Beverage Manager
- Douglas Eggert, GCSAA, Golf Course Superintendent
- Michael Wesolowski, Golf Course Assistant Director



Fall 2022

Please check Lincoln-Way
Community High School website
for Team Asset information at
lw210.org/page/asset



CREATE A CLASS

The Park District is looking for local hidden talent to instruct or lead various recreational classes. Do you like to set your own work schedule? Do you have a background in fitness, early childhood, craft design or any other special ability? If so, join our staff and contribute to "Quality Community Life" in New Lenox. We are always looking for new instructors with creative ideas. If you have a particular skill or are willing to lead activities, please call (815) 485-3584.

Commemorative Tree and Bench Program

Are you looking for a special way to honor a loved one or to commemorate a special event? The New Lenox Community Park District's Commemorative Tree and Bench Program is dedicated to planting a tree or placing a bench in honor of a loved one, organization or to celebrate your special occasion. There are a variety of trees that can be purchased and planted. Please keep in mind that trees may be purchased at any time but are only planted in the spring and fall and benches will be installed weather permitting. Please note that these trees and/or benches may be placed within a park site or at our Sanctuary Golf Course, but restrictions do apply. Each commemorative donation will be designated with a plaque honoring your request. For further information, please call (815) 485- 3584.

Reminder to Pet Owners

When visiting local parks with your pet, please remember that the Park District and Village ordinances require dogs to be leashed at all times. Owners are responsible for cleaning up any animal excrement from public property.

What is the S.T.O.P. PROGRAM?

S.T.O.P. stands for Stop Trashing Our Parks and is represented by our mascot, Bucky the Beaver. Bucky's mission is to keep our parks safe and free of vandalism. To help support Bucky's mission, cash rewards will be paid for information leading to the apprehension of park vandals (individuals providing information are not required to identify themselves). Hopefully, kids of all ages can relate to our friendly mascot and his mission.



Find us on Facebook,
Twitter, Instagram &
YouTube.



TABLE OF CONTENTS

Information Categories

T.E.A.M. Asset of the Month	4
Athletic Associations	10
Community News You Can Use	11
Commemorative Bench/Tree Program	5
Lincolnway Special Recreation Association	12
Mission Statement	4
New Lenox Fire Protection District	10
New Lenox Friends of the Parks	10

ONLINE REGISTRATION

Park Board	3
Park District Staff	4
Park District News	5
Park Map/Amenities	42-43
Park Partners	10
Park Policies	6
Park Shelter Rentals/Trail Guide	41
Parties and Rentals	39-41
President's Letter	3
Program Requirements	6

REGISTRATION INFORMATION & FORM

Sanctuary Golf Course	13
"STOP" Trashing Our Parks Program	5

Programs Offered

ACES	15
Spencer Trailblazers/Beyond the Bell	14
Adult Athletics	16
Adult Programs	20-21
Bus Trips	22-23
Children's Athletics	27-30
Children's Programs	24-26
Children's Basketball League	31
Dance	34
Fitness	19
Gymnastics/Cheerleading	35
Kiddie Kampus	32-33
Special Events	37-38
Tween Programs	36



PROGRAM REQUIREMENTS

- Children must be the correct age by 9/1/22, unless otherwise specified. In order to provide your child with the best possible recreational and/or learning experience, all our programs are planned according to the ages listed in our Program Guide.
- Although your child may turn the correct age during the session of a program, our age requirement date coincides with the school district's date to assist with the fundamental growth of the child in the age-appropriate programs and therefore would not be eligible for registration.
- Classes are for the registered child only, except for classes with an adult. Parents will drop child off at the designated location, you will not be able to remain in the classroom or gymnasium. This is in the child's best interest, as continual interruptions tend to affect participants' attention span and inhibit the establishment of peer relationships.
- All children must be potty-trained unless they are attending a class where an adult stays with them or is otherwise stated in the class description. Diapers are not permitted in independent classes unless stated in the class description.
- Please do not bring food to any class unless previously arranged.
- For your child's safety, all children enrolled in programs must be picked up from the specific door or program site by their parent(s) or designated guardian.
- For your child's safety, all children enrolled in the program must be escorted to and from the program by their parent/designated guardian. No child will be released from the program to anyone other than individuals from the pick-up list. Individual must provide a picture ID and sign a mandatory sign-in and sign-out form.

REFUND POLICY

No refunds are given: (1) once a program begins unless a replacement is found; (2) on material fees unless we cancel a program; (3) on bus trips; or (4) for special events or one-day programs. A full refund is issued if we cancel a program or trip.

- When a participant cancels out of a program, a full refund, less a \$5 service charge (per program), will be granted. A \$5 service charge will also be assessed on all program transfers.
- These requests will only be honored if the request is submitted three business days prior to the start of the program or activity.
- All refunds less than \$10 will be applied as a credit to the customer's account.
- Every effort will be made to process refunds within 30 days, but in some instances it may take longer.
- New Lenox Community Park District reserves the right to change program details at any time.

CANCELLATIONS

Staff reserves the right to consolidate, postpone, reschedule, or cancel any program due to changes in day, dates, times, instructor or insufficient enrollment. If program enrollment does not meet the minimum number of registrants, we try to cancel the program seven days prior to the start date or by the registration deadline.

For cancellations due to unforeseen circumstances (i.e., inclement weather, facility emergencies or scheduling conflicts), which are announced by Lincoln-Way District 210 or New Lenox School District 122 at facilities where Park District programs are scheduled, Park District programming will be cancelled as well. All attempts will be made to reschedule cancelled classes. However, the New Lenox Community Park District is sometimes unable to accommodate make-up classes and will not refund money in such instances.

PROGRAM BEHAVIOR POLICY

Participants are expected to exhibit appropriate behavior. The following guidelines have been developed to help make Park District programs safe and enjoyable for all participants. Additional rules may be developed for programs and athletic leagues as deemed necessary by staff.

- The New Lenox Community Park District reserves the right to terminate a party's participation in a Park District program due to that party's disruptive behavior or conduct.
- Show respect to participants and staff and take direction from staff.
- Refrain from using abusive or foul language or from causing bodily harm to self, other participants or staff.
- Show respect to equipment, supplies and facilities.

PROGRAM GUIDE DISTRIBUTION

To provide you the most up-to-date information, the Program Guides will be available online only at newlenoxparks.org. We continue to review guidelines to determine the best way to safely serve the community while fulfilling our mission of providing quality community life.

PHOTO DISCLAIMER

Registrants and participants permit to the taking of photos and videos of themselves and their children during Park District activities for publication and use as the Park District deems necessary.

LIABILITY

The New Lenox Community Park District is unable to assume responsibility for injuries, accidents or loss of personal property occurring during programs or activities, in parks or facilities. Such insurance would make programs and user fees prohibitive.



PROGRAM INFORMATION ICONS

Throughout the Program Guide, you will recognize icons adjacent to programs. These icons are to assist you with additional information.

- Programs that require a parent and child to attend are shown with this icon:



- The Park District runs programs for the community through a partnership with different businesses. They provide knowledgeable and background-checked instructors who will direct each program. Programs that are contracted are shown with this icon:



- Please note that for selected ticketed or special events as well as some ongoing programs, online registration is not available. Programs that do not allow online registration are shown with this icon:



AMERICAN DISABILITIES ACT (ADA)

A request for ADA modifications or assistance at a program is required at the time of registration. Please mark the ADA box on the Registration Form and call our Administration Building at (815) 485-3584. Early registration, along with a request for accommodation, is strongly suggested to assure that appropriate modifications are secured prior to the start of the program. We recommend at least four weeks' notice to have modifications in place.



REGISTRATION POLICIES

- A government issued birth certificate is required for all participants two (2) years and younger before registration will be accepted.
- Parents/guardians may register for immediate family members only. Each adult must sign the Registration Form.
- Phone-in registrations are not accepted.
- If there is a problem with your registration, we will contact you by phone or email. If we cannot reach you, the Registration Form will be returned by mail and your place in the program cannot be saved. Be sure to include a valid daytime phone number and e-mail on all Registration Forms.
- Registration is not complete until a printed confirmation or email receipt has been issued.
- The New Lenox Community Park District is not responsible for lost or late mail or faxes.
- All Registration Forms must be signed. Those without signatures will be returned to the sender, thereby jeopardizing registration and program placement.
- A \$25 service charge will be assessed on all rejected credit card payments for families utilizing our installment billing system and \$30 service charge on all returned checks.
- The New Lenox Community Park District reserves the right to suspend participation in activities of customers whose account is in "bad standing" until all fees are paid. Failure to pay may result in collection costs added to outstanding balances.

RESIDENT REGISTRATION (R)

Resident Registration and Online Registration will begin on Monday, August 8, at 9:00am at the Administration Building, 701 W. Haven Avenue.

Registration Forms are accepted as soon as our Program Guide is posted on our website, but will not be processed until Monday, August 8, at 9:00am. Early submission of registration does not guarantee enrollment in a program.

NONRESIDENT REGISTRATION (NR)

Nonresident participants can register for New Lenox Community Park District programs beginning Monday, August 15. Additional fees for nonresidents may apply. We do not charge a nonresident fee for special events or bus trips.

*See our Children's Basketball League
on page 31 .*





FIRST-TIME REGISTRATION

When registering for the first time, residents will need to provide proof of residency by showing proper documentation. Those documents include:

One Item from Category 1

- Most recent property tax bill
- Most recent mortgage statement (we do not accept mortgage coupon payment books)
- Signed and dated lease or letter from manager (on letterhead) and proof of last month's payment
- Mortgage closing statement (if you have moved in the last 30 days)

Two Items from Category 2

- Valid Illinois Driver's License or State I.D. Card
- Most recent gas, electric and/or water bill
- Most recent cable television bill, credit card bill and/or bank statement
- Voter Registration
- Vehicle Registration
- Current Public Aid Card

Nonresidents will need to provide a valid Driver's License or State I.D. Card at the time of registration.

PAYMENT

- Full payment must be paid to the New Lenox Community Park District at time of registration
- Cash, credit/debit cards or checks are acceptable forms of payment
- Checks should be made payable to New Lenox Community Park District or NLCPD
- We do not accept payments over the phone

SCHOLARSHIP PROGRAM

If you are a New Lenox resident and cannot participate for financial reasons, you may be eligible for financial aid. Please e-mail completed Financial Aid Application and supporting documentation to Olga Viano at oviano@newlenoxparks.org. Forms are located on our website under district information. All required documentation must be submitted with the completed application two weeks prior to the start of the program. Please note that the maximum household scholarship benefit is \$1,000 per year.

MILITARY DISCOUNT

We are pleased to offer a military discount for those who qualify. A Military Master Form must be filled out completely prior to receiving the military discount. For more information, please visit newlenoxparks.org/registration/.

In-District/Out-of-District Residents

- 50% Active-Duty Discounts – Discount applies to family members who reside in the same household.
- 25% for Veteran Discounts – Discount applies to family members who reside in the same household.

SIMPLE WAYS TO REGISTER

Online

- Begins Monday, August 8, at 9:00am for residents and Monday, August 15, at 9:00am for nonresidents
- Go to newlenoxparks.org and click on Online Registration
- Residents and nonresidents may create their own online account by clicking on "Need an Account?" However, residents who have NOT established residency will be charged nonresident fees (if applicable) for Park District programs until residency has been established. Nonresident fees are non-refundable. Review "First Time Registration" to see how to establish residency.

Mail-In/Drop-Off

- Place the completed and signed Registration Form with your payment in a sealed envelope and mail to:
- New Lenox Community Park District, 701 W. Haven Avenue, New Lenox, IL 60451
- One Item from Category 1 (New Families)
- Two Items from Category 2 (New Families)
- Or place in a Drop Box outside the following locations:
 - *Administration Building, 701 W. Haven Avenue
 - *Lions Community Center, 1 Manor Drive
- Mail-In/Drop-Off Registration is accepted as soon as our Program Guide is posted on our website and will be retained until registration begins on Monday, August 8, at 9:00am.

Email

- Email your completed and signed Registration Form with credit card information to geninfo@newlenoxparks.org
- Email Registration is accepted as soon as our Program Guide is posted on our website and will be retained until registration begins on Monday, August 8, at 9:00am.

Fax-In

- Fax your completed and signed Registration Form with completed credit card information to (815) 485-3589
- Fax-In Registration is accepted as soon as our Program Guide is posted on our website and will be retained until registration begins on Monday, August 8, at 9:00am.

Walk-In

- Register in person at the Administration Building, 701 W. Haven Avenue during regular business hours beginning on Monday, August 8, at 9:00am for residents and August 15, for nonresidents.

*See our fun Tween Programs
on page 36.*



***Please indicate for whom below.**

Please mark payment type: <input type="checkbox"/> CASH <input type="checkbox"/> CHECK <input type="checkbox"/> VISA <input type="checkbox"/> MASTERCARD <input type="checkbox"/> DISCOVER <input type="checkbox"/> AMERICAN EXPRESS	Billing Address Zip Code: _ _ _ _ _	Check or Money Order Payable To: New Lenox Community Park District "NLCPD" Mail To: New Lenox Community Park District 701 W. Haven Avenue New Lenox, IL 60451 Upon Receipt of Your Catalog Mail-In, Fax-In (815.485.3589) or Drop Off Your Registration.																
	Account Number: <table border="1" style="display: inline-table; border-collapse: collapse;"> <tr> <td style="width: 20px; height: 20px;"></td> <td style="width: 20px; height: 20px;"></td> <td style="width: 20px; height: 20px;"></td> <td style="width: 20px; height: 20px;"></td> <td style="width: 20px; height: 20px;"></td> <td style="width: 20px; height: 20px;"></td> <td style="width: 20px; height: 20px;"></td> <td style="width: 20px; height: 20px;"></td> <td style="width: 20px; height: 20px;"></td> <td style="width: 20px; height: 20px;"></td> <td style="width: 20px; height: 20px;"></td> <td style="width: 20px; height: 20px;"></td> <td style="width: 20px; height: 20px;"></td> <td style="width: 20px; height: 20px;"></td> <td style="width: 20px; height: 20px;"></td> <td style="width: 20px; height: 20px;"></td> </tr> </table>																	
	Expiration Date: ____/____ Security Code: _ _ _																	
	Cardholder Name: _____																	
	Billing Address: _____																	
<div style="display: flex; justify-content: space-between;"> Address City/State </div>																		
Amount of Charge: \$ _____																		
Authorized Signature: _____																		

(The NLCPD reserves the right to change a payment to reflect the correct fee.)



The New Lenox Community Park District is pleased to provide contact information for many of the organizations with whom we partner with. It is through the Park District's successful partnerships with these groups that we all contribute to improving the quality of life in the community of New Lenox.

AREA AGENCIES

Lincoln-Way Community High School District 210 (815) 462-2345
 New Lenox Chamber of Commerce (815) 485-4241
 New Lenox Cub Scout Packs 6, 49, 94 (815) 942-4450
 New Lenox Girl Scouts (815) 723-3449
 New Lenox Community Channel 6 (815) 462-6428

New Lenox Township (Dial A Ride) (815) 485-6431
 New Lenox Fire Protection District (Administration) (815) 463-4500
 New Lenox Library (815) 485-2605
 New Lenox Police (Administration & Non-Emergency) (815) 462-6100
 New Lenox School District 122 (815) 485-2169
 Senior Services Center of Will County (815) 723-9713
 Village of New Lenox (815) 462-6400

SCHOOL DISTRICTS AND NEW LENOX TOWNSHIP

The New Lenox Community Park District would like to extend a thank you to the school districts serving the area (122 and 210) and New Lenox Township. It is through the cooperation of the school board and administrative staff of these districts that we can offer more programs in satellite locations to members of the community. Thank you for allowing our programs to grow and enhance our community!

NEW LENOX YOUTH ATHLETIC ASSOCIATIONS

The Park District maintains the athletic fields; independent athletic associations run these programs. Registration is handled through each individual association and NOT the Park District. Listed below is the contact information provided to us from our Athletic Associations.

NL Soccer Association/Legacy Soccer Club
 newlenoxsoccer.org

NL Girls Softball
 (815) 258-7916 • nlgsa.org

NL Rebels Baseball
 newlenoxrebels.com

NL Mustangs Football
 newlenoxfootball.com

NLYFA Jr. Knights/Jr. Warriors Football
 nlyfa.com

2022 CPR CLASSES

New Lenox Fire Protection District

Please check the fire district's website at nlfire.com for monthly class dates and times. NLFPD is an authorized American Heart Association (AHA) Training Center providing courses in Adult CPR, Child CPR, Infant CPR, for Healthcare Providers and the laypersons.



All classes are at New Lenox Fire Station 1, 261 E. Maple Street, and begin at 8:30am unless otherwise noted on the website. Registration is required to attend.

For more information and to register, visit nlfire.com.

The Fire District conducts several other public events throughout the year. For information, contact the Fire and Life Safety Educator at (815) 463-4500 for dates and details.





A Matter of Balance



This program can help seniors improve their quality of life and remain independent. Participants learn to set realistic goals to increase activity, change their environment to reduce fall risk factors and learn simple exercises to increase strength and balance. Please call Daniel Martin, Safe Community Coordinator, for further information at (815) 462-6493 or via email at dmartin@newlenox.net.

Triad Meetings

The Manhattan-New Lenox TRIAD for Older Adults would like to invite older adults (age 50 and up) from the area to attend their monthly meeting. A major purpose of TRIAD is to develop, expand and implement effective crime prevention and health and safety educational programs for seniors in our community. TRIAD works to improve the quality of life for older adults by providing an opportunity for the exchange of information between public safety (police & fire), social services and seniors. There is no registration or membership needed to attend this or any of the TRIAD meetings. These meetings are for all older adults in and around our community. Please join us!

Day	Date	Time	Topic
TH	9/22	1:30-2:30pm	One Fall Could Change It All Expo

Location: New Lenox VFW 323 Old Hickory Rd., New Lenox, IL

TH	10/27	1:30-2:30pm	
TH	11/17	1:30-2:30pm	
TH	12/15	1:30-2:30pm	Holiday Party

Location: Will County Sherriff Office, 16911 W. Laraway Rd, Joliet IL.

If you have any questions, please contact:

- Marisa Schrieber, New Lenox Fire, (815) 463-4527
- Officer Kristine Kioltyka, New Lenox Police, (815) 462-6145



New Lenox Public Library Homebound Service

Adult

The Homebound Library Delivery Service at the New Lenox Library provides free library services to individuals who are residents within our district boundaries, have a current New Lenox Library card and are unable to physically come to the library. Delivery or pick up is available to individuals unable to come to the library due to mobility, health or disability barriers. Whether you are at home, in assisted living or in a nursing facility, you are eligible. For further information, please call the New Lenox Public Library Homebound Coordinator at (815) 485-2605, Ext. 134.



Donate used Cell Phones to “Cells for Seniors”

The cell phones are free to seniors and can only be used to access 911 in case of an emergency. Drop off your used cell phones at these New Lenox locations:

- Administration Building, 701 W. Haven Avenue
- New Lenox Township, 1100 S Cedar Road
- New Lenox Police Department, 200 Veterans Parkway

Friends Over 50 1340 WJOL

Friends Over 50 with Ed & Michelle Kerfin is a talk show dedicated to topics affecting everyone including financial, healthcare and lifestyle issues. This talk show is fun and informative and will always make you laugh. You never know who you will meet on the show. Tune in Fridays from 10:00am-1:00pm.

Need a Ride to One of our Programs?

Call the Transportation Service at the New Lenox Township at (815) 485-6431 for safe, affordable, and on-time rides for all New Lenox residents. Please visit newlenox.org/transportation-service for rates.



See our fun Bus Trips
on pages 22-23.



Lincolnway
SPECIAL RECREATION
ASSOCIATION

BUILDING A COMMUNITY WITHOUT LIMITS

About Us

Since 1976, the Lincolnway Special Recreation Association (LWSRA) has provided recreation services for individuals with disabilities through a cooperative agreement with its seven member park districts: Frankfort, Frankfort Square, Manhattan, Mokena, New Lenox, Peotone and Wilmington Island Park Districts. Participants enjoy active, healthy and more independent lifestyles through a variety of recreational and social opportunities.

Benefits of Recreation

- ✓ Discover new experiences & interests
- ✓ Build confidence & friendships
- ✓ Socialize in an inclusive setting



Our services



Social Programs

Engage with similar-aged peers in a structured but fun-filled social environment. Staff create opportunities to develop skills and try new experiences. Popular programs include dances, bingo, trivia, community trips, adult day program, summer camps and Saturday youth groups.



Interest-based Programs

Find programs centered around fitness or cultural arts. Try competitive Special Olympics and adapted sports or fitness outlets such as strength & conditioning and introductory sports skills. Enjoy creative arts through cooking, drawing & painting, dancing and more!



Inclusion

Park Districts welcome participation in all programs by individuals with disabilities and special needs. The district works cooperatively with LWSRA to facilitate successful participation for individuals who request an inclusion aide. Inclusion services give participants the needed support in a typical park district setting.

LEARN MORE AT WWW.LWSRA.ORG



(815) 320-3500
support@lwsra.org



1900 Heather Glen Drive
New Lenox, IL 60451



THE SANCTUARY GOLF COURSE



485 N. Marley Road, New Lenox, IL 60451

Call (815) 462-GOLF (4653)

Fax (815) 462-4659



Golf Lessons at the Sanctuary

Bob Schulz, PGA, Director of Golf

Ethan Bedsaul, PGA, Assistant Golf Professional

Ben McAdams, PGA Assistant Golf Professional

Bill McNerny, PGA, Assistant Golf Professional

Private Golf Lessons

Available by appointment only.

Call (815) 462-GOLF (4653)

Lesson Rates (fee includes range balls)

½ Hour Lesson	\$65
4-Lesson Series.....	\$200
Junior/Senior ½ Hour Lesson	\$55
4-Lesson JR/SR Series	\$175

2022 New Lenox Residents Rates

Monday-Friday	9 Holes w/Cart	18 Holes w/Cart
Adult:	\$22/\$39	\$30/\$45
Senior/Junior:	\$22/\$39	\$22/\$39
Twilight (after 2pm):	\$22/\$39	\$22/\$39

Saturday & Sunday	9 Holes w/Cart	18 Holes w/Cart
Adult/Senior/Junior:	\$30/\$45 (after 10am)	\$40/\$55
Twilight (after 2pm):	\$30/\$45	\$30/\$45

Driving Range

\$4 – Warm Up Bucket (20 practice balls)

\$6 – Medium Bucket (35 practice balls)

\$10 – Large Bucket (65 practice balls)

Senior Special

Monday-Friday

\$39 with cart (60 & Older)

Be sure to check out our website golfsanctuary.com for upcoming events and to book your tee times!

Metamucil 55+ Golf Outing

Sanctuary Golf Course

October 11, 2022

9:00am Shotgun Start

Register in person at the
New Lenox Community Park District

or scan the
code to register
online.





SPENCER TRAILBLAZERS

Grade K (2022-2023 School Year)

Spencer Trailblazers is an extended childcare program held in the blue neighborhood at Spencer Trail for AM and PM Kindergarten students. Our staff strives to foster growth academically, socially, and emotionally. Children will enjoy structured activities, games, and outdoor play, as well as a variety of arts and crafts. Children must bring their lunch and a drink with them each day. We will provide a snack and drink each day. Parents must commit to a set schedule for the entire school year. This program is only available for 3, 4 or 5 days of extended childcare.

There is limited availability in the Trailblazers program.

- A one-time nonrefundable registration fee of \$35, commitment form and financial agreement is required at the time of registration.
- The Automatic Payment Plan is required for this program, No Exceptions. You will be subjected to a \$25 service charge if your card is declined.
- You will not be allowed to change your committed days once you register.

Our Spencer ACES program is available if your child needs care before or after kindergarten or Trailblazers (before 8:25am and/or after 3:00pm). You are not required to pay another registration fee of \$35. Please note: You do have to register for the ACES program separately.

ePACT for Trailblazers

All families are required to utilize ePact, No Exceptions. ePact information must be completed prior to the first day participant attends the program. ePACT is a secure emergency network, that we will use to collect medical and emergency contact information electronically. Not only will ePACT replace paper forms, but it will also ensure we have a way to communicate with you.

NUMBER OF DAYS	5	4	3
Morning Trailblazers (PM K Students) 8:25am-12:20pm	\$96	\$80	\$63
Afternoon Trailblazers (AM K Students) 10:55am-3:00pm	\$96	\$80	\$63



BEYOND THE BELL

Ages 5-12

LCC (Room 1) Entry C

School's off! Join us for an action-packed, fun-filled day. We will provide age-appropriate activities including organized games, arts and crafts, field trips and much more. We have divided the day to offer additional options for working parents who may not need the full 12-hour care.

- Before Care will be from 6:30am to 9:00am and light breakfast will be provided.
- Beyond the Bell will be from 9:00am to 3:30pm where they will need to bring a lunch with their name on it.
- After Care will be from 3:30pm to 6:30pm where a snack and drink will be provided.

A \$25 late fee per child will be added after the registration deadline. Late registration will be taken until the previous Thursday at Noon. Absolutely No Registration Will Be Taken After Deadline, No Exceptions. No drop-off registration allowed! For more information, call the Park District at (815) 485-3584.

Holiday: No School

Day	Date	Registration Deadline
TU	11/8	TU, 11/1 by 10:00am

Turkey Trot Week

Day	Date	Registration Deadline
M-W	11/21-11/23	TU, 11/15 by 10:00am

Winter Wonderland

Day	Date	Registration Deadline
TU-TH	12/27- 12/29	TU, 12/20 by 10:00am
TU-F	1/3- 1/6	TU, 12/27 by 10:00am

Beyond the Bell	Times	4 days	3 days	2 days	1 day
1st Child	9:00am-3:30pm	\$127	\$102	\$72	\$53
2nd Child	9:00am-3:30pm	\$120	\$97	\$68	\$50
Add'l Out of District Fee	9:00am-3:30pm	\$10	\$8	\$6	\$4
Before Care	Times	4 days	3 days	2 days	1 day
1st Child	6:30-9:00am	\$54	\$44	\$32	\$18
2nd Child	6:30-9:00am	\$50	\$41	\$30	\$17
Add'l Out of District Fee	6:30-9:00am	\$8	\$6	\$4	\$2
After Care	Times	4 days	3 days	2 days	1 day
1st Child	3:30-6:30pm	\$66	\$53	\$37	\$21
2nd Child	3:30-6:30pm	\$61	\$49	\$34	20
Add'l Out of District Fee	3:30-6:30pm	\$8	\$6	\$4	\$2



ACES/BEYOND SCHOOL PROGRAM

Grades K-6 (2022-2023 School Year)

The ACES program is designed to provide a safe, structured before-and-after school program for children attending District 122 schools in grades Kindergarten through sixth. The program hours are 6:30am until school begins and after school until 6:30pm. Each participant is required to pay a one-time nonrefundable registration fee of \$35.

Registration began on Monday, June 27.



Online registration will be available after your one-time nonrefundable \$35 registration fee has been paid. Weekly payment is due by 10:00am on Tuesday of the previous week.

- Late registration will be taken until the previous Thursday at Noon. \$25 late fee per child will be charged. Absolutely No Registration will be taken after the deadline, No Exceptions.
- Absolutely No drop-off registration will be taken.
- We do not credit accounts for days absent or transfer days from week to week.

Payment can be made online, emailed to geninfo@newlenoxparks.org or dropped off at the drop box located outside of the NLCPD Administration Building, 701 W. Haven Avenue.

We offer an Automatic Payment Plan option for those individuals who are attending ACES on a set schedule.

Please view the Commitment Form and the Financial Agreement Form on our website. Note that in order to be enrolled in the Automatic Payment Plan, you must complete and submit these forms to the Park District Office one week prior to starting the program. You will be subjected to a \$25 service charge if your card is declined.

ePACT For ACES

All families are required to utilize ePact, No Exceptions. ePact information must be completed prior to the first day participant attends the program.

ePACT is a secure emergency network, that we will use to collect medical and emergency contact information electronically. Not only will ePACT replace paper forms, but it will also ensure we have a way to communicate with you.



Price List	5 DAYS	4 DAYS	3 DAYS	2 DAYS	1 DAY	PROGRAM LOCATIONS
BEFORE SCHOOL	\$65	\$54	\$44	\$32	\$18	Spencer ACES Spencer Crossing School Cafeteria Nelson ACES Nelson Prairie School Cafeteria Tyler/Bentley ACES Tyler School Gymnasium Haines/Oakview ACES Haines School Cafeteria
2nd child	\$60	\$50	\$41	\$30	\$17	
AFTER SCHOOL	\$81	\$66	\$53	\$37	\$21	
2nd child	\$75	\$61	\$49	\$34	\$20	
½ Day Early Dismissal Upcharge					\$20	



GGLeagues:
ESPORTS Fall Season
Adult



GGLeagues is an ESPORTS, video game platform that provides fun and safe competitions and educational opportunities for parents and gamers of all ages. Compete and enjoy your favorite games including, Madden, Rocket League, Fortnite, Super Smash Bros and Mario Kart 8 Deluxe. Gamers will participate in leagues and tournaments throughout the state. To participate, players must have their own gaming console, the respective video game and online capabilities. Purchasing a season pass will unlock all the games offered in the Fall season.
[Click Here](#) to register for the GG Leagues Fall Season.
Registration deadline is Wednesday, September 28.

Adult Division
Ages 18 & Older

Date	Time	R/NR
10/3-11/14	9:00-10:00pm	\$40 per person*

*Fee covers entry into all programs within the Fall Season



Flag Football Turkey Tournament
Adult
Fieldstone Park

Prior to sitting down in front of the television for Thanksgiving football, get some practice in for yourself in this one-day, double-elimination Flag Football Tournament. We will play two 20-minute halves with a running clock; all players are eligible receivers. This is an 8-on-8 tournament, and each roster can have a maximum of 20 players. Limited spots are available so don't wait to register a team. Prizes will be awarded to the top two teams of the tournament. Check in begins at 8:00am. In the chance of the tournament being cancelled due to weather conditions, games will be rescheduled to Saturday, November 12.
Registration deadline is Wednesday, October 19.

Activity	Day	Date	Time	R/NR
24230-A1	SA	11/5	8:30am	\$260 per team

Frankfort New Lenox Running Club
Adult



The Frankfort New Lenox Running Club is an easy going, all volunteer club, focused on running. There is no fee or pace requirements. Everyone is welcome; just show up and run! We do not host sanctioned or timed events. We host weekly group runs, which are posted on our Facebook page. To join, visit their [Frankfort New Lenox Running Club Facebook page](#). Please refer to the events tab on their Facebook page for potential changes to either the run location or cancellations due to weather.
Note: All members must complete the waiver on the Facebook page before being added to the group.

Daddy / Daughter
Date Night

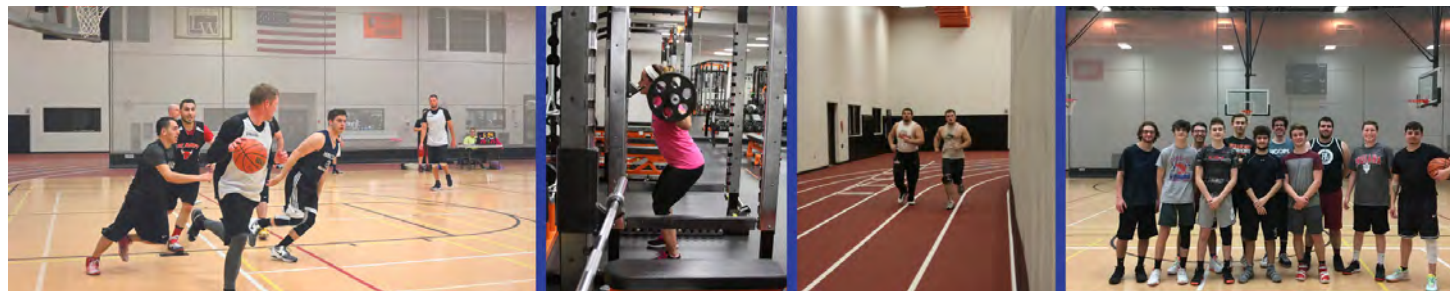
Friday, November 4, 6:00-8:00pm
Registration deadline is
Friday, October 21



Adult Drop-in Programs

Lincoln-Way West and Lincoln-Way Central High School Field House

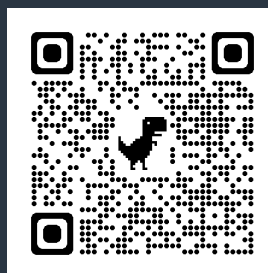
Get off the couch and come play! Patrons must follow drop-in procedures and show a valid picture ID. Drop-in participants must pay at the front desk when arriving to the Field House. Cash only. Sign up for a season pass for a discounted rate!



ACTV#	LOCATION	DAY/TIME	DATES	FEES
Pickleball ACTV#26298-A1	LW Central Field House	Mon., 7:00-9:00pm	9/12-12/12	\$60/LWR Season Pass \$65/NR Season Pass \$10/LWR • \$15/NR per night
Women's Open Fun Basketball ACTV#27291-A1	LW Central Field House	Mon., 7:00-9:00pm	9/12-10/24	\$30/LWR Season Pass \$35/NR Season Pass \$10/LWR • \$15/NR per night
Women's Open Fun Volleyball ACTV#27296-A1	LW Central Field House	Mon., 7:00-9:00pm	9/12-12/12	\$60/LWR Season Pass \$65/NR Season Pass \$10/LWR • \$15/NR per night
Volleyball ACTV#27295-A1	LW Central Field House	Wed., 7:00-9:00pm	9/7-12/14	\$60/LWR Season Pass \$65/NR Season Pass \$10/LWR • \$15/NR per night
Open Gym (Badminton, Volleyball, Basketball) ACTV#27299-A1	LW Central Field House	Thurs., 6:00-9:00pm	9/8-10/27	\$10/LWR • \$15/NR per night
Men's 35 & Older Basketball ACTV#27293-A1	LW West Field House	Mon. & Wed., 7:00-9:00pm	9/7-12/14	\$110/LWR Season Pass \$115/NR Season Pass \$10/LWR • \$15/NR per night
Open Basketball ACTV#27299-A1	LW West Field House	Thurs., 6:00-9:00pm	9/8-10/27	\$10/LWR • \$15/NR per night

Skip Day Information

- Scan the code for the Lincoln-Way Field House and Fitness Center monthly schedules.
- The Field House may end earlier due to lack of attendance. Patrons are encouraged to arrive at the program's start time.
- Due to circumstances beyond our control, additional skip days may be added. These dates will be posted as we are notified



LINCOLN-WAY FITNESS CENTER & TRACK INFO



INDOOR WALKING TRACK INFORMATION

Utilizing the Walking Track is **FREE** for Lincoln-Way Residents.
Non-Residents must pay a rate of \$5 per visit.

Field House Entrance

September 7-December 16

Lincoln-Way West Walking Hours

Mon., Wed.-Fri., 6:00-9:00pm

Sat., 1:00-4:00pm

Sun., Noon-4:00pm

Lincoln-Way Central Walking Hours

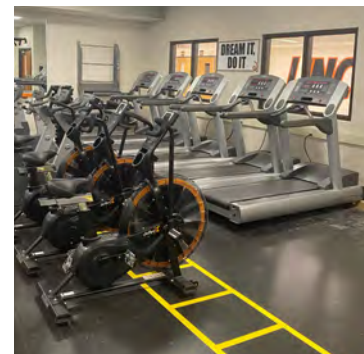
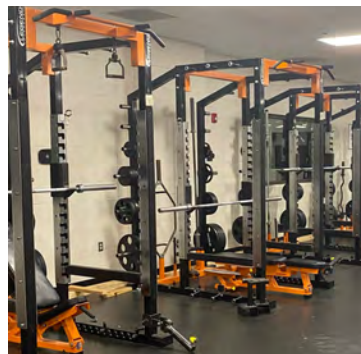
Mon., Wed. & Thurs., 6:00-9:00pm

Track Information

Age 18 & Older

Must have photo ID

- A temporary walking pass will be provided at the Park District check-in desk at the Field House
- Approximately 8-9 laps in lanes 5 or 6 equal one mile
- Be alert for others around you
- Slower moving users shall stay on the inner side of the track and faster moving users shall stay to the outside. Only two side-by-side users allowed during programs. Users may not be three abreast across the track.
- Inappropriate behavior will not be tolerated. Such behavior will result in the revocation of participant's pass. All revocations are subject to the Director of Recreation's review/interpretation.
- Only gym shoes will be allowed in the Field House
- No food or beverages other than water are allowed in the Field House



LINCOLN-WAY WEST FITNESS CENTER:

September 7-December 16

Age 14 & Older

The Lincoln Way West Fitness Center has been renovated and now only includes free weights and cardio machines. Patrons must provide a valid picture ID upon entering the Fitness Center.

Day	Time
M, W-F	6:00-9:00pm
SA	1:00-4:00pm
SU	Noon-4:00pm

- Drop-In participants under the age of 18 must have a signed Parent Permission Slip which can be found on our website under the Drop-In Programs tab
- Registration is only taken at the Park District office or at the fitness center during the Park District's scheduled hours. You are NOT able to register through Lincoln-Way.

Fees & Membership

Ages 14-22 (LW Resident Student with ID)

Activity LWR

27512-A1 \$45

Age 18-54

Activity LWR/NR

27512-A2 \$75/ \$80

Ages 55 & Older

Activity LWR/NR

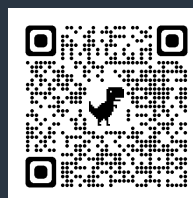
27512-A3 \$20/\$25

Daily Drop-In Rate

LWR/NR \$10/\$15

Skip Day Information

- Scan the code for the Lincoln-Way Field House and Fitness Center monthly schedules.
- The Field House may end earlier due to lack of attendance. Patrons are encouraged to arrive at the program's start time.
- Due to circumstances beyond our control, additional skip days may be added. These dates will be posted as we are notified





FITNESS Age 12 & Older

Studies show that exercise helps you feel better, sleep better and have more energy. Join one of the New Lenox Community Park District's many fitness programs to achieve your fitness goals. Participants under the age of 16 are required to be registered along with a parent.

Hatha Yoga

LCC (Room 2) Entry C

Instructed By: Heather Letts

Hatha Yoga is used to create balance in the body and the mind. This is accomplished by looking to the eight limbs of yoga including asana (physical movement) and pranayama (breathing exercises). During the course we will discover how the linking of physical movement and breath work can begin to slow the mind and release stress. This class is great for people who are looking to decompress from their day or need low impact exercises that will still build strength. All levels of experience and flexibility are welcome! For your comfort, please come to class on an empty stomach (eat two hours before class) and wear loose fitting clothing. Bring your own yoga mat and strap to class.

Activity	Day	Date	Time	R/NR	Skip Date
27519-A1	TH	9/8-10/20	7:30-8:30pm	\$66/\$71	
27519-A2	TH	10/27-12/1	7:30-8:30pm	\$50/\$55	11/24



The Fitness Court: Basics

Fitness Court

Instructed by: Carissa Pavlik

This Basics class will go through the 7 zones of the Fitness Court. These zones include Core, Squat, Push, Lunge, Pull, Agility and Bend. In each zone, participants will go through a series of workouts from easy, intermediate, and hard. Participants will work out at each zone for 45 seconds and then during a 15 second break, they transition to the next zone. No matter your fitness level, the Fitness Court is designed to support every workout type, goal, and program imaginable.

Activity	Day	Date	Time	R/NR
27187-A1	TU	9/13-10/18	10:00-10:35am	\$32/\$37



AMPD Kickboxing

Lincoln-Way West High School Dance Studio

Instructed by: Carissa Pavlik



AMPD Kickboxing combines various kickboxing, boxing, and mixed martial arts movements with great music to create a fun, full-body workout that anyone can do! We use the rhythm, speed, and phrasing of the music to execute punching, kicking, blocking and combination sequences in a safe and effective manner. Bring a towel to class.

Activity	Day	Date	Time	R/NR
27197-A1	M	11/14-12/12	6:00-7:00pm	\$50/\$55

Fit4Baby

Lincoln-Way West High School Dance Studio

Instructed By: Fit4Mom Certified Instructors



FIT4BABY is a workout program designed specifically for moms-to-be. It includes cardio, strength training, balance, flexibility and core exercises to accommodate all trimesters of pregnancy. This 6-week program includes prenatal workouts once a week, weekly emails with tips and recipes, and a prenatal journal "the bump book" to document this special time. FIT4BABY will build your endurance, strengthen your body and prepare you for pregnancy, birth and beyond.

To learn more and to register for class, please visit lemont.fit4mom.com or email lemont@fit4mom.com.

Day	Time
TH	6:30-7:30pm

ADULT PROGRAMS



Horseback Riding

Adult



Get up and go! It's time to ride at Nova Quarter Horses! Fun for all ages at any riding level, no previous experience is needed. Come out to learn both Western and English disciplines taught by our highly qualified trainers and instructors. We offer both an indoor and outdoor arena, so Nova is able to offer lessons year-round. A 5-lesson card includes 5 individual one hour group lessons. Once your lesson card is purchased, call Nova to schedule your lessons at (708) 479-3696. There is a limit of one 5-lesson card per family. Jeans and boots or hard soled shoes are required. Helmets are available at participant's request.

Activity **R/NR**
27256-A2 \$225/\$230

Location:
Nova Quarter Horses, Inc.
10129 W. 187th Street, Mokena

Active Adult Exercise

Age 55 & Older



Get in shape and have fun during this fitness class designed for active adults! Stretching and cardiovascular exercises are included. All fitness levels are welcomed. Newcomers, please exercise at your own pace. This is not an instructor-led class; class follows along to an audio CD called "Fun and Fitness Over 50."

Activity	Day	Date	Time	Skip Date
29190-A1	M/W/F	9/2-12/21	10:00-11:00am	9/5, 10/10 11/11, 11/25

Location:
Senior Housing Community Room
1090 South Cedar Road, New Lenox

Jam Session & Social Time

Adult

LCC (Room 1) Entry C



Gather for an afternoon of music! Can't play an instrument? Join us to listen, sing along and meet new friends. If you do play, tune up your instrument and come join this group of musicians that meet the first Thursday of each month. All types of music are played from the American Song Book, the Swing Era, Dean Martin and Frank Sinatra. Bring your sheet music to share.

Day	Dates	Time
TU	9/6, 10/4, 11/1, 12/6	2:30-4:30pm

Quilting Club

Adult

Attention all quilting enthusiasts, join us on select Wednesdays and Fridays! On Wednesdays, we take turns sharing and showing our work. Fridays are set aside to work on your unfinished quilts. We occasionally go on quilting road trips and donate quilts to charities. All talent levels are welcome. This club meets the first Wednesday and the third Friday of each month. Don't forget your machine! Our group continues to grow and is always looking for new members.

Activity	Day	Date	Time	R/NR
29241-A1	W	9/7, 10/5 11/2, 12/7	10:00am-3:30pm	\$20R/Yr
	F	9/16, 10/21 11/18, 12/16	11:00am-3:30pm	

Location:
Senior Housing Community Room
1090 South Cedar Road, New Lenox

Digital Photography 101

Adult

LCC (Bi-Centennial Room) Entry E
Instructed by: Silver Castle Studio



Learn how to create beautiful images using your Digital SLR camera! In this easy-to-understand course, you will learn the basics of photography and how to use the many functions of your camera. This introductory class is for anyone wanting to learn photography as well as for those wanting to take their photography to a new level. Kelli Adams is an award-winning Master Photographer with over 30 years in the photography industry and has been teaching photography for almost 10 years. Participants must bring their own cameras.

Activity	Day	Dates	Time	R/NR
27250-A1	TU	9/13, 9/20, 9/27	6:00-8:00pm	\$100/\$105





Coloring Club

Adult

Administration Building (All-Purpose Room)



Coloring isn't just for kids anymore! You will rediscover the simple relaxation and joy of coloring. This is a great activity to explore your artistic side. You will find delight in creating a beautiful work of art with no artistic skills required. Coloring is known to reduce stress and improve hand-eye coordination. This club will meet select Wednesdays and all materials are included. Please register at least one week prior to the beginning of the session or the class may be cancelled.

Activity	Day	Date	Time
29592-A1	W	9/14, 9/28, 10/12, 10/26, 11/9, 11/23	1:00-2:30pm



Tai Chi

Ages 50 & older

This class is offered by Will County Senior Services. The goal of this class is to improve balance to prevent falls, increase flexibility and reduce stress. It's slow, soothing movements incorporate deep breathing and relaxing postures that help calm the mind and body each time you go through gentle movements. For any questions, please call (815) 723-9713.

Intermediate Level

Day	Date	Time	Skip Dates
TU	11/1-1/3	1:30-2:30pm	12/20, 12/27

Beginner Level

Day	Date	Time	Skip Dates
TU	11/1-1/13	2:30-3:30pm	12/20, 12/27

Fee:

\$48 or \$24 with a Will County Senior Services Membership. Membership (including newsletter) is \$30 per single or \$40 per couple. Payable on site or mail to Will County Senior Services, 251 N. Center Street, Joliet, IL 60435.

Location:

Senior Housing Community Room
1090 S. Cedar Road, New Lenox

Can You Afford to Retire

Adult

LCC (Room 2), Entry C

Presented by: Bentron Financial



This program will help attendees evaluate their readiness for retirement with several self-evaluation exercises. Once the evaluations are complete attendees will be introduced to the Ten Critical Questions. These are the questions that every retiree must answer before embarking on a successful retirement. Students will be given in depth instruction on the nuances of Social Security:

- How benefits are calculated
- When to file to maximize benefits
- Taxation of benefits
- Benefits while working
- Benefits for spouses, divorced and widows

Attendees will then discuss the basic need for an estate and or financial plan. The instructor will help attendees conduct an estate analysis complete with a net worth statement.

Activity	Day	Date	Time
27602-A1	W	10/5	6:30-7:30pm

BUS TRIPS



TAKE A TRIP with the New Lenox Community Park District!

We have a variety of travel destinations to choose from, so sit back, relax and let us take care of the driving. Call your family, friends and neighbors and join the fun! Please note that there is no additional fee for nonresidents charged for our bus trips. For further details for the trips listed here or to suggest a future travel destination, please contact the Recreation Department at (815) 485-3584, we'd love to hear from you!

How much walking to expect:

Minimal =  Some = 
Mostly = 

Fall Jewelry, Fashion & Accessories Show

Adult
Rosemont, IL



Join us for this unique shopping experience at one of the nation's largest jewelry, fashion and accessories show. This show will feature many new and unique gift items to provide an early start on your holiday shopping. Space is limited so please register early. Fee includes admission and transportation. Lunch is on your own.

Registration deadline is Friday, September 16.

Activity	Day	Date	Time	R/NR
29542-A1	F	10/21	9:30am (LCC Door C) 5:30pm (Return Approximately)	\$40

Haunted History Tour

Adult
Chicago. IL



Join us and experience Chicago's many ghosts, haunted history, and all-around strangeness! We don't just drive past Chicago's spooky places, we let you experience them first-hand! You will enjoy three hours of weird Chicago history and hauntings at some of the city's Spookiest locations! Often imitated, but never equaled. It's a tour of the Windy City that you won't soon forget! Fee includes transportation, tour guide, gratuity & snacks

Registration Deadline is Friday, September 23

Activity	Day	Date	Time	R/NR
21530-A1	F	10/7	4:30pm (LCC Door C) 10:45pm (Return Approximately)	\$79

The Sound of Music & Lunch at Paramount Theaters

Adult
Aurora, IL



Nominated for 9 Tony Awards, and winner of the best musical! When carefree nun-in-training Maria is sent by her convent to be the governess of seven children, she finds herself unexpectedly questioning her choices in life and falling in love with the children's stern father, all the while the events of World War II play out in the background. One of the most beloved musicals of all time and a holiday favorite, The Sound of Music has enchanted audiences for more than 50 years. Experience it for the first time or all over again at Paramount Theatre, where our lobby will be decked out in Christmas decorations, including a two-story Christmas tree. Enjoy lunch catered by Enticing Cuisine in the beautiful ballroom and then walk right across the street to enjoy the show. Lunch menus always include salad, rolls, hot entrée, vegetable, potatoes or rice with most entrées, dessert and non-alcoholic beverages. Fee includes lunch, performance and transportation.

Registration deadline is Monday, October 3.

Activity	Day	Date	Time	R/NR
21527-A1	W	11/16	9:30am (LCC Door C) 5:30pm (Return Approximately)	\$89



To ensure the success of our trips, some are scheduled in cooperation with Frankfort Park District.

Sorry..... there are no refunds on bus trips



Jacob Henry Mansion Presents - The Four C Notes: Seasons Greetings

Adult
Joliet, IL



Ring in the holidays with The Four C Notes and their Rockin' Holiday Show at the Jacob Henry Mansion (1873), a Historical National Landmark. Enjoy a delicious lunch and listen to the hits of Frankie Valli and the Four Seasons, Belmont's, Drifters and The Beach Boys plus Rock and Roll Holiday Classics! The Four C Notes was created by John Michael Coppola, best known for his appearance in Chicago's long running production of the Broadway smash hit Jersey Boys. Fee includes lunch, performance and transportation.

Registration deadline is Friday, November 4.

Activity	Day	Date	Time	R/NR
21534-A1	W	12/7	10:00am (LCC Door C) 5:30pm (Return Approximately)	\$74

Geneva Christmas Walk

Adult
Geneva, WI



Nestled along the Fox River, Geneva welcomes the holiday season with the arrival of Santa Lucia and St. Nicholas. Visitors enjoy the opportunity to stroll and shop through the historic downtown area, enjoy chestnuts roasting on an open fire and join carolers as they sing songs of the season. The courthouse lawn becomes illuminated with lights and features the "Great Tree". Among the twinkling lights and fresh greenery lined streets you will find downtown Geneva to be a holiday destination overflowing with comfort and charm. This is one holiday experience you won't want to miss! Dinner is on your own. Fee includes transportation only

Registration Deadline is Thursday, November 10.

Activity	Day	Date	Time	R/NR
21505-A1	F	12/2	2:15pm (LCC Door C) 9:45pm (Return Approximately)	\$45

Chorus Line at Drury Lane

Adult
Oakbrook, IL



This impassioned backstage look at the intimate lives of dancers auditioning for a Broadway chorus brilliantly combines stunning song and dance with a compelling, moving story. Beloved around the world, A Chorus Line is the ultimate love letter to Broadway and features memorable numbers including "What I Did for Love," "One," and "I Hope I Get It." The iconic musical won the Pulitzer Prize for Drama in addition to nine Tony Awards, including Best Musical and Best Score, and four Drama Desk Awards. Before the show, we will enjoy a delicious lunch. Meal choices are Rotolo di Pasta or Roasted Turkey. Please make your selection at the time of registration. Fee includes transportation, lunch, & show.

Registration Deadline is Wednesday, January 4.

Activity	Day	Date	Time	R/NR
21510-A1	W	2/1	10:15am (LCC Door C) 4:45pm (Return Approximately)	\$139

Savannah, Jekyll Island, & Beaufort

Adult
Georgia



Get a taste of old-world Southern charm on our bus tour to Savannah, Jekyll Island, and Beaufort! More than just a Savannah bus trip, this vacation package combines a full experience in Savannah with the beauty of these fascinating southern treasures. On your Savannah bus tour, you will see the breathtaking Victorian homes that make Savannah famous and enjoy a tour of the historic district. Then, on another day, island-hop to Jekyll and St. Simons islands. Jekyll Island is home to the "Millionaires Club," where America's most famous wealthy elite lived and played. St. Simons has the ultimate in Southern character, a vision of beauty in moss draped oaks and charming boutiques in a historic setting. Enjoy a show at the historic Savannah Theatre and then finally, we will visit the historic city of Beaufort and see Parris Island marine base. Trip insurance prices vary depending on occupancy (\$72 triple, \$72 double and \$96 single per person) Please write a separate check payable to "Travel Insured International, Inc." or pay it online at www.travelconfident.com. This trip departs at 8:30am from the Lions Community Center on Sunday, April 16 and will return the evening of Saturday, April 22. Limited space available; don't wait to register!

Final payment and registration deadline is Thursday, February 9.

Activity	Day	Date	R/NR
21524-A1	SU-SA	4/16-4/22	\$1099 per person single
21524-A2	SU-SA	4/16-4/22	\$850 per person double
21524-A3	SU-SA	4/16-4/22	\$830 per person triple
*\$75 deposit due upon registration			



Kindermusik

Ages Birth-5



Imagine a place where you can reconnect with your child and make new friends. A place where you can rock gently to a lullaby, dance to a jazzy beat, explore new instruments, and sing songs from different cultures and traditions. And each one of these creative musical activities stimulate your young child's growing brain and help your child thrive. You won't want to miss out on this perfect way to capture the fleeting moments of childhood wonder.

Level 1

Ages Birth-2 (Non-Walkers) With Caregiver

An early start is the best start! Whether you have a newborn or a walker, nurture your heart-to-heart bond with your child and delight in how your child responds to music as you play instruments, sing, make new friends, cuddle and dance together.

Activity	Day	Date	Time	R/NR
20311-A1	TH	10/6-10/27	10:10-10:55am	\$84/\$89
20311-A2	S	10/8-10/29	9:00-9:45am	\$84/\$89

Level 2

Ages 2-3 With Caregiver

Fall in love with all the ways you can foster your toddler's love of music while also rediscovering the joys of childhood through their eyes as you play, giggle, dance, pretend, sing and explore instruments together.

Activity	Day	Date	Time	R/NR
20312-A1	W	10/5-10/26	10:00-10:45am	\$84/\$89
20312-A2	TH	10/6-10/27	9:15-10:00am	\$84/\$89
20312-A3	S	10/8-10/29	10:00-10:45am	\$84/\$89

Level 3

Ages Birth-4 With Caregiver

We know that planning outings with little ones can be tough. . .so why not bring the whole family? During our Kindermusik Mixed-Age class, you can leave the planning to our fabulous team of Kindermusik instructors so you can simply enjoy singing, dancing and, of course, learning with your family!

Activity	Day	Date	Time	R/NR
20574-A1	W	10/5-10/26	9:00-9:45am	\$84/\$89
20574-A2	TH	10/6-10/27	11:05-11:55am	\$84/\$89
20574-A3	TH	10/6-10/27	12:30-1:15pm	\$84/\$89

Location:

Simply Music and Creative Arts Studio
13919 E. Illinois Highway, New Lenox
(Across from Tyler-Bentley Elementary School)



Preschool Prep

Ages 2.5-4

LCC (Bi-Centennial Room) Entry E

This is a great preparation class for children who want to attend school but aren't quite ready. The alphabet, numbers, colors and shapes will be introduced. Also, a fun craft will be made each week. Session 2 is a continuation of Session 1. The instructor will not change diapers. Please bring your own nut-free snack each day.

Activity	Day	Date	Time	R/NR	Skip Date
20132-A1	TU	9/13-10/11	9:45-11:45am	\$95/\$100	
20132-A2	TU	10/18-11/29	9:45-11:45am	\$95/\$100	11/8, 11/22

Preschool Blast Off

Ages 2.5-4

LCC (Bi-Centennial Room) Entry E

This class is the last step before preschool. The alphabet, numbers, colors and shapes will be introduced. Children will participate in circle time, crafts and movement. Session 2 is a continuation of Session 1. The instructor will not change diapers. Please bring your own nut free snack each day.

Activity	Day	Date	Time	R/NR	Skip Dates
21705-A1	TH	9/15-10/13	9:45-11:45am	\$95/\$100	
21705-A2	TH	10/20-12/1	9:45-11:45am	\$105/\$110	11/24

Lil' Learners

Ages 2.5-4

LCC (Bi-Centennial Room) Entry E

This class will prepare your child for preschool by presenting the basic skills, emphasizing the social development of your child and the importance of learning through play. Group and individual activities will help your child develop new skills and make new friends. Session 2 is a continuation of Session 1. The instructor will not change diapers. Please bring your own nut-free snack each day.

Activity	Day	Date	Time	R/NR	Skip Dates
20192-A1	F	9/16-10/14	9:45-11:45am	\$95/\$100	
20192-A2	F	10/21-12/2	9:45-11:45am	\$105/\$110	11/25



CHILDREN'S PROGRAMS



Rising Star Musical Theater

Ages 6-11

LCC (Room 1) Entry C

Instructed by: All About Music & Children's Theatre

Explore your dramatic and creative side while learning theatrical terms, musical concepts, and basic dance steps. Students will learn acting warmups, improv games and how to make props. They will also prepare a short performance of a popular musical such as "Encanto", "Alice in Wonderland" or "Willy Wonka" to be given during the final class.

Activity	Day	Date	Time	R/NR
20151-A1	TU	9/13-10/25	6:45-7:45pm	\$129/\$134

Horseback Riding

Age 7 & Older

Get up and go! It's time to ride at Nova Quarter Horses! Fun for all ages at any riding level, no previous experience is needed. Come out to learn both Western and English disciplines taught by our highly qualified trainers and instructors. We offer both an indoor and outdoor arena, so Nova is able to offer lessons year-round. A 5-lesson card includes 5 individual one hour group lessons. Once your lesson card is purchased, call Nova to schedule your lessons at (708) 479-3696. There is a limit of one 5-lesson card per family. Jeans and boots or hard soled shoes are required. Helmets are available at parent's request.

Activity	R/NR
27256-A2	\$225/\$230

Location:

Nova Quarter Horses, Inc.
10129 W. 187th Street, Mokena

I Speak Spanish! – Spanish for Kids

Ages 3-6

Instructed by: Language in Action, Inc.

Expand your child's world! Introduce your child to the Spanish language in this Spanish immersion class developed especially for very young learners. Children will be immersed in the Spanish language through fun and educational activities and music. Each session covers new and exciting material!

Activity	Day	Date	Time	R/NR
24245-A1	TU	9/13-10/18	5:00-5:45pm	\$69/\$74
24245-A2	TU	10/25-12/6	5:00-5:45pm	\$69/\$74

Location:

Frankfort Park District, Founders Community Center
140 Oak Street, Frankfort, IL

Critter Class Parent & Me

Ages 3-12

LCC (Bi-Centennial Room) Entry E

Instructed by: Crosstown Exotics

Critter class is an introduction to some of the world's most misunderstood creatures. Reptiles, Amphibians, and bugs. We will teach the importance of these creatures to the environment as well as their natural history and how to take care of them as pets. Each class will feature live animals. No open toed shoes. Adult must attend with participants.

Activity	Day	Date	Time	R/NR
21120-A1	TH	9/15	6:00-7:00pm	\$33/\$38
21120-A2	TH	12/8	6:00-7:00pm	\$33/\$38

Magic Class

Ages 5-12

LCC (Bi-Centennial Room) Entry E

Instructed by: Magic Team of Gary Kantor

Children will have a wonderful time learning a collection of fascinating and mesmerizing tricks from the "Magic Team of Gary Kantor"! They will amaze family and friends with tricks that involve cards, ropes, coins, mind-reading and more. All materials are provided, and each child receives a magic kit to take home. Children are grouped by age and learn tricks that are age appropriate. Additionally, you can sign up for multiple classes since brand new tricks are taught at each session!

Activity	Day	Date	Time	R/NR
21260-A1	TH	10/13	5:00-5:55pm	\$26/\$31
21260-A2	TU	12/6	6:45-7:40pm	\$26/\$31

CHILDREN'S PROGRAMS



Chess Wizards

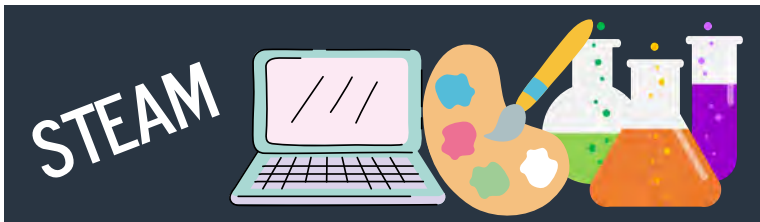
Ages 6-12

Administration Building (All-Purpose Room)



Enter the magical and exciting world of chess with Chess Wizards! You will participate in epic chess games, fun and interactive lessons, tournaments, team matches, trivia and more! Our specialized classes are a blast for everyone first through seventh. Whether you have been playing chess for your entire life and want to improve, are brand new to the game, or you just want to have a fun experience with your friends - Chess Wizards is the place for you!

Activity	Day	Date	Time	R/NR	Skip Dates
28156-A1	TH	8/25-10/13	4:00-5:00pm	\$136/\$141	
28156-A2	TH	10/20-12/15	4:00-5:00pm	\$117/\$122	11/3, 11/24



STEAM

Ages 5-11

LCC (Room 3) Entry D

Instructed by: Afterschool Enrichment Solutions



This exciting new program from Afterschool Enrichment Solutions brings together elements of science, art, and math in a hands-on, action-packed environment! Students will conduct experiments, play educational games, and unlock their creativity through building challenges and projects. No experience necessary!

Activity	Day	Date	Time	R/NR	Skip Dates
28157-A1	TU	10/4-11/29	5:30-6:30pm	\$128/\$133	11/22

Let's Code It – Digital Design

Ages 7-14

LCC (Room 3) Entry D

Instructed by: Afterschool Enrichment Solutions



In this exciting new coding class from Afterschool Enrichment Solutions, take a deep dive into computer programming with the web-based platform Tynker! Learn the art of digital animation Create video games that run on physics, math and art concepts Design Minecraft blocks, skin and mobs Experiment with HTML, Python and Java No previous coding experience is required to learn and have fun in the Tynker playground under the instruction of a coding coach!

****STUDENTS MUST BRING THEIR OWN DEVICES TO CLASS (tablet, laptop, Chromebook)**

Activity	Day	Date	Time	R/NR	Skip Dates
26220-A1	W	10/5-11/30	5:30-6:30pm	\$128/\$133	11/23

Community Backyard Bash



Friday, September 23

6:00-8:00pm

Haines Wayside Park

For more information

see page 37.



T-Ball Time

Ages 3-4

Spencer Trail School Gymnasium (Entry N)



T-Ball Time will feature parent/child introduction in T-Ball basics such as base running, field positions, batting and sportsmanship. This class will have a lot of repetitive drills to introduce the kids to the game. Adults must participate with children each week. Children must bring their own labeled mitt to class. Sign up your little slugger today!

Activity	Day	Date	Time	R/NR	Skip Date
20141-A1	W	9/7-9/28	5:00-6:00pm	\$54/\$59	
20141-A2	W	10/5-10/26	5:00-6:00pm	\$54/\$59	
20141-A3	W	11/2-11/30	5:00-6:00pm	\$54/\$59	11/23



Sports 101

Ages 5-8

Spencer Trail School Gymnasium (Entry N)

Does your child want to begin playing sports, but may need to learn the basics? If so, these introductory classes are what you are looking for! These classes will have a lot of repetitive drills to make sure each player can master the fundamentals before playing a game at the end of the session. Players will also improve on their hand-eye coordination and large motor skills. Participants attending the T-Ball 101 class must bring their own labeled mitt.

T-Ball 101

Activity	Day	Date	Time	R/NR
20331-A1	W	9/7-9/28	6:00-7:00pm	\$54/\$59

Flag Football 101

Activity	Day	Date	Time	R/NR	Skip Date
20331-A2	W	11/2-11/30	6:00-7:00pm	\$54/\$59	11/23

Archery Class

Ages 8-17



Whether you are brand new to archery or an experienced shooter, come out and enjoy four sessions of archery fun. You will learn safety, proper technique and form and shooting etiquette. There will be a lot of shooting in these sessions with shooting games and competitions mixed in. Staff at BowDoc Archery are USA Archery certified coaches. All levels of shooters are welcome from total beginners to experienced archers. BowDoc Archery will supply all of the equipment necessary for class.

Activity	Day	Date	Time	R/NR
22341-A1	TU	9/6-9/27	7:00-8:00pm	\$75/\$80
22341-A2	TU	11/1-11/22	7:00-8:00pm	\$75/\$80

Location:

BowDoc Archery
18815 Wolf Road, Unit 4, Mokena

Drop-In Open Gym

Ages 8 & Older

Lincoln-Way Central and Lincoln-Way West High School Field House

Get off the couch and come play at the Lincoln-Way West or Lincoln-Way Central Field House! At Lincoln-Way West you can enjoy a game of basketball and at Lincoln-Way Central you and a group of friends can enjoy a game of Pickleball, Badminton or Volleyball. Patrons from age 11 and younger must be accompanied by an adult and must submit a signed Parent Permission Slip. Patrons from ages 12-17 may be dropped off but must submit a signed Parent Permission Slip. Patrons 18 and older, must follow drop-in procedures and show a valid picture ID. Pay at the door. Cash only.

Activity	LWR/NR
27299-A1	\$10/\$15 per night

Skip Day Information

- Scan the code for the Lincoln-way Field House and Fitness Center monthly schedules.
- The Field House hours may end earlier due to lack of attendance.
- Due to circumstances beyond our control, additional skip days may be added. These dates will be posted as we are notified.





Game Day Sports!

Ages 7-12

Spencer Trail School Gymnasium (Entry N)



Every day is Game Day! Each class will start with warm up drills that will teach the fundamentals. The remaining time will consist of scrimmages and games. This class offers a great experience for players to improve on their current skills and to learn new ones. Then, they will have the opportunity to translate these skills into a game format. This class offers 60 minutes of nonstop fun!

Kickball Game Day!

Activity	Day	Date	Time	R/NR
20193-A1	W	9/7-9/28	7:00-8:00pm	\$54/\$59

Basketball Game Day!

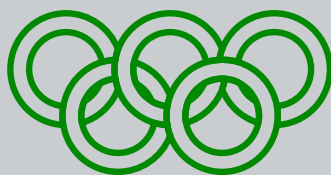
Activity	Day	Date	Time	R/NR
20193-A2	W	10/5-10/26	7:00-8:00pm	\$54/\$59

Floor Hockey Game Day!

Activity	Day	Date	Time	R/NR	Skip Date
20193-A3	W	11/2-11/30	7:00-8:00pm	\$54/\$59	11/23

DO YOU HAVE WHAT IT TAKES FOR THE...

Elf Olympics



Ages 10-13

Friday, December 2

6:00-8:30pm

LCC (Room 1) Entry C



For more information see page 36.

Challenge Tennis Academy



Ages 5-14

Lincoln-Way Central High School Tennis Courts

Challenge Tennis Academy has been providing instruction in the southwest suburbs for over 25 years. Programs are instructed by experienced staff who are knowledgeable and passionate about the sport. Classes will focus on hand-eye coordination, footwork, games, and fun! Lower compression tennis balls to allow for easier hitting and faster learning. These classes are perfect for beginners through advanced players. Participants must provide their own racquet. Participants in the Mini Tennis Class must bring a racquet 25 inches in length or shorter. A limited number of loaner racquets will be available at the first lesson.

Ages 5-7

Activity	Day	Date	Time	R/NR
24241-A1	SU	9/11-10/9	10:00-11:00am	\$65/\$70

Ages 8-10

Activity	Day	Date	Time	R/NR
24241-A2	SU	9/11-10/9	11:00-Noon	\$65/\$70

Ages 11-14

Activity	Day	Date	Time	R/NR
24241-A3	SU	9/11-10/9	Noon-1:00pm	\$65/\$70

Pre-Season Fall Basketball

Ages 6-13

This fall league will give your child the opportunity to improve his/her skills before moving to the Recreational Basketball League. This league is designed for the player that just wants to get out and play. Each week a basic skill will be taught and then games will be played. This is meant to be a learning opportunity mixed with game play.

Ages 6-9

Activity	Day	Date	Time	R/NR	Skip Date
28333-A1	M	9/12-10/24	6:30-7:30pm	\$60/\$65	10/3, 10/10

Location: Spencer Crossing School Gymnasium (Entry L)

Activity	Day	Date	Time	R/NR
28333-A2	W	10/5-10/26	6:00-7:00pm	\$54/\$59

Location: Spencer Trail School Gymnasium (Entry N)

Ages 10-13

Activity	Day	Date	Time	R/NR	Skip Date
28333-A3	M	9/12-10/24	7:30-8:30pm	\$60/\$65	10/3, 10/10

Location: Spencer Crossing School Gymnasium (Entry L)



Ultimate Beginner Volleyball Class

Ages 6-13

Spencer Crossing School Gymnasium (Entry L)



This program is open to all boys and girls who are beginners and those who want to review fundamental skills. Instruction will cover passing, setting, serving, spiking, team play and rules of the game. Skills will be broken down into simple steps and give players maximum ball contact. Games will be played every session, too!

Ages 6-7

Activity	Day	Date	Time	R/NR
22210-A1	W	9/14-10/19	6:30-7:30pm	\$79/\$84

Ages 8-9

Activity	Day	Date	Time	R/NR	Skip Dates
22210-A2	TU	9/13-11/1	6:30-7:30pm	\$79/\$84	9/20, 10/11

Ages 10-13

Activity	Day	Date	Time	R/NR
22210-A3	W	9/14-10/19	7:30-8:30pm	\$79/\$84



Ultimate Volleyball Game Play

Ages 10-13

Spencer Crossing School Gymnasium (Entry L)



This program is open to all boys and girls who are looking to improve their skills in a game-like setting. Practice your skills of passing, setting, serving, and spiking through game simulation drills. Play together as a team by learning in-game strategies by Ultimate Volleyball Coaches. Show off your fresh skills in this new Ultimate Volleyball Game Play Program.

Activity	Day	Date	Time	R/NR	Skip Dates
22210-A4	TU	9/13-11/1	7:30-8:30pm	\$79/\$84	9/20, 10/11

GGLeagues: ESPORTS Fall Season

Ages 8 & Older



GGLeagues is an ESPORTS, video game platform that provides fun and safe competitions and educational opportunities for parents and gamers of all ages. Compete and enjoy your favorite games including, Madden, Rocket League, Fortnite, Super Smash Bros and Mario Kart 8 Deluxe. Gamers will participate in leagues and tournaments throughout the state. To participate, players must have their own gaming console, the respective video game and online capabilities. Purchasing a season pass will unlock all the games offered in the Fall season.

[Click Here](#) to register for the GG Leagues Fall Season.

Registration deadline is Wednesday, September 28.

Youth Division

Ages 8-12

Date	Time	R/NR
10/3-11/14	7:00-8:00pm	\$40 per person*

Rookie Rugby

Ages 6-8

Lincoln-Way Central High School Field House



Rugby continues to grow in popularity and is expanding to include first, second and third graders. Rookie Rugby is a non-contact program that will introduce rugby skills through fun activities and games. This is a fun and fast-paced program taught by USA Rugby certified coaches from the South Suburban Rugby Club.

Activity	Day	Date	Time	R/NR	Skip Dates
22159-A1	TH	11/3-12/15	6:15-7:15pm	\$59/\$64	11/17, 11/24

Rugby 101

Ages 9-13

Lincoln-Way Central High School Field House



Rugby is one of the fastest growing youth sports in America. Rugby 101 is a non-contact program that will teach new and experienced players the fundamentals of the game while focusing on skills development and game simulations. This is a fun and fast-paced program taught by USA Rugby certified coaches from the South Suburban Rugby Club.

Activity	Day	Date	Time	R/NR	Skip Dates
27220-A1	TH	11/3-12/15	7:15-8:15pm	\$59/\$64	11/17, 11/24



KIDS FIRST SPORTS SAFETY INC.

Kids First Soccer Fundamentals

Ages 5-12

Spencer Trail School Gymnasium (Entry N)



See the Goal! This soccer program teaches fundamentals that all players need to understand when kicking the ball. This prepares kids how to play the game! Coaches will demonstrate ball handling, goalie positioning, first step directional movements, kicking, player positioning, and how to play the game with fundamentals. This program is ideal for beginners to advanced players that will enjoy learning through fun team competitive soccer drills. A championship game will conclude the program.

Activity	Day	Date	Time	R/NR	Skip Date
26674-A1	TH	9/8-10/6	5:00-6:15pm	\$105/\$110	9/29

Kids First Baseball Fundamentals

Ages 5-12

Spencer Trail School Gymnasium (Entry N)



This baseball program prepares and challenges all players through fun and competitive drills to develop skills that will maximize your player's potential. Players will experience drills in, batting, fielding, pitching, base running and throwing. Kids will be divided up into groups based on age and skill.

Activity	Day	Date	Time	R/NR
22111-A1	TH	10/13-11/3	5:00-6:15pm	\$105/\$110

Kids First Multi-Sport Class

Ages 5-12

Spencer Trail School Gymnasium (Entry N)



This class combines sports, games, events and contests while learning safe fundamentals. Coaches plan a variety of sports and games ranging from competitive to non-competitive and leisure. Activities may include basketball, baseball, softball, soccer, dodge ball, badminton, flag football, track and field events, kickball, frisbee and more. Classes are coordinated weekly, which create a new experience for all participants.

Activity	Day	Date	Time	R/NR
26677-A1	TH	10/13-11/3	6:15-7:30pm	\$105/\$110

Kids First Flag Football Fundamentals

Ages 5-12

Spencer Trail School Gymnasium (Entry N)



Are you ready for some football? Combining flag football fundamental preparation with flag football games. Coaches will teach football techniques with body balance and safety positioning, giving a player confidence to enjoy the game of football. The first two weeks are dedicated to understanding the game through team competitive drills of how to play various positions. Flag Football games will be played once the coach feels everyone is ready to play. A championship game will conclude the program.

Activity	Day	Date	Time	R/NR	Skip Date
26675-A1	TH	9/8-10/6	6:15-7:30pm	\$105/\$110	9/29

Kids First Indoor Track & Field

Ages 5-12

Lincoln-Way West High School Field House



Coaches will focus on teaching indoor sprints, hurdles, jumps, running and throws in a safe and fundamental way. The program consists of body balance techniques such as speed, quickness, and agility drills. A series of team relay races makes Indoor Track & Field fun and entertaining. The program concludes with an event Championship Series. Speed and quickness training will translate to other sports as well.

Activity	Day	Date	Time	R/NR	Skip Date
26678-A1	SU	9/11-10/2	1:00-2:15pm	\$105/\$110	
26678-A2	SU	10/16-11/13	1:00-2:15pm	\$105/\$110	11/6

Kids First Basketball Fundamentals

Ages 5-12

Lincoln-Way West High School Field House



Let's hoop it up! This basketball program focuses on fundamentals, basketball games and game preparation. Players will learn techniques on shooting, dribbling, passing, floor spacing, basketball safety awareness and sportsmanship. These basketball skills and safety techniques will make your player game ready!

Activity	Day	Date	Time	R/NR	Skip Date
22120-A1	SU	9/11-10/2	2:15-3:30pm	\$105/\$110	
22120-A2	SU	10/16-11/13	2:15-3:30pm	\$105/\$110	11/6



Children's Basketball League

Grades 1-8 (2022-2023 School Year)

Children will learn the basic skills of basketball along with offensive and defensive strategies within this recreational basketball league. Teamwork and good sportsmanship will be emphasized to promote quality enjoyment. Players of all levels are encouraged to participate in this high-energy league. Whether your child is new to the game or looking to improve their basketball skills, this program is the perfect way to have fun playing hoops!

Last day to register to receive a \$50 discount per player is Tuesday, September 13.

Last day to register is October 17.

Volunteer Information:

- There is volunteer fee of \$15 per household not per player.
- Each family will be required to volunteer for at least one hour during the season. When this has been completed, you will receive a \$15 credit to your Park District household account.
- When registering online, one Parent/Guardian must be enrolled in the Volunteer Fee. This fee must be in your cart prior to enrolling your child for the league.

League Information:

- Games are on Sundays, beginning Sunday, December 4, 2022 and ending Sunday, February 19, 2023 (Skip 12/25, 1/1 & 2/12).
- Early start times and Saturday games may be scheduled if needed for make-ups.
- Games are held at Lincoln-Way West High School
- Players will be contacted for their team assignment by Wednesday, November 2.
- Teams are scheduled to practice once a week starting the week of November 7.
- Practice days for each division are shown in the chart.
- Practice skip days may be rescheduled to an alternative day of the week based on availability but are not guaranteed.
- Player and practice requests will not be accepted

Coaching Information:

- There is a mandatory coaches' meeting on Thursday, October 27 at 7:00pm via Zoom.
- Coaches will be required to submit a state-mandated background check.
- Coaches may request practice availability and to be with one other coach.



Fee: \$204/LWR • \$224 Non-LW Resident (Fee includes jersey)

Activity	Division	Grades	Practice Days
28330-A1	Co-Ed Pee-Wee	1-2	M or TH
28330-A2	Boys' Youth	3-4	M or TH
28330-A3	Boys' Junior	5-6	M or TH
28330-A4	Boys' Teen	7-8	W or TH
28331-A2	Girls' Youth	3-4	TU or W
28331-A3	Girls' Junior	5-6	TU or W
28331-A4	Girls' Teen	7-8	W or TH
28332-A1	Volunteer Fee	\$15 R/NR	

Last day to register to receive a \$50 discount per player is Tuesday, Sept. 13





**Kiddie Kampus Registration Is Currently Open
Limited Space Remaining**

Ages 3-4 (as of 9/1/22)

Meet & Greet Days for Registrants

Thursday, September 8 and Friday, September 9

Classes begin the week of

September 12, 2022 and run through May 12, 2023.



What does Kiddie Kampus offer its participants?

The New Lenox Community Park District offers preschool classes designed to develop social, emotional, and physical skills to ensure school readiness. A child's separation from parents and involvement with a non-family member is one of many major steps towards his/her development. Kiddie Kampus provides a safe and supportive environment for your child's first school experience while increasing his/her self-esteem and confidence through age-appropriate instruction. Covered during the year are color, shape and number recognition, an introduction to number concepts and letter recognition. Your child's quest for learning will be nurtured through creative play, building friendships, working individually, and cooperating as part of a group. These activities promote patience, sharing and the awareness that there is a whole world of people surrounding and supporting them. Songs, stories, activities, and games are used for reinforcement and fun.

What requirements are necessary for Kiddie Kampus registration?

1. A copy of your child's birth certificate MUST be provided at registration. A child must be four (three for the 3-year-old program), on or before September 1, 2022 and must be able to handle bathroom hygiene independently (potty-trained, no diapers). It is very helpful if the child can zip/button independently.
2. A \$50 non-refundable registration fee, first month's tuition, along with a T-shirt fee of \$10 (if needed) will be collected while pre-registering your child. The remainder of the fees are then divided into eight equal monthly payments.
3. You must sign up for our automatic payment plan unless you pay in full. You must complete these forms and submit them at the time of registration.
4. Payments are deducted on the 15th of the month, beginning September 15. A late fee of \$25 will be assessed to any account that is delinquent.
5. If you pay your full tuition at time of registration, the \$50 non-refundable registration fee will be waived.
6. A voter's card or tax bill is required at registration for verification of residency.

Kiddie Kampus follows New Lenox School District 122's calendar year for all full days off except for our Winter Break. Kiddie Kampus is still in session when there is a half-day for New Lenox School District 122.

Due to priority registration of current 3-year-old Kiddie Kampus participants, there are limited spots available in the 4-year-old Kiddie Kampus program.	ACTV#	AGE	LOCATION	DAYS	TIME	R/NR FULL PAYMENT	R/NR MONTHLY TUITION
	64001-A1	4	Room 3	M/W/F	9:15am-11:30am	\$1,098/\$1,548	\$122/\$172
	64002-A1	4	Room 3	M/W/F	12:30pm-2:45pm	\$1,098/\$1,548	\$122/\$172
	64003-A1	4	Room 3	TU/TH	9:15am-11:30am	\$810/\$1,125	\$90/\$125
	64004-A1	4	Room 3	TU/TH	12:30pm-2:45pm	\$810/\$1,125	\$90/\$125
	64005-A1	4	Room 5	M/W/F	9:15am-11:30am	\$1,098/\$1,548	\$122/\$172
	64006-A1*	4½	Room 5	M/W/F	12:30pm-3:00pm	\$1,206/\$1,710	\$134/\$190
	63001-A1	3	Room 4	M/W/F	9:15am-11:15am	\$981/\$1,377	\$109/\$153
	63002-A1	3	Room 4	M/W/F	12:30pm-2:30pm	\$981/\$1,377	\$109/\$153
	63003-A1	3	Room 5	TU/TH	9:15am-11:15am	\$720/\$990	\$80/\$110
	63004-A1	3	Room 5	TU/TH	12:30pm-2:30pm	\$720/\$990	\$80/\$110
	63005-A1	3	Room 4	TU/TH	9:15am-11:15am	\$720/\$990	\$80/\$110
	63006-A1**	3-4	Room 4	TU/TH	11:30am-1:15pm	\$648/\$891	\$72/\$99

***Finally Five 2022/2023**

Age 4½ (Child must be turning five between 9/1/22-12/31/22)

LCC (Room 5) Entry C

This Kiddie Kampus class is designed to benefit our older preschool children who just missed the kindergarten cut-off. We have created a class geared towards the older learners. This class will meet Monday, Wednesday, and Friday for two and a half hours per day.

****Tues./Thurs. Extended Day 2022/2023**

Ages 3-4

LCC (Room 4) Entry C

This program provides a secure and caring environment that fosters growth in verbal development, small/large motor skills and social skills. This program is specifically created to serve the Tuesday/Thursday preschoolers to extend their day, so they receive as many academic hours as their three-day-a-week counterparts in a two-day school week.



Lunch Bucket Pals

Ages 3-4

LCC (Room 2) Entry C

Are you hungry for some friends and fun? When lunch is over, let the fun begin! This program allows for an extra hour of play time when tied into our Kiddie Kampus Program. We'll focus on gross motor skills and offer a variety of activities. All participants should bring lunch and drink with their name on it.

Age 3

Activity	Day	Date	Time	R/NR	Skip Date
20009-A1	M/W/F	9/12-10/21	11:15am-12:15pm	\$98/\$103	10/10
20009-A2	M/W/F	10/24-12/2	11:15am-12:15pm	\$88/\$93	11/21-11/25

Age 4

Activity	Day	Date	Time	R/NR	Skip Dates
20010-A1	M/W/F	9/12-10/21	11:30am-12:15pm	\$82/\$87	10/10
20010-A2	M/W/F	10/24-12/2	11:30am-12:15pm	\$74/\$79	11/21-11/25

Preschool Plus

Ages 3-4

LCC (Room 4) Entry C

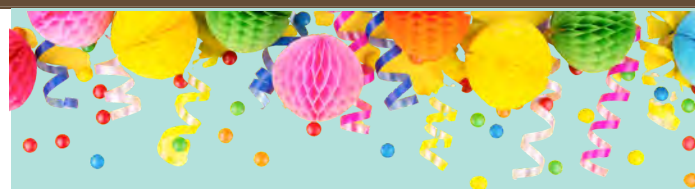
Is your child ready for a more advanced preschool program? Preschool Plus, taught by a certified Preschool educator, is designed as an enrichment to our preschool experience by adding an extra challenge for students who are ready to take the next step. Your child will benefit from a curriculum strong in accelerated projects and fine and gross motor skills development. All participants need to bring a bag lunch and drink with their name on it.

Age 3

Activity	Day	Date	Time	R/NR	Skip Dates
20017-A1	M/W/F	9/12-10/21	11:15am-12:15pm	\$98/\$103	10/10
20017-A2	M/W/F	10/24-12/2	11:15am-12:15pm	\$88/\$93	11/21-11/25

Age 4

Activity	Day	Date	Time	R/NR	Skip Dates
20018-A1	M/W/F	9/12-10/21	11:30am-12:15pm	\$82/\$87	10/10
20018-A2	M/W/F	10/24-12/2	11:30am-12:15pm	\$74/\$79	11/21-11/25



Let us host your Birthday

ATHLETIC AND POOL PARTIES OPTIONS

Lincoln-Way Central Field House Availability

Fridays: 6:00-9:00pm

Saturday: 1:00-4:00pm

Fee:

\$70/LWR • \$80/NR per hour of Gym space

\$35/LWR • \$40/NR per hour to utilize Lobby space

Lincoln-Way Central Pool Availability

Saturday

2:30-3:30pm

3:30-4:30pm

4:30-5:30pm

5:30-6:30pm

Sunday

11:00am-Noon

Noon-1:00pm

1:00-2:00pm

2:00-3:00pm

Fee:

\$333/LWR • \$338/NR per hour

(Fee includes lifeguards and LW rental fee)

\$39/LWR • \$44/NR per hour for balcony rental

**Please call the Administration Building at
(815) 485-3584 for more information.**



DANCE PROGRAM



Galaxy Dancers

Grades Pre-K-8th Grade
LCC (Room 2) Entry D

From the graceful movement of Ballet to the quick beat of Jazz to the synchronized sounds of Tapping Toes, the New Lenox Community Park Districts "Galaxy Dancers" has it all! This is a progressive program open to both girls and boys. Dance shoes will be available for purchase from the instructor on the first day of class. Students will be divided according to age in the following classes. Class size is limited; so please register early.

Irish Dance

Ages 4-12



We are excited to make your new beginner a champion! Our intro to Irish Dance program provides an energetic environment with inspiring instruction that helps children develop a love of Irish Dance and the self-confidence to perform in front of an audience! Our dancers will learn a variety of Irish Dance basics like foot placement, balance, posture, and step memorization while learning the traditional Irish Jig. They will learn a sense of timing and rhythm by practicing to traditional Irish music in class. But, most importantly, they make long lasting friendships that last a lifetime! Program attire consists of gym shoes or ballet shoes and gym shorts. Please bring a water bottle to class. Times subject to change based on enrollment.

Activity	Day	Date	Time	R/NR	Skip Date
27185-A1	M	9/12-10/24	4:00-4:30pm	\$90/\$95	10/10
27185-A2	M	11/7-12/19	4:00-4:30pm	\$90/\$95	11/28

Location:

Sullivan School of Irish Dance Studio,
13923 E. Illinois Highway, New Lenox
(Across from Tyler/Bentley Campus)

Monday, Sept. 12-Dec 12 ~ Skip (10/10, 10/31, 11/21, 12/5)

ACTV#	DANCE TITLE	GRADE	TIME	R/NR
28001-A1	Pre-Ballet	Ages 4-K	4:10-4:40pm	\$124/\$129
28002-A1	Beginner Ballet	K-1st	4:45-5:15pm	\$124/\$129
28003-A1	Beginner Tap	K-1st	5:15-5:45pm	\$124/\$129
28005-A1	Experienced Ballet	2nd-4th	5:45-6:30pm	\$168/\$173
28006-A1	Experienced Tap	2nd-4th	6:30-7:00pm	\$124/\$129
28011-A1	Dance Squad	2nd-4th	7:00-7:30pm	\$124/\$129

Tuesday, Sept.13-Dec.13. ~ Skip (10/11, 11/1, 11/22, 12/6)

ACTV#	DANCE TITLE	GRADE	TIME	R/NR
28012-A1	Hip Hop Jazz	3rd-5th	5:00-5:45pm	\$168/\$173
28013-A1	Hip Hop Jazz	6th-8th	5:45-6:30pm	\$168/\$173

Friday, Sept.16-Dec. 9 ~ Skip (11/4, 11/11 11/25)

ACTV#	DANCE TITLE	GRADE	TIME	R/NR
28022-A1	Beginner Ballet	Ages 4.5-K	4:10-4:40pm	\$124/\$129
28021-A1	Beginner Tap	Ages 4.5-K	4:40-5:10pm	\$124/\$129
28023-A1	Experienced Ballet	1st-2nd	5:15-5:45pm	\$124/\$129
28024-A1	Experienced Tap	1st-3rd	5:45-6:15pm	\$124/\$129
20371-A1	Beginner Pointe	5th-8th	6:15-6:45pm	\$124/\$129
28026-A1	Experienced Ballet	4th-8th	6:45-7:15pm	\$124/\$129
28025-A1	Experienced Tap	4th-8th	7:15-7:45pm	\$124/\$129



- Pre-Ballet: An introduction to basic steps and positions. Students will learn a fun song and dance routine.
- Ballet: An excellent background for all dance and sport activities. Poise and grace are enhanced through the technique and structure of a ballet class.
- Tap: Shuffle in for a faster paced class; improve rhythm while enjoying this all-time favorite dance style.
- Jazz: Fast action steps and new dance moves will be incorporated into a great routine to popular music. Move to the groove for a terrific workout.
- Lyrical: A blend of Ballet and Jazz. The dancer uses movement and emotion to interpret the music.
- Dance Squad: In this energetic class we will learn skills that the school dance teams use. Dancing with props, beginning jazz steps, formations, kicks, and leaps will be introduced in the class.



GYMNASTICS & CHEERLEADING

FlipStar Gymnastics Academy

Ages 2-6

Location:

1906 Ferro Drive, New Lenox, IL 60451

We have partnered with FlipStar to offer gymnastics classes! Their coaching staff is dedicated to teaching your child gymnastics and social skills in a fun, safe and positive learning environment. The recommended program attire for girls includes a leotard with any long hair tied back. For boys, a T-shirt and shorts are recommended. No gym shoes, jeans, jewelry, or tights.

Parent Tot

Ages 2-3½



This is an interactive class between parent and child, where the child will develop physically and socially. During the class, parents will assist the child as they work through a circuit of gymnastic skills on equipment designed for their tiny bodies. Warm-up activities, balance, climbing, swinging and jumping are a few of the activities your little one will enjoy.

Activity	Day	Date	Time	R/NR
27360-A1	TU	9/6-10/25	9:00-9:45am	\$120/\$125
27360-A2	TU	11/1-12/27	9:00-9:45am	\$120/\$125

Preschool Gym

Ages 3½-5



The structure of this class will expose young gymnasts to basic gymnastics skills while building confidence, independence and learning skills. For most young gymnasts, this is their first experience without supervision. The one-hour class will follow a circuit format while learning skills such as rolls, cartwheels, strength and flexibility. Coaches are patient and correct with positive reinforcement.

Activity	Day	Date	Time	R/NR
27361-A1	W	9/7-10/26	9:00-9:55am	\$145/\$150
27361-A2	W	11/2-12/28	9:00-9:55am	\$145/\$150



Kinder Gym

Ages 5-6



The class will expose young gymnasts to basic gymnastic skills while building confidence, independence and learning skills in a faster paced environment than the preschool gymnastics. The 55-minute class will follow a circuit format while learning skills such as rolls, cartwheels, backbends, pullovers, round offs, strength, and flexibility. Coaches are patient and will correct with positive reinforcement.

Activity	Day	Date	Time	R/NR
27362-A1	M	9/12-10/31	9:00-9:55am	\$145/\$150
27362-A2	M	11/7-12/26	9:00-9:55am	\$145/\$150



Ignite Cheer

Ages 4-14

LCC (Room 1) Entry C



Our cheer classes are a fantastic way to introduce your athlete to the sport of cheerleading. Athletes will learn level appropriate skills including but not limited to cheers, dance, jumps, motions, and beginner stunts. Classes are held in two sessions: Fall sessions run September-December and Spring sessions run January-April. Each 14-week session will end with an in-house competition between all our locations. In our 55-minute classes held once a week, coaches follow a detailed lesson plan to ensure that each student is learning while having fun. During the last class of the session, students will highlight everything they learned. The Ignite In-House Recreational Competition is OPTIONAL. If your athlete chooses to compete, there is a \$55 competition fee and a \$160 uniform fee. Uniforms remain the same until your athlete grows out of them (normally last up to two years). To participate, you need to also register with Ignite at ignitecheerleading.com. You will then receive a waiver and parent handbook which explains in detail payment for uniform and practice expectations. Registration is now being taken.

Ages 4-6

Activity	Day	Date	Time	R/NR	Skip Date
24590-A1	M	9/12-11/28	6:00-6:55pm	\$170/\$175	10/31
		*12/5-12/12	5:30-6:55pm		

Ages 7-14

Activity	Day	Date	Time	R/NR	Skip Date
24590-A2	M	9/12-11/28	7:00-7:55pm	\$170/\$175	10/31
		*12/5-12/12	7:00-8:25pm		

***12/5 class will be in Bi-Centennial Room"**



Drop-In Open Gym

Ages 12-17

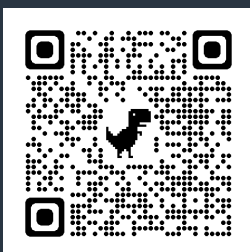
Lincoln-Way West High School Field House

Get your friends together and enjoy a fun night with an open court! Pay at the door. To participate, patrons from ages 12-17 must submit a signed Parent Permission Slip. Patrons 18 and older must follow drop-in procedures and show a valid picture ID. The Parent Permission Slip can be filled out and turned in at the Field House Front Desk during Park District operating hours.

Activity	Day	Date	Time	LWR/NR
25531-A1	F	9/9-12/16	6:00-9:00pm	\$10/\$15 per night

Skip Day Information

- Scan the code for the Lincoln-Way Field House and Fitness Center monthly schedules.
- The Field House hours may end earlier due to lack of attendance.
- Due to circumstances beyond our control, additional skip days may be added. These dates will be posted as we are notified.



Board Game Bash

Ages 11-13

LCC (Room 1) Entry C

Let us pull out the board games and have a game night with friends! We will have music, snacks, and plenty of board games to choose from. Bring out a friend or two and join in on the fun!

Activity	Day	Date	Time	R/NR
26502-A1	F	11/11	7:00-9:30pm	\$10

Elf Olympics

Ages 10-13

LCC (Room 1) Entry C



Grab your friends, Elf Olympics is a team of three event. Your team will have to complete a variety of themed challenges throughout the night. Trophies will be awarded to the top team. Snacks and refreshments will be served. A legal guardian for each team member must fill out and submit a Park District registration form at time of registration.

Activity	Day	Date	Time	R/NR
20571-A1	F	12/2	6:00-8:30pm	\$15/person

GGLeagues: ESPORTS Fall Season

Ages 8 & Older



GGLeagues is an ESPORTS, video game platform that provides fun and safe competitions and educational opportunities for parents and gamers of all ages. Compete and enjoy your favorite games including, Madden, Rocket League, Fortnite, Super Smash Bros and Mario Kart 8 Deluxe. Gamers will participate in leagues and tournaments throughout the state. To participate, players must have their own gaming console, the respective video game and online capabilities. Purchasing a season pass will unlock all the games offered in the Fall season.

[Click Here](#) to register for the GG Leagues Fall Season.

Registration deadline is Wednesday, September 28.

Youth Division

Ages 8-12

Date	Time	R/NR
10/3-11/14	7:00-8:00pm	\$40 per person*

Teen Division

Ages 13-17

Date	Time	R/NR
10/3-11/14	8:00-9:00pm	\$40 per person*

Adult 8 on 8 Flag Football Turkey Tournament Sat., November 5 Fieldstone Park



For more information
see page 16



Royal Tea Party

Age 4 and Older

LCC (Room 1) Entry C



You are cordially invited to join royalty for an afternoon family Tea Party. Princes and Princesses from across the land will be welcomed to join us for afternoon tea! Dress in your best and enjoy a light tea luncheon.

Registration deadline is Wednesday, August 31.

Activity	Day	Date	Time	R/NR
27385-A1	SA	9/10	Noon-2:00pm	\$20 per person



Friends of the Park "Empty Bowls"

All Ages

New Lenox Village Commons

Our annual event will be held during the Village of New Lenox's "Last Call Before Fall." Come pick your favorite hand-painted bowl and receive unlimited soup tastings (while supplies last) from local restaurants. Visit nlfop.square.site to purchase tickets in advance! Net proceeds will benefit the New Lenox Township Food Pantry

Day	Date	Time	R/NR
SA	9/17	2:00-6:00pm	\$15, Day of the Event

Big Bad Pumpkin Party

All Ages (An adult must stay)

Walker Country Estates Park



Everyone is invited to join us for our Big Bad Pumpkin Party! We will host a wide variety of children's activities including a costume contest and hayrack rides. The costume contest will be open for two age groups: 2-6 years and 7-12 years. Last hayrack ride will begin at 11:45am, NO exceptions!

Day	Date	Time
SU	10/2	10:00am-Noon

Community Backyard Bash

All Ages (An adult must stay)

Haines Wayside Park



Are you new to the area or a long-time resident? Either way it does not matter, this will be a wonderful opportunity for you to meet new families! We will listen to music, play a variety of backyard games, and enjoy the evening in one of our favorite parks. A light dinner and refreshments will be served.

Although, this event is FREE, we still require you to register.

Registration deadline is Friday, September 16.

Activity	Day	Date	Time
27221-A1	F	9/23	6:00-8:00pm



Monster Mash Bash

Ages 5-7

LCC (Room 2) Entry C



Put on your favorite Halloween costume and strut on down to the Park District! We will play candy corn bingo, monster freeze tag, and a variety of other Halloween-themed games. A pizza dinner will be provided. Kids will receive a treat bag to enjoy on the way home.

Registration deadline is Friday, October 7.

Activity	Day	Date	Time	R/NR
24122-A1	SA	10/22	4:30-6:30pm	\$21

Daddy/Daughter Date Night

Age 3 and Older

LCC (Room 1 & 2) Entry C

Lights! Camera! Action! You are invited to join us for our Hollywood/Red Carpet themed daddy daughter date night. Be sure to come dressed in your best Hollywood attire and prepare to dance the night away! We will have music, a light dinner and lots of fun! At time of registration, you will only register your daughter(s), we know Daddy will be in attendance.

Registration deadline is Friday, October 21.

Additional participants will be \$20 R/NR.

Activity	Day	Date	Time	R/NR
27383-A1	F	11/4	6:00-8:00pm	\$48 per pair

SPECIAL EVENTS



Gobbler Gauntlet 5K

Age 7 & Older
Sanctuary Golf Course

Dash your way to the finish line. The terrain of the race/walk is mostly flat with a few rolling hills. The route will have a water station and an electronically timed finish line. All participants will receive one complimentary drink in the clubhouse upon finishing the race. Medals will be

awarded to the 1st and 2nd place finishers in each age category such as top male and female finishers as well as male and female winners from New Lenox. Net proceeds will benefit the NLCPD Scholarship Program.

If registered by Monday, October 31, participants are guaranteed a race shirt. Race Day Walk-up registration begins at 7:00am.

Activity	Day	Date	Time	R/NR
27203-A1	SA	11/19	8:00am	\$35, Mail/Fax/Walk-in by 11/15 \$35, Online until 5:00pm, 11/18 \$40, Race Day Walk-up

Elf Olympics

Ages 10-13

LCC (Room 1) Entry C



Grab your friends, Elf Olympics is a team of three event. Your team will have to complete a variety of themed challenges throughout the night. Trophies will be awarded to the top team. Snacks and refreshments will be served. A legal guardian for each team member must fill out and submit a Park District registration form at time of registration.

Activity	Day	Date	Time	R/NR
20571-A1	F	12/2	6:00-8:30pm	\$15/person

Jingle Mingle

Ages 5-7

LCC (Room 1) Entry C



Hey kids, come Jingle your way to the Park District and Mingle with friends. We will have a variety of holiday activities, games, and a candy cane hunt. A pizza dinner will be provided.

Registration deadline is Monday, November 28.

Activity	Day	Date	Time	R/NR
27671-A1	F	12/16	6:00-7:30pm	\$23

Family Fun Day at Nova

Ages 7 & Older

Giddy up cowboys and cowgirls! Come spend a fantastic family afternoon "horsin' around" at Nova Quarter Horses, Inc. Your family will bond with the horses by learning to groom, saddle, and have a riding lesson. Lunch will be served. All skill levels welcome. Jeans and hard soled shoes required.

Activity	Day	Date	Time	R/NR
27256-A5	SU	11/6	12:00-2:00pm	\$130 per pair/\$135 per pair \$60/\$65 add'l rider

Location:

Nova Quarter Horses, Inc.
10129 W. 187th Street, Mokena

Holiday Events



Holiday Ladies Night Out at Nova

Adult

Calling all ladies! Gather your friends, relatives or co-workers for an evening of fun! Don't miss out on a fun filled evening of appetizers and beverages and best of all, horses!! Whether you are a novice or an experienced rider the activities are designed so that all can participate in the fun regardless of riding experience. So, grab a friend or two and come make memories at Nova Quarter Horses, Inc. Jeans and hard sole shoes are required.

Activity	Day	Date	Time	R/NR
27256-A1	SA	12/10	6:00-8:00pm	\$90/\$95

Location:

Nova Quarter Horses, Inc.
10129 W. 187th Street, Mokena

Noon Year's Eve Party

All Ages

New Lenox Village Commons, Ice Rink



Can't make it until midnight? Celebrate the "Noon Year" instead! Join the free party and help us countdown to noon. Music, crafts, and activities will be provided. We cap off the event with a massive balloon drop. Skate rentals and concessions will be available.

Day	Date	Time
TH	12/29	11:00am-12:30pm



POOL & ATHLETIC PARTIES



Pool Party Rentals

All Ages (Must be 21 to rent)

Lincoln-Way Central High School Aquatic Center

We offer pool party rentals at Lincoln-Way Central High School's Aquatic Center to celebrate your next occasion. A choice must be made for either the shallow end or the deep end of the pool or both for an additional fee. The upper level (balcony area) may also be rented for one hour. For available dates and to schedule your party, please call the Administration Building at (815) 485-3584.

Saturday

2:30-3:30pm

3:30-4:30pm

4:30-5:30pm

5:30-6:30pm

Sunday

11:00am-Noon

Noon-1:00pm

1:00-2:00pm

2:00-3:00pm

Athletic Birthday Parties

All Ages (Must be 21 to rent)

Lincoln-Way Central High School Field House

We offer Field House court rentals at Lincoln-Way Central to host your next event. Some equipment available for parties includes basketball, floor hockey, T-ball, soccer and more. Space is available on Fridays between 6:00-9:00pm and Saturdays between 1:00-4:00pm. Party area (lobby) for eating and opening presents is available for an additional charge. For available dates and to schedule your party, please call the Administration Building at (815) 485-3584.

Day Time

F 6:00-9:00pm

SA 1:00-4:00pm

Fee:

\$70/LWR • \$80/NR per hour of Gym space

\$35/LWR • \$40/NR per hour to utilize Lobby space

Court Rental

All Ages (Must be 21 to rent)



Looking to get an extra practice for your team or reserve an entire court for a group of friends? Courts are available at the Field House of Lincoln-Way West and Lincoln-Way Central. For available dates and to schedule your rental, please call the Administration Building at (815) 485-3584.

Activity	Day	Time	LWR/NR
27140-A1	M, W-F	6:00-9:00pm	\$50/\$70 per hour
	SA	1:00-4:00pm	
	SU	Noon-4:00pm	

Fee:

\$333/LWR • \$338/NR per hour

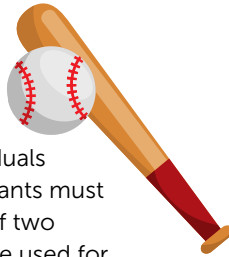
(Fee includes lifeguards and LW rental fee)

\$39/LWR • \$44/NR per hour for balcony rental

Batting Cage Rental

All Ages (Must be 21 to rent)

Lincoln-Way Central High School Field House



The batting cages are open to the public for individuals and teams to work on hitting and pitching. Participants must provide their own equipment for the rental. Limit of two batters in cage at a time. The adjacent court may be used for throwing and catching ONLY. For available dates and to schedule your rental, please call the Administration Building at (815) 485-3584.

Activity	Day	Time	LWR/NR
27140-A1	M/W/TH	6:00-9:00pm	\$50/\$70 per hour

New Lenox Community Park District Presents

*The Ice Skating Rink at
Christmas in the Commons*

December 3- January 2





Catering for any Occasion!

Enjoy these caterers at your next event at New Lenox Community Park District.

Cutting Edge Catering has formed a team of uniquely talented and creative professionals. They provide guests with superior quality foods, flawless presentations and service by people who care.

Visit cuttingedgecatering.com for more information.

Joey's Red Hots in New Lenox, Illinois, serves the highest quality Vienna beef and some of your favorite Chicago sandwiches. We also offer pizza, amazing chicken and even a taco bar! You can also request one of our Food Trucks at your event! Great Food! Great Service! Great Prices!

Visit joeysredhots.com for more information.

We do not show our rental facilities if the room is currently occupied. Therefore, we suggest you call ahead prior to requesting to view the facilities. To connect to our WiFi network at the Administration Building and Lions Community Center, choose the network named 'NLCPDpub' and use the password 'WPA#public842'.

ROOM RENTALS

Rentals are available to both New Lenox residents and nonresidents. Participants can bring their own food and beverages. However, alcohol is not permitted.

- Room 1: Holds up to 130 people (\$100/hour)
- Room 2: Holds up to 50 people (\$80/hour)
- Rooms 1 & 2: Holds 180 people w/o dance area (\$125/hour)
- Bi-Centennial Room: Holds up to 50 people (\$80/hour)
- All-Purpose Room: Holds up to 60 people (\$100/hour)

A \$250 security deposit is required to reserve your date. Each room rental is required to pay a set-up and tear-down fee of \$30. (If renting LCC Rooms 1 & 2, the fee will be \$55.)

Nonresident Fee: Additional \$50 will be added to the total cost of the Room Rental.

BANQUET RENTALS

Beverages and alcohol must be provided by our own bar. To have the bar, the banquet will need to have a minimum of 50 guests. Rentals must be made 14 days in advance and a \$250 security deposit is required to reserve your date. Full payment and layout are due 14 days prior to event. We offer six banquet packages for you to choose from and a choice from two of the area's finest caterers for your banquet. You may choose your own caterer for an additional fee of \$50.

Package No.	Duration	Package Includes
1	4 hrs*	<ul style="list-style-type: none"> • \$100/hr Banquet Hall Rental • Minimum of 50 guests • Cash Bar (\$250 minimum)
2	4 hrs*	<ul style="list-style-type: none"> • \$100/hr Banquet Hall Rental • Minimum of 50 guests • \$5/person pop only • Cash Bar (\$250 minimum)
3	4 hrs*	<ul style="list-style-type: none"> • \$100/hr Banquet Hall Rental • Minimum of 50 guests • Cash Bar (\$250 minimum) (Tab paid at conclusion of event)
4	5 hrs	<ul style="list-style-type: none"> • \$16/person (Age 5 & under free) • Minimum of 100 guests (Ages 5 and under not included in min.) • Beer, wine and pop • Cash Bar for mixed drinks • Bar closes for an hour during dinner
5	5 hrs	<ul style="list-style-type: none"> • \$24/person (Age 5 & under free) • Minimum of 100 guests (Age 5 and under not included in min.) • Full Bar • Bar Closes for an hour during dinner
6 (Room 2 Only)	3 hrs min	<ul style="list-style-type: none"> • \$75/hr Banquet Hall Rental • Maximum of 50 guests • Cash Bar (\$150 min.) or Customized Bar Tab



Are you looking for a wonderful and affordable way to host your next outdoor celebration?

The New Lenox Community Park District offers shelter rentals at several park sites, all of which are developed with playground equipment! Residents and nonresidents can rent the Park Shelters shown below.

Rentals for 2022 Began on Tuesday, January 4, 2022.

Park Shelter Rental costs include use of electric and shelter rental. Please remember that these are public parks and open space will remain open to the public. In order to be approved to bring in an inflatable (no water inflatables allowed; for a full list of prohibited items please visit newlenoxparks.org) onto Park District property; you MUST supply a Certificate of Insurance (COI) by Operating Vendor with a \$1,000,000.00 policy; naming the New Lenox Community Park District as additional insured with 701 W. Haven Avenue, New Lenox, IL 60451 as the address and include a copy of the vendor's permit to conduct business. Once the COI and Business Permit is received the renter will be allowed to have the inflatable on Park District property; this MUST be supplied prior to your event. These documents may be mailed to the Park District address above or faxed to (815) 485-3589 with ATTN: Park Rentals.

- Park Rentals are available from Apr. 15-Oct. 31
- Hours of Operation: 9:00am-8:00pm
- All parks are ADA accessible

*A security deposit of \$200 and rental fee is required for all Park Shelter Rentals at time of reservation.

Cancellation policy within the 14-day period prior to the rental date:

- 8-14 days prior: Security deposit is retained. The rest will be refunded within a period of 30 days.
- 7 days or less: Security deposit plus 50% of the rental fees will be retained. The other 50% will be refunded to the signee within a period of 30 days.

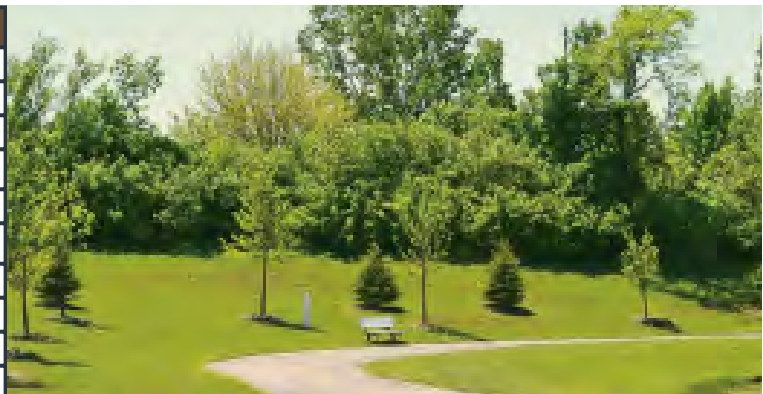
Park Shelters Available to Rent:

	Park Name	Location	Shelter size/Seating
	Cherry Hill (No alcohol or inflatables)	Washington Street & Kingston Drive	24 ft. x 36 ft. / Seating for 32
	Firefighters	1 Manor Drive	30 ft. x 60 ft. / Seating for 64
	Haines Wayside	Haines Avenue, West of Cedar Road	30 ft. x 60 ft. / Seating for 80
	Hibernia (No alcohol or inflatables)	Eagle Circle & Blarney Road	20 ft. x 20 ft. / Seating for 16
	Leigh Creek South (Available after June 5) (no alcohol or inflatables)	Heatherglen Drive	24 ft. x 36 ft. / Seating for 40
	Sharon's Bay	Bluestone Bay & Westwind Drive	24 ft. x 36 ft. / Seating for 40
	Stonebridge (After 2:00pm on weekends)	Nelson Road & Grandview Drive	30 ft. x 55 ft. / Seating for 48
	Wildflower	Cherry Hill Rd & Washington Street	20 ft. x 20 ft. / Seating for 16
Resident: \$175 • Nonresident: \$225			

*A refundable security deposit of \$200 and rental fee is required for all Park Shelter Rentals at time of reservation.

Park Trail Guide:

Site	Distance	#laps/1mile
Bristol Park	.51 miles	2
Countryview/Royal Meadows Park	.52 miles	2
Freedom Park	.31 miles	3.5
Hibernia Park	.57 miles	2
Leigh Creek South Park	.30 miles	3.5
Lions Den Park	.29 miles	3.5
Palmer Valley Park	.35 miles	3
Sharon's Bay/Crystal Springs Parks	.42 miles	2.5
Sky Harbor Park	.28 miles	4
Walker Country Estates Park	.26 miles	4



PARK & FACILITY LOCATIONS



1. AEROHAVEN PARK

Glenn Drive

2. BENTLEY/TYLER

ATHLETIC FIELDS

Illinois Highway, East of Cedar Rd.

3. BRISTOL PARK

Bristol Park Rd. & Brandon Hill Rd.

4. CHERRY HILL PARK

Washington & Kingston Drives

5. CHESTNUT POINTE PARK

Chestnut Pointe Drive

6. COUNTRYVIEW/ROYAL

MEADOWS PARK

Jackson Branch & Daniel Lewis Dr.

7. CRYSTAL SPRINGS PARK

Bluestone Bay Drive

8. FIELDSTONE PARK

Windcrest Lane; North of Haven Ave

9. FIREFIGHTERS PARK

Manor Drive

10. FITNESS COURT

Haven Ave. & Gear Dr.

11. FREEDOM PARK

Charleston and Liberty Drives

12. HAINES WAYSIDE PARK

Haines Ave; West of Cedar Road

14. HIBERNIA PARK

Eagle Circle and Blarney Road

15. HIGHLANDS PARK

Flagstaff Lane

16. JACOB LOWELL PARK

Illinois Highway; East of Cedar Road

17. LAUREL MEADOWS PARK

Ian Avenue

18. LEIGH CREEK SOUTH

Heatherglen Drive

19. LIONS DEN PARK

520 South Cedar Road

20. MARTINO JR. HIGH

ATHLETIC FIELDS

731 East Joliet Highway

21. NELSON CAMPUS PARK/FIELDS

Nelson and Laraway Roads

22. NEUFARFIELD PARK

Neufairfield Drive & Hollywood Lane

23. PALMER VALLEY PARK

Delaney and Martin Lane

24. PRAIRIE RIDGE PARK

Prairie Ridge Way & Pond View St.

25. RON ROB ATHLETIC FIELDS

Country Creek Drive

26. R.S. CORCORAN PARK/ VETS FIELD

Vine Street; North of Route 30

27. SANCTUARY GOLF COURSE

485 North Marley Road

28. SCHOOLHOUSE MANOR PARK

Cornell Drive; South of Route 30

29. SHARON'S BAY PARK

Bluestone Bay & Westwind Drives

30. SKY HARBOR PARK

2360 Alta Vista Drive

31. SPENCER CAMPUS

ATHLETIC FIELDS

Spencer Rd.; North of Laraway Rd.

32. SPENCER PARK

Illinois Hwy. & South Spencer Rd.

33. STONEBRIDGE PARK

Nelson and Grandview Drives

34. TAYLOR GLEN PARK

Taylor Glen Drive & Northern Lights Way

35. THUNDER RIDGE PARK

Apache Drive

36. WALONA PARK

Joliet Highway & Walona Avenue

37. WALKER COUNTRY ESTATES PARK

Lenox Street & Cooper Road

38. WATERCHASE PARK

Water Chase Drive & Viewside Drive

39. WILDFLOWER PARK

Washington & Cherry Hill Road

40. WILDWOOD PARK

Gear Drive & West Joliet Hwy.

41. WINDERMERE TOT LOT

Anderson & Chelsea Drives

A. Lions Community Center

B. Administration Building

C. Maintenance Facility

D. Lincoln-Way Central H.S.

E. Lincoln-Way West H.S.

F. Bentley-Tyler Schools

G. Cherry Hill School

H. Haines School

I. Liberty Jr. High School

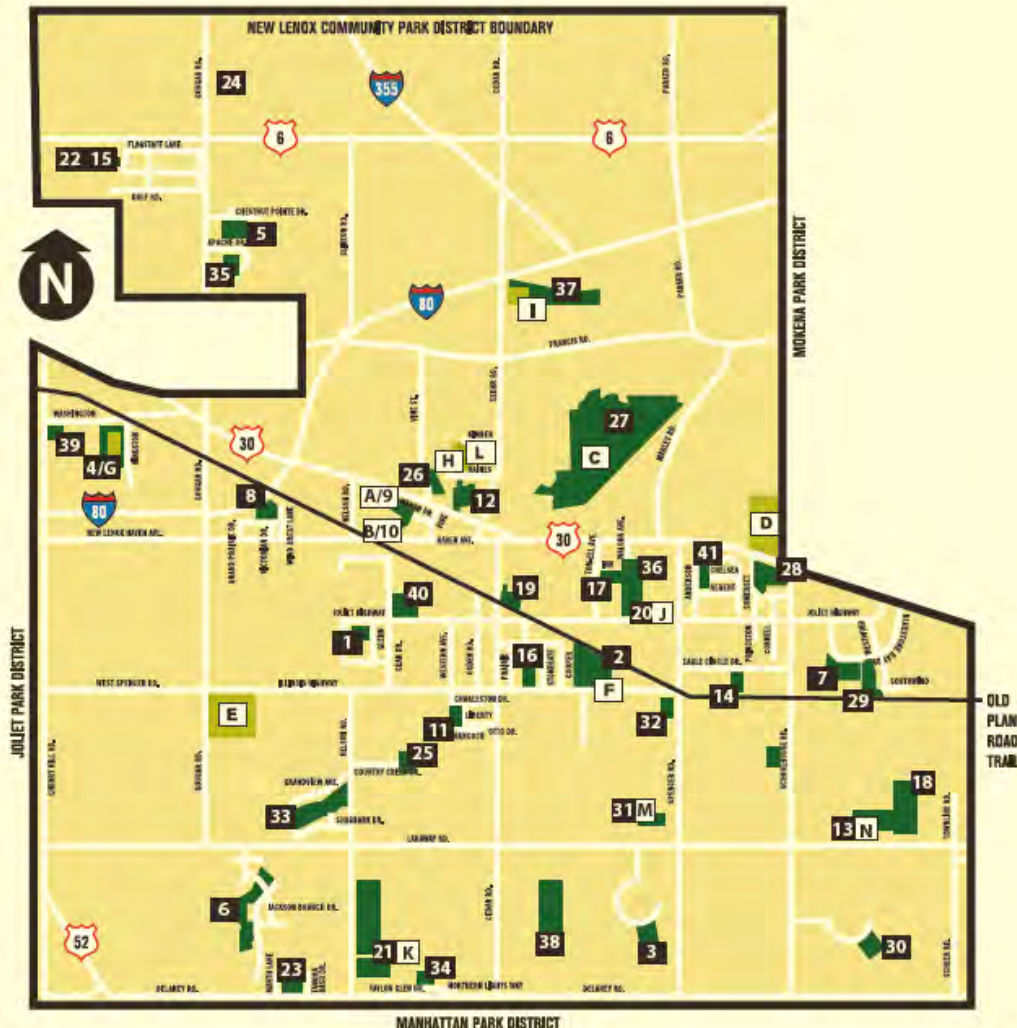
J. Martino Jr. High School

K. Nelson Campus

L. Oster-Oakview School

M. Spencer Campus

N. Lincolnway Special Recreation Association



PARK & FACILITY AMENITIES		ACRES	SPECIAL REC. CTR./PARK	BASEBALL	SOFTBALL	BASKETBALL COURTS	CONSERVATION AREA	FISHING	FITNESS EQUIPMENT	FOOTBALL FIELDS	DISC GOLF	TURF COURT GAMES	ICE SKATING/SLEDDING	PARKING LOT	SHELTER	PLAYGROUND EQUIP.	WATER PLAY	SOCCER	VOLLEYBALL	WALKING PATHS	TENNIS / PICKLEBALL	SKATEBOARDING	UNDEVELOPED
1	AEROHAVEN PARK	2.8														•							
2	BENTLEY/TYLER ATHLETIC FIELDS	30		•										•	•								
3	BRISTOL PARK	15.5																		•			
4	CHERRY HILL PARK	5												•	•	•		•					
5	CHESTNUT POINTE PARK	1.1													•	•							
6	COUNTRYVIEW/ROYAL MEADOWS PK.	16.6					•							•	•	•				•	•	•	
7	CRYSTAL SPRINGS PARK	36					•	•				•		•	•	•				•			
8	FIELDSTONE PARK	5														•							
9	FIREFIGHTERS PARK	7.3												•	•	•							
10	FITNESS COURT	.25							•														
11	FREEDOM PARK	7.7				•		•						•	•	•				•			
12	HAINES WAYSIDE PARK	10.75									•		•	•	•	•			•				
13	HEATHER GLEN PARK / LWSRA	5.5	•											•									
14	HIBERNIA PARK	13.4						•						•	•	•	•		•	•			
15	HIGHLANDS PARK	.5													•	•							
16	JACOB LOWELL PARK	6		•	•	•								•	•	•							
17	LAUREL MEADOWS PARK	1.9			•																		
18	LEIGH CREEK SOUTH PARK	3.6	•		•	•			•			•		•	•	•				•			
19	LIONS DEN PARK	10			•	•								•	•	•			•	•			
20	MARTINO JR. HIGH ATHLETIC FIELDS	11								•				•	•								
21	NELSON CAMPUS PARK/FIELDS	20.4				•		•						•	•	•		•					
22	NEUFARFIELD PARK	5									•				•	•							
23	PALMER VALLEY PARK	15.5			•	•		•						•	•	•				•			
24	PRAIRIE RIDGE PARK	2.5												•	•	•							
25	RON ROB ATHLETIC FIELDS	4.6			•									•									
26	R.S. CORCORAN PARK/VETS FIELD	4			•									•	•	•							
27	SANCTUARY GOLF COURSE	235					•							•	•								
28	SCHOOLHOUSE MANOR PARK	10					•						•	•	•	•				•			
29	SHARON'S BAY PARK	12.7			•		•	•						•	•	•			•	•			
30	SKY HARBOR PARK	4							•			•		•	•	•				•	•		
31	SPENCER CAMPUS ATHLETIC FIELDS	35						•						•		•		•					
32	SPENCER PARK	2				•								•	•	•							
33	STONEBRIDGE PARK	18.5			•									•	•	•		•					
34	TAYLOR GLEN PARK	3														•							
35	THUNDER RIDGE PARK	.7													•	•							
36	WALONA PARK	7			•									•	•	•							
37	WALKER COUNTRY ESTATES PARK	12.9				•		•	•	•				•	•	•	•			•			
38	WATERCHASE PARK	3																					•
39	WILDFLOWER PARK	4.4												•	•	•			•	•			
40	WILDWOOD PARK	4				•								•	•	•			•				
41	WINDERMERE TOT LOT	.75				•										•							



Gobbler Gauntlet 5k

Saturday, November 19

8:00am

Sanctuary Golf Course

Register Today !



Park District Youth License Plate Program

The sale and subsequent renewals of each plate generate \$25 for the PowerPlay! Beyond School Grant Program, which funds youth programs in park and recreation agencies throughout Illinois. The goal of the PowerPlay! program is to increase the number of opportunities designed to show youth the lifelong benefits of fitness, health and nutrition.

For more information contact the Illinois Association of Park Districts (IAPD) at 217-523-4554 or iapd@ILparks.org.